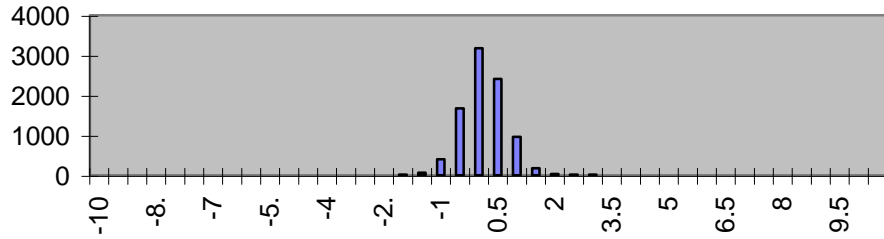
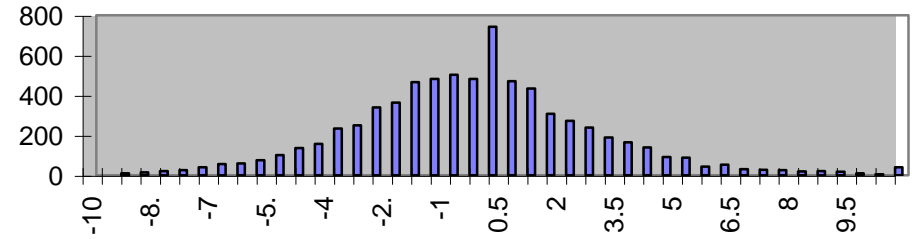


Helix NH



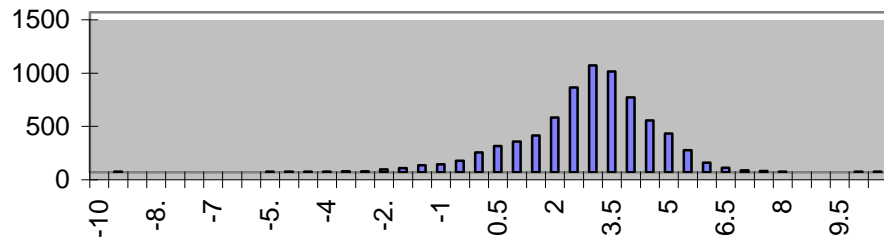
NH ss (ppm)
mean: -0.12 +/- 0.83

Helix N



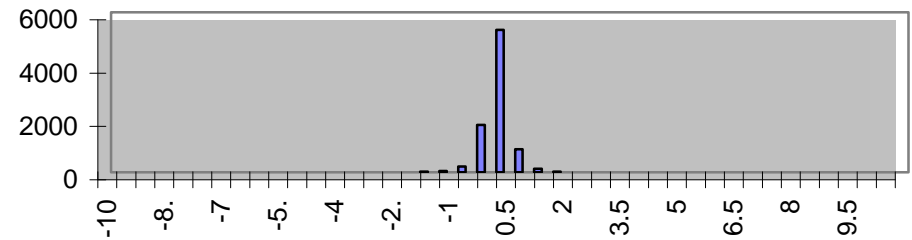
N ss (ppm)
mean: -0.77 +/- 3.16

Helix Ca



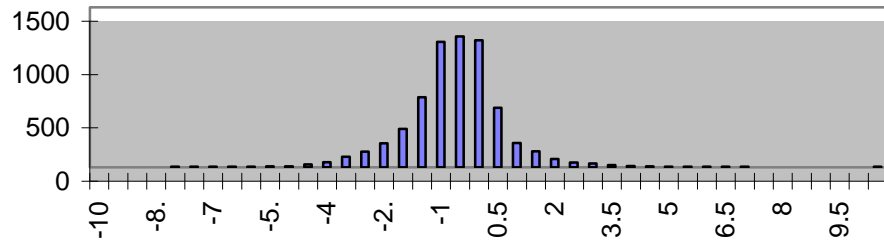
Ca ss (ppm)
mean: 2.68 +/- 1.7

Helix Ha



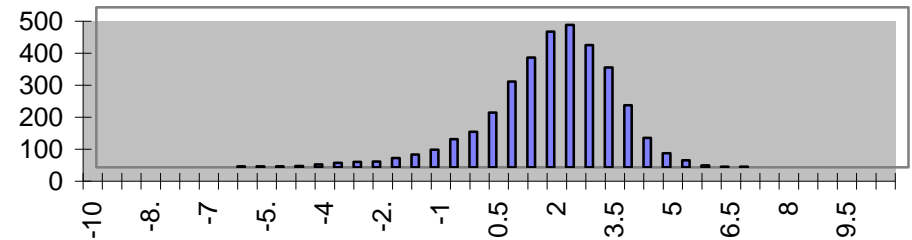
Ha ss (ppm)
mean: -0.34 +/- 0.36

Helix Cb



Cb ss (ppm)
mean: -0.87 +/- 1.41

Helix CO



CO ss (ppm)
mean: 1.33 +/- 1.66