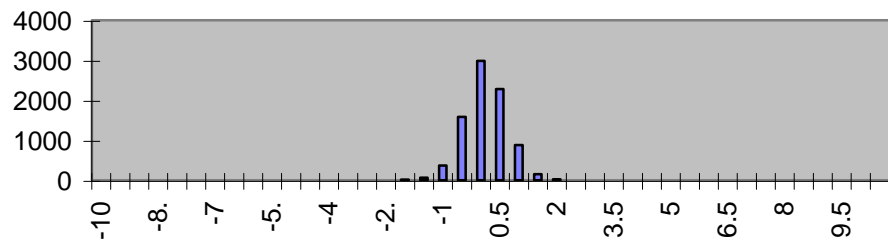


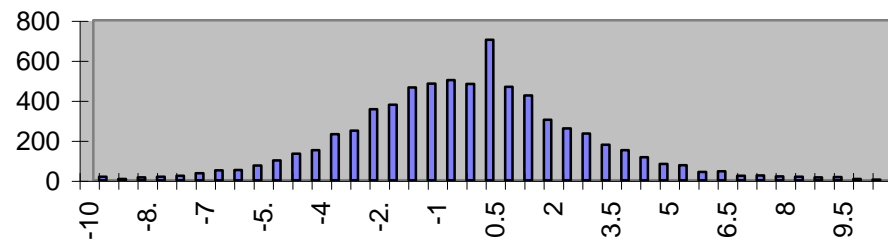
Alpha Helix NH



NH ss (ppm)

mean: -0.11 +/- 0.83

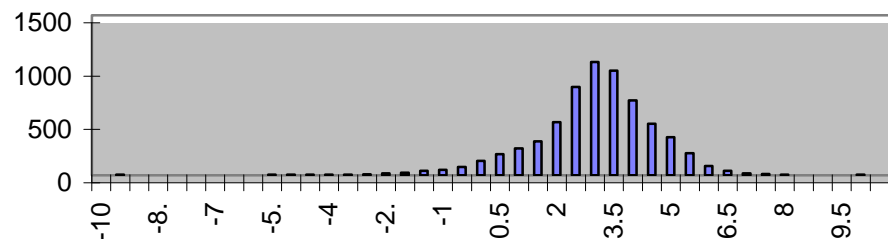
Alpha Helix N



N ss (ppm)

mean: -0.75 +/- 3.08

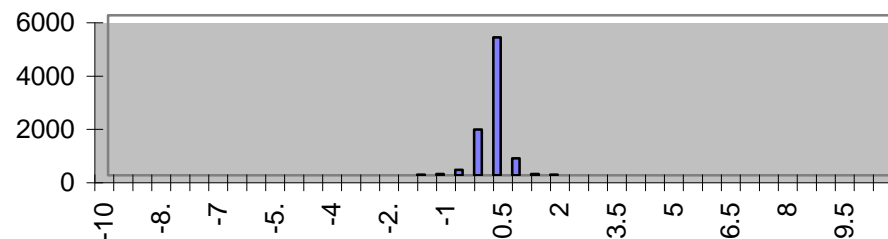
Alpha Helix Ca



Ca ss (ppm)

mean: 2.76 +/- 1.65

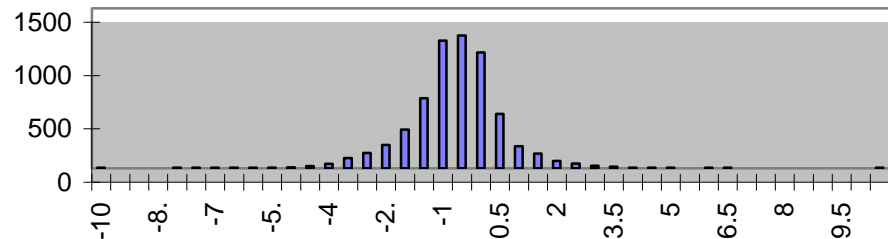
Alpha Helix Ha



Ha ss (ppm)

mean: -0.35 +/- 0.35

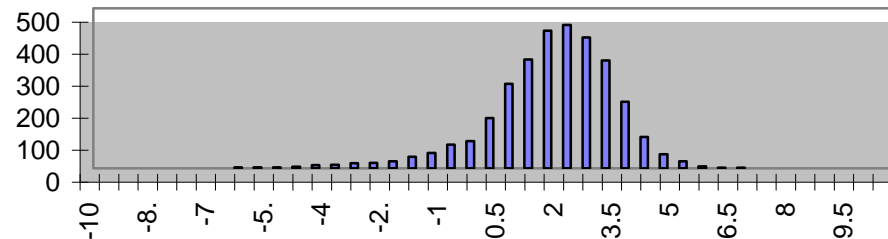
Alpha Helix Cb



Cb ss (ppm)

mean: -0.87 +/- 1.36

Alpha Helix CO



CO ss (ppm)

mean: 1.39 +/- 1.64