



Full wwPDB X-ray Structure Validation Report ⓘ

Apr 28, 2024 – 12:04 pm BST

PDB ID : 2V1U
Title : STRUCTURE OF THE AEROPYRUM PERNIX ORC1 PROTEIN IN COMPLEX WITH DNA
Authors : Gaudier, M.; Schuwirth, B.S.; Westcott, S.L.; Wigley, D.B.
Deposited on : 2007-05-30
Resolution : 3.10 Å(reported)

This is a Full wwPDB X-ray Structure Validation Report for a publicly released PDB entry.

We welcome your comments at validation@mail.wwpdb.org

A user guide is available at

<https://www.wwpdb.org/validation/2017/XrayValidationReportHelp>

with specific help available everywhere you see the ⓘ symbol.

The types of validation reports are described at

<http://www.wwpdb.org/validation/2017/FAQs#types>.

The following versions of software and data (see [references ⓘ](#)) were used in the production of this report:

MolProbity	:	4.02b-467
Mogul	:	1.8.4, CSD as541be (2020)
Xtriage (Phenix)	:	1.13
EDS	:	2.36.2
buster-report	:	1.1.7 (2018)
Percentile statistics	:	20191225.v01 (using entries in the PDB archive December 25th 2019)
Refmac	:	5.8.0158
CCP4	:	7.0.044 (Gargrove)
Ideal geometry (proteins)	:	Engh & Huber (2001)
Ideal geometry (DNA, RNA)	:	Parkinson et al. (1996)
Validation Pipeline (wwPDB-VP)	:	2.36.2

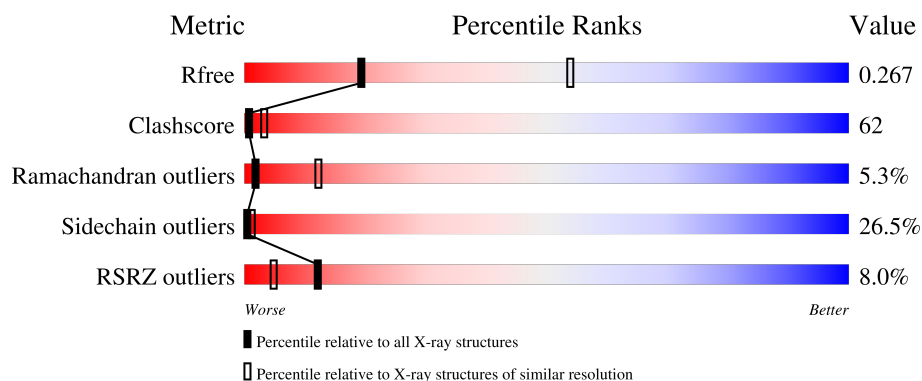
1 Overall quality at a glance

The following experimental techniques were used to determine the structure:

X-RAY DIFFRACTION

The reported resolution of this entry is 3.10 Å.

Percentile scores (ranging between 0-100) for global validation metrics of the entry are shown in the following graphic. The table shows the number of entries on which the scores are based.



Metric	Whole archive (#Entries)	Similar resolution (#Entries, resolution range(Å))
R_{free}	130704	1094 (3.10-3.10)
Clashscore	141614	1184 (3.10-3.10)
Ramachandran outliers	138981	1141 (3.10-3.10)
Sidechain outliers	138945	1141 (3.10-3.10)
RSRZ outliers	127900	1067 (3.10-3.10)

The table below summarises the geometric issues observed across the polymeric chains and their fit to the electron density. The red, orange, yellow and green segments of the lower bar indicate the fraction of residues that contain outliers for ≥ 3 , 2, 1 and 0 types of geometric quality criteria respectively. A grey segment represents the fraction of residues that are not modelled. The numeric value for each fraction is indicated below the corresponding segment, with a dot representing fractions $\leq 5\%$. The upper red bar (where present) indicates the fraction of residues that have poor fit to the electron density. The numeric value is given above the bar.

Mol	Chain	Length	Quality of chain
1	A	387	<div> <div>6%</div> <div>27%</div> <div>49%</div> <div>20%</div> <div>..</div> </div>
2	B	22	<div> <div>27%</div> <div>27%</div> <div>55%</div> <div>18%</div> </div>
3	C	22	<div> <div>18%</div> <div>9%</div> <div>73%</div> <div>18%</div> </div>

2 Entry composition

There are 6 unique types of molecules in this entry. The entry contains 3951 atoms, of which 0 are hydrogens and 0 are deuteriums.

In the tables below, the ZeroOcc column contains the number of atoms modelled with zero occupancy, the AltConf column contains the number of residues with at least one atom in alternate conformation and the Trace column contains the number of residues modelled with at most 2 atoms.

- Molecule 1 is a protein called CELL DIVISION CONTROL PROTEIN 6 HOMOLOG.

Mol	Chain	Residues	Atoms					ZeroOcc	AltConf	Trace
1	A	382	Total	C	N	O	S	0	0	0
			3019	1906	561	548	4			

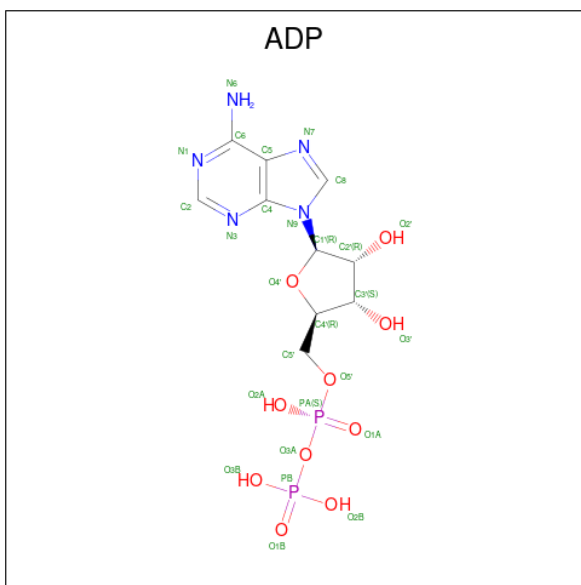
- Molecule 2 is a DNA chain called 5'-D(*TP*CP*TP*CP*CP*AP*CP*AP*GP*GP *AP*AP*AP*CP*GP*GP*AP*GP*GP*GP*GP*T)-3'.

Mol	Chain	Residues	Atoms					ZeroOcc	AltConf	Trace
2	B	22	Total	C	N	O	P	0	0	0
			454	215	91	127	21			

- Molecule 3 is a DNA chain called 5'-D(*AP*CP*CP*CP*CP*TP*CP*CP*GP*TP *TP*TP*CP*CP*TP*GP*TP*GP*GP*AP*GP*A)-3'.

Mol	Chain	Residues	Atoms					ZeroOcc	AltConf	Trace
3	C	22	Total	C	N	O	P	0	0	0
			442	212	76	133	21			

- Molecule 4 is ADENOSINE-5'-DIPHOSPHATE (three-letter code: ADP) (formula: C₁₀H₁₅N₅O₁₀P₂).



Mol	Chain	Residues	Atoms					ZeroOcc	AltConf
4	A	1	Total	C	N	O	P	0	0
			27	10	5	10	2		

- Molecule 5 is MAGNESIUM ION (three-letter code: MG) (formula: Mg).

Mol	Chain	Residues	Atoms	ZeroOcc	AltConf
5	A	1	Total Mg 1 1	0	0

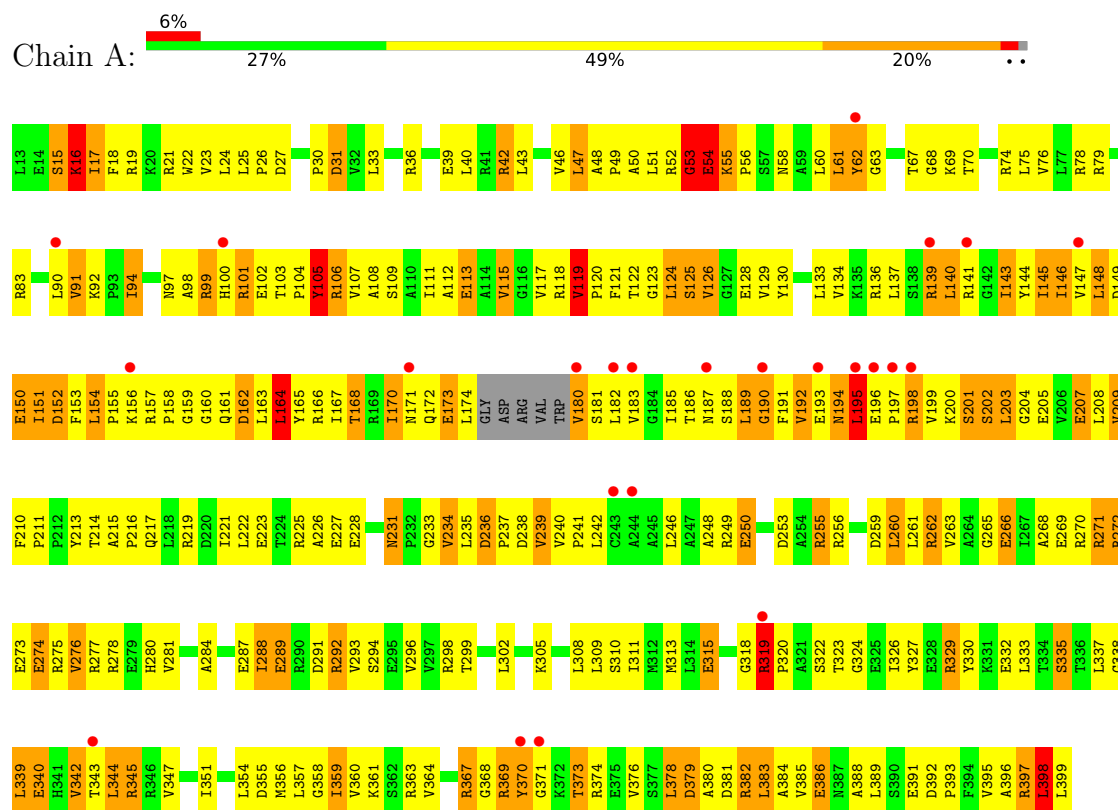
- Molecule 6 is water.

Mol	Chain	Residues	Atoms	ZeroOcc	AltConf
6	A	4	Total O 4 4	0	0
6	B	1	Total O 1 1	0	0
6	C	3	Total O 3 3	0	0

3 Residue-property plots [i](#)

These plots are drawn for all protein, RNA, DNA and oligosaccharide chains in the entry. The first graphic for a chain summarises the proportions of the various outlier classes displayed in the second graphic. The second graphic shows the sequence view annotated by issues in geometry and electron density. Residues are color-coded according to the number of geometric quality criteria for which they contain at least one outlier: green = 0, yellow = 1, orange = 2 and red = 3 or more. A red dot above a residue indicates a poor fit to the electron density ($RSRZ > 2$). Stretches of 2 or more consecutive residues without any outlier are shown as a green connector. Residues present in the sample, but not in the model, are shown in grey.

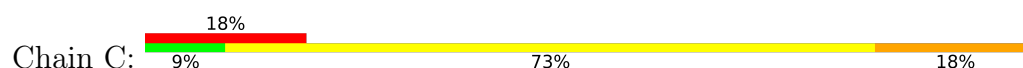
• Molecule 1: CELL DIVISION CONTROL PROTEIN 6 HOMOLOG



• Molecule 2: 5'-D(*TP*CP*TP*CP*CP*AP*CP*AP*GP*GP *AP*AP*AP*CP*GP*GP*AP*GP*GP*GP*GP*T)-3'



• Molecule 3: 5'-D(*AP*CP*CP*CP*CP*TP*CP*CP*GP*TP *TP*TP*CP*CP*TP*GP*TP*GP*GP*AP*GP*A)-3'





4 Data and refinement statistics

Property	Value	Source
Space group	P 65 2 2	Depositor
Cell constants a, b, c, α , β , γ	75.70Å 75.70Å 395.11Å 90.00° 90.00° 120.00°	Depositor
Resolution (Å)	15.00 – 3.10 24.44 – 3.10	Depositor EDS
% Data completeness (in resolution range)	99.7 (15.00-3.10) 99.5 (24.44-3.10)	Depositor EDS
R_{merge}	0.06	Depositor
R_{sym}	(Not available)	Depositor
$\langle I/\sigma(I) \rangle$ ¹	4.14 (at 3.11Å)	Xtriage
Refinement program	REFMAC 5.2.0019	Depositor
R, R_{free}	0.254 , 0.297 0.255 , 0.267	Depositor DCC
R_{free} test set	652 reflections (4.99%)	wwPDB-VP
Wilson B-factor (Å ²)	81.2	Xtriage
Anisotropy	0.687	Xtriage
Bulk solvent k_{sol} (e/Å ³), B_{sol} (Å ²)	0.36 , 125.1	EDS
L-test for twinning ²	$\langle L \rangle = 0.47$, $\langle L^2 \rangle = 0.30$	Xtriage
Estimated twinning fraction	No twinning to report.	Xtriage
F_o, F_c correlation	0.91	EDS
Total number of atoms	3951	wwPDB-VP
Average B, all atoms (Å ²)	111.0	wwPDB-VP

Xtriage's analysis on translational NCS is as follows: *The largest off-origin peak in the Patterson function is 4.60% of the height of the origin peak. No significant pseudotranslation is detected.*

¹Intensities estimated from amplitudes.

²Theoretical values of $\langle |L| \rangle$, $\langle L^2 \rangle$ for acentric reflections are 0.5, 0.333 respectively for untwinned datasets, and 0.375, 0.2 for perfectly twinned datasets.

5 Model quality

5.1 Standard geometry

Bond lengths and bond angles in the following residue types are not validated in this section: MG, ADP

The Z score for a bond length (or angle) is the number of standard deviations the observed value is removed from the expected value. A bond length (or angle) with $|Z| > 5$ is considered an outlier worth inspection. RMSZ is the root-mean-square of all Z scores of the bond lengths (or angles).

Mol	Chain	Bond lengths		Bond angles	
		RMSZ	# Z >5	RMSZ	# Z >5
1	A	0.26	0/3064	0.54	1/4145 (0.0%)
2	B	0.45	0/511	1.29	5/788 (0.6%)
3	C	0.45	0/493	1.29	8/758 (1.1%)
All	All	0.32	0/4068	0.82	14/5691 (0.2%)

Chiral center outliers are detected by calculating the chiral volume of a chiral center and verifying if the center is modelled as a planar moiety or with the opposite hand. A planarity outlier is detected by checking planarity of atoms in a peptide group, atoms in a mainchain group or atoms of a sidechain that are expected to be planar.

Mol	Chain	#Chirality outliers	#Planarity outliers
1	A	0	10

There are no bond length outliers.

All (14) bond angle outliers are listed below:

Mol	Chain	Res	Type	Atoms	Z	Observed(°)	Ideal(°)
2	B	17	DA	O4'-C1'-N9	8.31	113.82	108.00
3	C	10	DT	O4'-C1'-N1	8.03	113.62	108.00
2	B	9	DG	O4'-C1'-N9	6.78	112.75	108.00
3	C	15	DT	N3-C4-O4	6.45	123.77	119.90
3	C	10	DT	C1'-O4'-C4'	-6.42	103.68	110.10
2	B	9	DG	C1'-O4'-C4'	-6.03	104.07	110.10
1	A	16	LYS	C-N-CA	-5.93	106.87	121.70
3	C	17	DT	O4'-C1'-N1	5.92	112.15	108.00
3	C	15	DT	C5-C4-O4	-5.72	120.90	124.90
3	C	22	DA	O4'-C4'-C3'	-5.62	102.25	104.50
2	B	13	DA	O4'-C1'-N9	5.37	111.76	108.00
2	B	3	DT	N3-C4-O4	5.31	123.09	119.90
3	C	17	DT	N3-C4-O4	5.23	123.04	119.90

Continued on next page...

Continued from previous page...

Mol	Chain	Res	Type	Atoms	Z	Observed(°)	Ideal(°)
3	C	17	DT	C5-C4-O4	-5.23	121.24	124.90

There are no chirality outliers.

All (10) planarity outliers are listed below:

Mol	Chain	Res	Type	Group
1	A	101	ARG	Peptide
1	A	121	PHE	Peptide
1	A	123	GLY	Peptide
1	A	140	LEU	Peptide
1	A	15	SER	Peptide
1	A	194	ASN	Peptide
1	A	195	LEU	Peptide
1	A	52	ARG	Peptide
1	A	53	GLY	Peptide
1	A	54	GLU	Peptide

5.2 Too-close contacts [i](#)

In the following table, the Non-H and H(model) columns list the number of non-hydrogen atoms and hydrogen atoms in the chain respectively. The H(added) column lists the number of hydrogen atoms added and optimized by MolProbity. The Clashes column lists the number of clashes within the asymmetric unit, whereas Symm-Clashes lists symmetry-related clashes.

Mol	Chain	Non-H	H(model)	H(added)	Clashes	Symm-Clashes
1	A	3019	0	3151	436	0
2	B	454	0	247	29	0
3	C	442	0	250	34	0
4	A	27	0	12	8	0
5	A	1	0	0	0	0
6	A	4	0	0	0	0
6	B	1	0	0	0	0
6	C	3	0	0	0	0
All	All	3951	0	3660	474	0

The all-atom clashscore is defined as the number of clashes found per 1000 atoms (including hydrogen atoms). The all-atom clashscore for this structure is 62.

All (474) close contacts within the same asymmetric unit are listed below, sorted by their clash magnitude.

Atom-1	Atom-2	Interatomic distance (Å)	Clash overlap (Å)
1:A:195:LEU:CB	1:A:200:LYS:HG3	1.19	1.65
1:A:195:LEU:HB2	1:A:200:LYS:CG	1.17	1.60
1:A:195:LEU:CD1	1:A:200:LYS:HG2	1.47	1.45
1:A:49:PRO:O	1:A:53:GLY:HA3	1.24	1.37
1:A:105:TYR:CE1	1:A:124:LEU:HD22	1.64	1.31
1:A:157:ARG:HG3	1:A:158:PRO:CD	1.73	1.19
1:A:124:LEU:HD11	1:A:129:VAL:HG12	1.21	1.19
1:A:68:GLY:HA2	4:A:1400:ADP:O2A	1.42	1.17
1:A:152:ASP:OD1	1:A:186:THR:HB	1.46	1.14
1:A:152:ASP:OD1	1:A:186:THR:CB	1.97	1.12
1:A:157:ARG:CG	1:A:158:PRO:HD2	1.81	1.09
1:A:106:ARG:HG3	1:A:106:ARG:HH11	1.06	1.09
1:A:105:TYR:CD1	1:A:124:LEU:HD22	1.88	1.07
1:A:167:ILE:HA	1:A:170:ILE:HG12	1.36	1.07
1:A:16:LYS:HE3	1:A:274:GLU:HB3	1.16	1.07
1:A:124:LEU:CD1	1:A:129:VAL:HG12	1.84	1.07
1:A:111:ILE:CD1	1:A:146:ILE:HD12	1.85	1.07
1:A:16:LYS:HE2	1:A:274:GLU:HG2	1.37	1.06
1:A:63:GLY:O	1:A:187:ASN:HA	1.52	1.06
1:A:113:GLU:CD	1:A:119:VAL:HG12	1.74	1.06
1:A:61:LEU:HD23	1:A:208:LEU:CB	1.84	1.06
3:C:21:DG:C2'	3:C:22:DA:C8	2.40	1.05
1:A:61:LEU:HD23	1:A:208:LEU:HB3	1.39	1.04
1:A:130:TYR:OH	1:A:170:ILE:CD1	2.05	1.04
1:A:195:LEU:CD1	1:A:200:LYS:CG	2.35	1.03
1:A:49:PRO:O	1:A:53:GLY:CA	2.05	1.03
1:A:111:ILE:HD11	1:A:146:ILE:CD1	1.86	1.03
1:A:195:LEU:HD12	1:A:200:LYS:CG	1.87	1.03
1:A:207:GLU:O	1:A:207:GLU:HG2	1.53	1.03
1:A:151:ILE:O	1:A:155:PRO:HD2	1.59	1.01
1:A:124:LEU:CD1	1:A:129:VAL:CG1	2.38	1.01
1:A:69:LYS:HE2	1:A:187:ASN:OD1	1.59	1.01
1:A:113:GLU:OE1	1:A:119:VAL:HG12	1.59	1.01
1:A:99:ARG:HD3	1:A:153:PHE:CZ	1.94	1.01
1:A:130:TYR:CE1	1:A:170:ILE:HD11	1.96	1.01
1:A:119:VAL:HG23	1:A:119:VAL:O	1.57	1.00
1:A:236:ASP:OD1	1:A:275:ARG:CZ	2.10	1.00
1:A:58:ASN:N	1:A:205:GLU:OE1	1.95	1.00
1:A:157:ARG:HG3	1:A:158:PRO:HD2	1.00	0.99
1:A:61:LEU:HD12	1:A:185:ILE:HG12	1.44	0.98
3:C:21:DG:H2''	3:C:22:DA:C8	1.99	0.98
1:A:106:ARG:HH11	1:A:106:ARG:CG	1.75	0.98

Continued on next page...

Continued from previous page...

Atom-1	Atom-2	Interatomic distance (Å)	Clash overlap (Å)
3:C:2:DC:H2''	3:C:3:DC:H5'	1.45	0.98
1:A:124:LEU:HG	1:A:125:SER:N	1.79	0.98
1:A:103:THR:OG1	1:A:104:PRO:HD2	1.63	0.97
1:A:16:LYS:CE	1:A:274:GLU:HB3	1.94	0.97
1:A:92:LYS:HB3	1:A:144:TYR:CD2	2.02	0.95
3:C:21:DG:H2'	3:C:22:DA:C8	2.00	0.94
1:A:124:LEU:HD11	1:A:129:VAL:CG1	1.96	0.94
1:A:195:LEU:CB	1:A:200:LYS:CG	2.00	0.94
1:A:195:LEU:HB3	1:A:200:LYS:HG3	1.50	0.93
1:A:17:ILE:HD11	1:A:265:GLY:O	1.67	0.93
1:A:152:ASP:CG	1:A:186:THR:OG1	2.06	0.92
1:A:111:ILE:HD11	1:A:146:ILE:HD12	0.94	0.92
1:A:371:GLY:HA2	2:B:5:DC:O2	1.70	0.92
1:A:369:ARG:HH22	2:B:4:DC:H1'	1.35	0.91
1:A:105:TYR:CE1	1:A:124:LEU:CD2	2.52	0.91
1:A:195:LEU:CG	1:A:200:LYS:HG2	2.00	0.91
1:A:207:GLU:O	1:A:207:GLU:CG	2.17	0.90
1:A:153:PHE:HA	1:A:156:LYS:HG3	1.51	0.90
1:A:106:ARG:NH1	3:C:7:DC:OP1	2.04	0.89
1:A:195:LEU:HD12	1:A:200:LYS:HG2	0.92	0.89
1:A:130:TYR:OH	1:A:170:ILE:HD11	1.73	0.89
1:A:236:ASP:OD2	1:A:237:PRO:HD2	1.73	0.89
1:A:171:ASN:OD1	1:A:180:VAL:N	2.04	0.89
1:A:195:LEU:HB2	1:A:200:LYS:CD	2.01	0.89
1:A:197:PRO:HA	1:A:200:LYS:HE2	1.55	0.88
1:A:68:GLY:CA	4:A:1400:ADP:O2A	2.21	0.88
1:A:106:ARG:HG3	1:A:106:ARG:NH1	1.87	0.88
1:A:130:TYR:CZ	1:A:170:ILE:HD11	2.08	0.88
3:C:6:DT:H2''	3:C:7:DC:H5'	1.54	0.87
1:A:105:TYR:CD1	1:A:124:LEU:CD2	2.56	0.87
1:A:152:ASP:OD1	1:A:186:THR:OG1	1.90	0.87
1:A:17:ILE:HG12	1:A:269:GLU:HG3	1.56	0.86
1:A:119:VAL:O	1:A:119:VAL:CG2	2.21	0.86
1:A:236:ASP:CG	1:A:277:ARG:HD2	1.95	0.86
1:A:69:LYS:CE	1:A:187:ASN:OD1	2.23	0.86
1:A:172:GLN:C	1:A:174:LEU:H	1.78	0.85
1:A:191:PHE:O	1:A:195:LEU:HG	1.75	0.85
1:A:195:LEU:CG	1:A:200:LYS:CG	2.54	0.85
1:A:379:ASP:C	1:A:379:ASP:OD1	2.13	0.85
1:A:61:LEU:HD23	1:A:208:LEU:HB2	1.58	0.85
1:A:99:ARG:HD3	1:A:153:PHE:CE2	2.11	0.85

Continued on next page...

Continued from previous page...

Atom-1	Atom-2	Interatomic distance (Å)	Clash overlap (Å)
1:A:155:PRO:HG3	1:A:191:PHE:HE1	1.42	0.85
1:A:58:ASN:OD1	1:A:182:LEU:N	2.09	0.84
1:A:231:ASN:N	1:A:231:ASN:HD22	1.72	0.84
1:A:16:LYS:HE3	1:A:274:GLU:CB	2.06	0.84
1:A:94:ILE:HD11	1:A:146:ILE:HD13	1.60	0.83
1:A:274:GLU:O	1:A:275:ARG:HG2	1.79	0.83
1:A:155:PRO:HG3	1:A:191:PHE:CE1	2.14	0.83
1:A:61:LEU:HA	1:A:208:LEU:O	1.79	0.82
1:A:23:VAL:O	1:A:225:ARG:NH1	2.11	0.82
3:C:21:DG:C2'	3:C:22:DA:H8	1.89	0.82
1:A:62:TYR:CD2	1:A:209:VAL:CG2	2.64	0.81
1:A:63:GLY:O	1:A:187:ASN:CA	2.29	0.81
1:A:195:LEU:O	1:A:200:LYS:HD3	1.80	0.81
1:A:345:ARG:HD2	1:A:345:ARG:O	1.79	0.81
1:A:236:ASP:OD1	1:A:275:ARG:NH1	2.14	0.79
1:A:339:LEU:HD12	1:A:339:LEU:N	1.97	0.79
1:A:124:LEU:HG	1:A:125:SER:C	2.04	0.78
1:A:374:ARG:HD2	2:B:8:DA:OP1	1.83	0.78
1:A:99:ARG:CD	1:A:153:PHE:CZ	2.67	0.78
3:C:21:DG:H2'	3:C:22:DA:H8	1.47	0.77
3:C:10:DT:H2'	3:C:11:DT:H72	1.65	0.77
1:A:165:TYR:O	1:A:168:THR:HG23	1.83	0.77
2:B:14:DC:H2''	2:B:15:DG:C8	2.20	0.77
1:A:146:ILE:HB	1:A:182:LEU:HD23	1.66	0.76
1:A:152:ASP:O	1:A:156:LYS:HG2	1.86	0.76
1:A:172:GLN:O	1:A:174:LEU:N	2.15	0.76
1:A:152:ASP:CG	1:A:186:THR:HG1	1.89	0.75
1:A:154:LEU:HB3	1:A:155:PRO:CD	2.16	0.75
1:A:298:ARG:NE	1:A:391:GLU:OE1	2.19	0.74
1:A:151:ILE:O	1:A:155:PRO:CD	2.35	0.74
1:A:373:THR:HG23	1:A:374:ARG:N	2.02	0.74
1:A:172:GLN:C	1:A:174:LEU:N	2.37	0.74
1:A:315:GLU:O	1:A:315:GLU:HG2	1.85	0.74
1:A:238:ASP:HA	1:A:241:PRO:HG2	1.67	0.74
1:A:154:LEU:HB3	1:A:155:PRO:HD3	1.70	0.73
1:A:225:ARG:NH2	4:A:1400:ADP:O2'	2.21	0.73
1:A:164:LEU:HD22	1:A:203:LEU:HD21	1.70	0.73
1:A:16:LYS:HE2	1:A:274:GLU:CG	2.18	0.73
1:A:99:ARG:CD	1:A:153:PHE:CE2	2.72	0.73
1:A:130:TYR:HE1	1:A:170:ILE:HD11	1.48	0.72
1:A:61:LEU:CD2	1:A:208:LEU:HB3	2.17	0.72

Continued on next page...

Continued from previous page...

Atom-1	Atom-2	Interatomic distance (Å)	Clash overlap (Å)
1:A:124:LEU:CD1	1:A:129:VAL:CB	2.68	0.72
1:A:242:LEU:HD22	1:A:278:ARG:HD2	1.70	0.72
1:A:337:LEU:HB2	1:A:339:LEU:HD13	1.72	0.72
1:A:236:ASP:OD2	1:A:277:ARG:HD2	1.88	0.72
1:A:91:VAL:HG22	1:A:143:ILE:HD12	1.72	0.71
1:A:337:LEU:HB3	1:A:339:LEU:HD11	1.72	0.71
3:C:10:DT:H2'	3:C:11:DT:C7	2.20	0.71
1:A:42:ARG:HD2	1:A:208:LEU:HD21	1.72	0.71
1:A:103:THR:O	1:A:107:VAL:HG23	1.90	0.70
1:A:124:LEU:CD1	1:A:129:VAL:HB	2.20	0.70
1:A:164:LEU:O	1:A:168:THR:HG22	1.90	0.70
1:A:124:LEU:O	3:C:5:DC:H2''	1.90	0.70
1:A:153:PHE:HA	1:A:156:LYS:CG	2.22	0.70
1:A:236:ASP:HB2	1:A:276:VAL:O	1.90	0.70
1:A:113:GLU:CD	1:A:119:VAL:CG1	2.58	0.70
1:A:103:THR:HG21	3:C:7:DC:OP1	1.92	0.69
1:A:22:TRP:HA	1:A:25:LEU:HD12	1.74	0.69
1:A:238:ASP:C	1:A:241:PRO:HD2	2.12	0.69
1:A:105:TYR:HD1	3:C:6:DT:H5''	1.58	0.69
1:A:91:VAL:HG12	1:A:91:VAL:O	1.93	0.69
1:A:48:ALA:O	1:A:51:LEU:HB2	1.93	0.68
1:A:318:GLY:O	1:A:320:PRO:N	2.27	0.68
3:C:13:DC:H1'	3:C:14:DC:H5'	1.75	0.68
1:A:124:LEU:HD13	1:A:129:VAL:HB	1.76	0.67
1:A:275:ARG:HH22	1:A:277:ARG:HH11	1.41	0.66
1:A:103:THR:OG1	1:A:104:PRO:CD	2.41	0.66
3:C:12:DT:H1'	3:C:13:DC:H5'	1.78	0.66
1:A:385:VAL:HG12	1:A:389:LEU:HD11	1.78	0.66
1:A:108:ALA:HA	1:A:111:ILE:HG22	1.77	0.66
1:A:43:LEU:HA	1:A:46:VAL:HG12	1.78	0.66
1:A:16:LYS:CE	1:A:274:GLU:HG2	2.20	0.65
1:A:236:ASP:CG	1:A:275:ARG:NH1	2.49	0.65
1:A:124:LEU:HG	1:A:125:SER:CA	2.26	0.65
1:A:16:LYS:CE	1:A:274:GLU:CB	2.72	0.65
1:A:231:ASN:N	1:A:231:ASN:ND2	2.45	0.65
1:A:94:ILE:CD1	1:A:146:ILE:HD13	2.27	0.64
1:A:158:PRO:C	1:A:160:GLY:H	2.00	0.64
1:A:69:LYS:NZ	1:A:187:ASN:OD1	2.30	0.64
1:A:343:THR:HG22	1:A:344:LEU:N	2.12	0.64
1:A:385:VAL:O	1:A:388:ALA:HB3	1.98	0.64
1:A:322:SER:HA	1:A:374:ARG:O	1.97	0.64

Continued on next page...

Continued from previous page...

Atom-1	Atom-2	Interatomic distance (Å)	Clash overlap (Å)
1:A:337:LEU:CB	1:A:339:LEU:CD1	2.76	0.64
1:A:124:LEU:HD13	1:A:129:VAL:CG1	2.26	0.63
1:A:43:LEU:HA	1:A:46:VAL:CG1	2.28	0.63
1:A:351:ILE:HD13	1:A:376:VAL:HG21	1.81	0.63
1:A:234:VAL:HG23	1:A:275:ARG:HA	1.81	0.62
1:A:214:THR:OG1	1:A:217:GLN:HG3	1.99	0.62
3:C:5:DC:H2'	3:C:5:DC:O2	1.99	0.62
1:A:139:ARG:NH1	1:A:139:ARG:HG2	2.13	0.62
1:A:105:TYR:HE2	1:A:109:SER:HB2	1.65	0.62
1:A:148:LEU:HB2	1:A:151:ILE:CG2	2.29	0.61
1:A:281:VAL:O	1:A:284:ALA:HB3	2.00	0.61
1:A:31:ASP:OD1	1:A:78:ARG:NH2	2.33	0.61
1:A:105:TYR:HD2	1:A:105:TYR:C	2.04	0.61
1:A:186:THR:OG1	1:A:187:ASN:N	2.34	0.61
1:A:324:GLY:HA3	2:B:7:DC:OP1	2.00	0.61
1:A:149:ASP:HA	1:A:185:ILE:HB	1.82	0.61
1:A:191:PHE:C	1:A:193:GLU:H	2.04	0.61
1:A:146:ILE:HB	1:A:182:LEU:CD2	2.29	0.61
1:A:125:SER:O	1:A:128:GLU:N	2.34	0.60
1:A:277:ARG:CG	1:A:278:ARG:H	2.14	0.60
1:A:61:LEU:CD1	1:A:185:ILE:HG12	2.27	0.60
1:A:369:ARG:NH2	2:B:5:DC:O4'	2.32	0.60
1:A:360:VAL:HG13	1:A:361:LYS:N	2.16	0.60
2:B:18:DG:O5'	2:B:18:DG:H8	1.83	0.60
1:A:105:TYR:C	1:A:105:TYR:CD2	2.75	0.60
1:A:15:SER:O	1:A:18:PHE:O	2.19	0.60
1:A:17:ILE:CG1	1:A:269:GLU:HG3	2.31	0.60
1:A:124:LEU:HD12	1:A:129:VAL:H	1.66	0.60
1:A:195:LEU:HD13	1:A:200:LYS:HA	1.83	0.60
1:A:337:LEU:HB3	1:A:339:LEU:CD1	2.31	0.60
1:A:308:LEU:HA	1:A:311:ILE:HD12	1.83	0.60
1:A:369:ARG:HG3	1:A:369:ARG:O	2.01	0.59
1:A:62:TYR:CE2	1:A:209:VAL:HG21	2.38	0.59
1:A:91:VAL:HG22	1:A:143:ILE:CD1	2.32	0.59
1:A:46:VAL:O	1:A:47:LEU:HD23	2.02	0.59
1:A:189:LEU:O	1:A:191:PHE:N	2.32	0.59
1:A:337:LEU:HD11	1:A:398:LEU:HD11	1.85	0.59
1:A:17:ILE:CD1	1:A:265:GLY:O	2.46	0.59
1:A:55:LYS:HZ3	1:A:181:SER:HA	1.68	0.59
1:A:62:TYR:CE2	1:A:209:VAL:CG2	2.86	0.58
1:A:139:ARG:HG2	1:A:139:ARG:HH11	1.66	0.58

Continued on next page...

Continued from previous page...

Atom-1	Atom-2	Interatomic distance (Å)	Clash overlap (Å)
1:A:130:TYR:HH	1:A:170:ILE:CD1	2.16	0.58
1:A:337:LEU:CB	1:A:339:LEU:HD13	2.33	0.58
1:A:61:LEU:CD2	1:A:208:LEU:CB	2.72	0.58
1:A:277:ARG:H	1:A:280:HIS:HD2	1.49	0.58
1:A:15:SER:C	1:A:17:ILE:N	2.57	0.58
1:A:75:LEU:HD23	1:A:79:ARG:HD2	1.86	0.58
1:A:30:PRO:HG2	1:A:33:LEU:CD2	2.34	0.58
1:A:167:ILE:HG22	1:A:182:LEU:HD11	1.86	0.57
1:A:46:VAL:O	1:A:46:VAL:HG22	2.04	0.57
1:A:339:LEU:N	1:A:339:LEU:CD1	2.65	0.57
1:A:24:LEU:HD13	1:A:262:ARG:HB2	1.85	0.57
1:A:61:LEU:HD12	1:A:185:ILE:CG1	2.27	0.57
1:A:75:LEU:CD2	1:A:79:ARG:HD2	2.34	0.57
1:A:30:PRO:HG2	1:A:33:LEU:HD21	1.85	0.57
1:A:192:VAL:O	1:A:200:LYS:HD2	2.04	0.57
1:A:70:THR:OG1	4:A:1400:ADP:O3B	2.22	0.57
1:A:94:ILE:HD11	1:A:146:ILE:CD1	2.34	0.56
1:A:139:ARG:HH11	1:A:139:ARG:CG	2.18	0.56
1:A:197:PRO:HA	1:A:200:LYS:CE	2.32	0.56
1:A:60:LEU:HB2	1:A:203:LEU:O	2.05	0.56
1:A:105:TYR:CE2	1:A:109:SER:HB2	2.40	0.56
1:A:373:THR:CG2	1:A:374:ARG:N	2.69	0.56
1:A:58:ASN:HB2	1:A:205:GLU:OE1	2.05	0.56
1:A:17:ILE:HG12	1:A:269:GLU:CG	2.33	0.56
1:A:117:VAL:HG12	1:A:118:ARG:N	2.21	0.56
1:A:150:GLU:N	1:A:185:ILE:O	2.38	0.56
1:A:62:TYR:CD2	1:A:209:VAL:HG23	2.40	0.56
2:B:7:DC:H2'	2:B:8:DA:O5'	2.05	0.56
1:A:50:ALA:HA	1:A:54:GLU:HA	1.88	0.56
1:A:113:GLU:OE1	1:A:119:VAL:CG1	2.46	0.56
1:A:189:LEU:C	1:A:191:PHE:H	2.08	0.56
1:A:92:LYS:HB3	1:A:144:TYR:CE2	2.41	0.56
1:A:231:ASN:O	1:A:234:VAL:HG12	2.06	0.55
2:B:6:DA:H1'	2:B:7:DC:O4'	2.05	0.55
1:A:333:LEU:HD22	1:A:398:LEU:HD13	1.87	0.55
1:A:61:LEU:HD22	1:A:210:PHE:HE1	1.71	0.55
1:A:118:ARG:O	1:A:120:PRO:HD2	2.06	0.55
1:A:155:PRO:CG	1:A:191:PHE:HE1	2.16	0.55
1:A:112:ALA:O	1:A:115:VAL:HG23	2.07	0.55
1:A:103:THR:CG2	1:A:106:ARG:HG3	2.36	0.55
1:A:117:VAL:HG12	1:A:118:ARG:H	1.72	0.55

Continued on next page...

Continued from previous page...

Atom-1	Atom-2	Interatomic distance (Å)	Clash overlap (Å)
3:C:19:DG:H2''	3:C:20:DA:N7	2.22	0.55
1:A:337:LEU:O	1:A:339:LEU:HD12	2.07	0.55
1:A:337:LEU:C	1:A:339:LEU:HD12	2.28	0.54
1:A:363:ARG:HG3	1:A:364:VAL:N	2.21	0.54
1:A:19:ARG:HB3	1:A:231:ASN:ND2	2.21	0.54
1:A:397:ARG:C	1:A:399:LEU:H	2.09	0.54
1:A:157:ARG:CG	1:A:158:PRO:CD	2.61	0.54
1:A:161:GLN:NE2	1:A:194:ASN:OD1	2.40	0.54
1:A:197:PRO:HA	1:A:200:LYS:HB2	1.88	0.54
1:A:345:ARG:NH2	2:B:10:DG:N7	2.54	0.54
1:A:62:TYR:HD2	1:A:209:VAL:CG2	2.18	0.54
1:A:255:ARG:O	1:A:259:ASP:N	2.34	0.54
1:A:369:ARG:HH21	2:B:5:DC:H5'	1.73	0.54
3:C:5:DC:O2	3:C:5:DC:C2'	2.56	0.53
1:A:106:ARG:CG	1:A:106:ARG:NH1	2.45	0.53
1:A:222:LEU:HB2	1:A:240:VAL:CG1	2.38	0.53
1:A:238:ASP:HA	1:A:241:PRO:CG	2.37	0.53
3:C:20:DA:H2''	3:C:21:DG:C8	2.44	0.53
1:A:360:VAL:CG1	1:A:361:LYS:N	2.72	0.53
1:A:157:ARG:CB	1:A:158:PRO:HD2	2.37	0.53
1:A:173:GLU:O	1:A:174:LEU:HB2	2.07	0.53
1:A:308:LEU:HD21	1:A:359:ILE:HD11	1.91	0.53
1:A:354:LEU:O	1:A:359:ILE:HG22	2.08	0.53
3:C:5:DC:H3'	3:C:6:DT:H71	1.91	0.53
1:A:21:ARG:NH1	1:A:266:GLU:OE1	2.41	0.53
1:A:262:ARG:HG3	1:A:263:VAL:N	2.23	0.53
1:A:75:LEU:HD21	1:A:79:ARG:NE	2.23	0.52
1:A:198:ARG:O	1:A:201:SER:OG	2.27	0.52
1:A:130:TYR:OH	1:A:170:ILE:HD12	2.01	0.52
1:A:319:ARG:NH1	1:A:367:ARG:HH22	2.07	0.52
3:C:14:DC:H2'	3:C:15:DT:C6	2.44	0.52
1:A:94:ILE:HG12	1:A:94:ILE:O	2.09	0.52
1:A:191:PHE:O	1:A:195:LEU:CG	2.51	0.52
1:A:16:LYS:CE	1:A:274:GLU:CG	2.85	0.52
1:A:215:ALA:N	1:A:216:PRO:HD2	2.25	0.52
1:A:124:LEU:HD13	1:A:129:VAL:CB	2.36	0.52
3:C:15:DT:H1'	3:C:16:DG:H5'	1.92	0.52
1:A:17:ILE:HD13	1:A:268:ALA:HB3	1.92	0.51
1:A:47:LEU:HD13	1:A:145:ILE:HD12	1.93	0.51
1:A:134:VAL:O	1:A:134:VAL:HG12	2.11	0.51
1:A:157:ARG:HG3	1:A:158:PRO:HD3	1.80	0.51

Continued on next page...

Continued from previous page...

Atom-1	Atom-2	Interatomic distance (Å)	Clash overlap (Å)
1:A:329:ARG:HA	1:A:332:GLU:HB2	1.93	0.51
1:A:221:ILE:HG22	1:A:222:LEU:N	2.26	0.51
1:A:53:GLY:C	1:A:54:GLU:HG2	2.29	0.51
1:A:99:ARG:HD2	1:A:153:PHE:CE2	2.46	0.51
1:A:147:VAL:HG22	1:A:183:VAL:HB	1.91	0.51
1:A:153:PHE:O	1:A:156:LYS:HB2	2.10	0.51
1:A:292:ARG:O	1:A:296:VAL:HG23	2.11	0.51
1:A:327:TYR:O	1:A:330:TYR:HB3	2.10	0.51
3:C:2:DC:H2''	3:C:3:DC:C5'	2.31	0.51
1:A:209:VAL:O	1:A:211:PRO:HD3	2.11	0.51
1:A:36:ARG:NE	1:A:67:THR:O	2.44	0.51
1:A:130:TYR:O	1:A:133:LEU:HB3	2.11	0.51
1:A:216:PRO:HA	1:A:219:ARG:HB2	1.92	0.50
1:A:97:ASN:C	1:A:97:ASN:OD1	2.49	0.50
1:A:231:ASN:O	1:A:234:VAL:CG1	2.59	0.50
1:A:270:ARG:O	1:A:272:ARG:HG2	2.12	0.50
1:A:379:ASP:OD1	1:A:379:ASP:O	2.29	0.50
1:A:98:ALA:O	1:A:102:GLU:HA	2.11	0.50
1:A:124:LEU:HD12	1:A:129:VAL:N	2.27	0.50
1:A:309:LEU:O	1:A:313:MET:HG3	2.10	0.50
1:A:62:TYR:CD2	1:A:209:VAL:HG21	2.47	0.50
1:A:240:VAL:HB	1:A:241:PRO:HD3	1.93	0.50
1:A:277:ARG:HG2	1:A:278:ARG:H	1.76	0.50
1:A:112:ALA:HA	1:A:133:LEU:HD13	1.94	0.50
1:A:337:LEU:C	1:A:339:LEU:CD1	2.80	0.50
1:A:364:VAL:O	1:A:364:VAL:CG2	2.60	0.50
1:A:337:LEU:O	1:A:339:LEU:CD1	2.60	0.49
1:A:22:TRP:O	1:A:25:LEU:HB2	2.11	0.49
1:A:24:LEU:HD13	1:A:262:ARG:CB	2.42	0.49
1:A:133:LEU:O	1:A:137:LEU:HB2	2.12	0.49
1:A:289:GLU:O	1:A:293:VAL:HG23	2.12	0.49
1:A:378:LEU:HD12	1:A:382:ARG:HG3	1.94	0.49
1:A:118:ARG:O	1:A:120:PRO:CD	2.60	0.49
1:A:360:VAL:O	1:A:361:LYS:HD2	2.13	0.49
1:A:236:ASP:OD1	1:A:275:ARG:NH2	2.44	0.49
1:A:148:LEU:O	1:A:151:ILE:HG23	2.13	0.49
1:A:191:PHE:C	1:A:193:GLU:N	2.66	0.49
1:A:326:ILE:HD13	1:A:351:ILE:HD11	1.94	0.49
1:A:385:VAL:HG12	1:A:389:LEU:CD1	2.43	0.49
1:A:43:LEU:CA	1:A:46:VAL:HG12	2.42	0.49
1:A:149:ASP:O	1:A:150:GLU:HB2	2.12	0.49

Continued on next page...

Continued from previous page...

Atom-1	Atom-2	Interatomic distance (Å)	Clash overlap (Å)
1:A:345:ARG:HD2	1:A:345:ARG:C	2.31	0.49
1:A:274:GLU:O	1:A:275:ARG:CG	2.56	0.48
1:A:48:ALA:N	1:A:49:PRO:CD	2.75	0.48
1:A:39:GLU:OE2	1:A:39:GLU:N	2.30	0.48
1:A:48:ALA:O	1:A:51:LEU:CB	2.60	0.48
1:A:223:GLU:O	1:A:226:ALA:HB3	2.13	0.48
1:A:338:GLY:C	1:A:339:LEU:HD12	2.33	0.48
1:A:369:ARG:HH22	2:B:4:DC:C1'	2.17	0.48
1:A:302:LEU:O	1:A:305:LYS:HB2	2.13	0.48
1:A:130:TYR:CZ	1:A:170:ILE:CD1	2.82	0.48
1:A:158:PRO:C	1:A:160:GLY:N	2.65	0.48
1:A:23:VAL:HG11	1:A:228:GLU:HB3	1.96	0.47
1:A:50:ALA:HB2	1:A:56:PRO:HD3	1.95	0.47
1:A:323:THR:OG1	1:A:374:ARG:HB2	2.13	0.47
1:A:378:LEU:CD1	1:A:382:ARG:HG3	2.43	0.47
1:A:225:ARG:NH2	4:A:1400:ADP:HO2'	2.12	0.47
3:C:17:DT:H4'	3:C:18:DG:OP1	2.14	0.47
1:A:42:ARG:CD	1:A:208:LEU:HD21	2.42	0.47
1:A:154:LEU:HD23	1:A:164:LEU:HG	1.97	0.47
1:A:100:HIS:O	1:A:101:ARG:HG3	2.15	0.47
1:A:152:ASP:OD2	1:A:186:THR:OG1	2.18	0.47
1:A:124:LEU:HD12	1:A:129:VAL:HB	1.96	0.47
1:A:58:ASN:O	1:A:205:GLU:HB2	2.14	0.47
1:A:111:ILE:HD12	1:A:146:ILE:HG21	1.97	0.47
1:A:309:LEU:HD22	1:A:395:VAL:CG1	2.45	0.47
1:A:260:LEU:HD12	1:A:260:LEU:HA	1.73	0.47
1:A:323:THR:HG21	2:B:8:DA:P	2.55	0.47
1:A:173:GLU:O	1:A:174:LEU:CB	2.63	0.47
1:A:222:LEU:HB2	1:A:240:VAL:HG13	1.95	0.47
1:A:15:SER:O	1:A:17:ILE:N	2.47	0.47
1:A:54:GLU:HB2	1:A:55:LYS:H	1.64	0.47
1:A:25:LEU:CD2	1:A:26:PRO:HD2	2.45	0.46
1:A:18:PHE:C	1:A:231:ASN:HD21	2.18	0.46
1:A:49:PRO:O	1:A:53:GLY:C	2.53	0.46
1:A:318:GLY:O	1:A:319:ARG:C	2.52	0.46
1:A:368:GLY:HA3	3:C:20:DA:H5'	1.96	0.46
1:A:213:TYR:HA	1:A:217:GLN:OE1	2.15	0.46
1:A:238:ASP:CA	1:A:241:PRO:HD2	2.46	0.46
1:A:386:GLU:HA	1:A:389:LEU:HD12	1.98	0.46
1:A:222:LEU:O	1:A:223:GLU:C	2.53	0.46
1:A:355:ASP:O	1:A:361:LYS:NZ	2.48	0.46

Continued on next page...

Continued from previous page...

Atom-1	Atom-2	Interatomic distance (Å)	Clash overlap (Å)
1:A:196:GLU:HB2	1:A:199:VAL:HG23	1.98	0.46
1:A:124:LEU:O	3:C:5:DC:C2'	2.60	0.46
1:A:148:LEU:HB2	1:A:151:ILE:HG23	1.96	0.46
1:A:94:ILE:HG12	1:A:146:ILE:HA	1.96	0.45
2:B:3:DT:H3	3:C:20:DA:H2	1.64	0.45
1:A:343:THR:CG2	1:A:344:LEU:N	2.78	0.45
1:A:30:PRO:O	1:A:75:LEU:HD12	2.17	0.45
1:A:61:LEU:CD2	1:A:208:LEU:HB2	2.39	0.45
1:A:105:TYR:HD1	3:C:6:DT:C5'	2.29	0.45
1:A:70:THR:HG23	1:A:149:ASP:OD2	2.16	0.45
1:A:379:ASP:OD1	1:A:380:ALA:N	2.48	0.45
1:A:202:SER:C	1:A:204:GLY:N	2.69	0.45
1:A:296:VAL:O	1:A:299:THR:N	2.50	0.45
2:B:13:DA:H2''	2:B:14:DC:OP2	2.17	0.45
1:A:214:THR:O	1:A:217:GLN:HB2	2.17	0.45
1:A:381:ASP:OD1	1:A:383:LEU:HD12	2.16	0.45
1:A:125:SER:O	1:A:126:VAL:C	2.55	0.45
1:A:356:MET:C	1:A:358:GLY:H	2.21	0.45
1:A:231:ASN:HD22	1:A:231:ASN:H	1.60	0.44
1:A:165:TYR:O	1:A:166:ARG:C	2.56	0.44
1:A:343:THR:HG22	1:A:344:LEU:H	1.82	0.44
2:B:14:DC:H2''	2:B:15:DG:N7	2.32	0.44
1:A:92:LYS:O	1:A:144:TYR:HA	2.17	0.44
1:A:248:ALA:O	1:A:250:GLU:N	2.51	0.44
1:A:188:SER:C	1:A:190:GLY:N	2.70	0.44
1:A:236:ASP:CG	1:A:275:ARG:HH12	2.21	0.44
1:A:105:TYR:CD1	3:C:6:DT:H5''	2.46	0.44
1:A:124:LEU:HD12	1:A:129:VAL:CB	2.44	0.44
1:A:153:PHE:HD1	1:A:153:PHE:H	1.64	0.44
1:A:342:VAL:HG23	1:A:343:THR:N	2.31	0.44
1:A:367:ARG:O	1:A:370:TYR:HB2	2.18	0.44
1:A:92:LYS:CB	1:A:144:TYR:CE2	3.01	0.43
1:A:248:ALA:C	1:A:250:GLU:H	2.21	0.43
1:A:249:ARG:O	1:A:249:ARG:HG2	2.17	0.43
1:A:47:LEU:HD11	1:A:145:ILE:HG21	2.00	0.43
1:A:195:LEU:O	1:A:200:LYS:CD	2.61	0.43
2:B:4:DC:H2''	2:B:5:DC:OP2	2.18	0.43
1:A:103:THR:HG23	1:A:106:ARG:H	1.82	0.43
1:A:68:GLY:HA2	4:A:1400:ADP:PA	2.53	0.43
1:A:153:PHE:CD1	1:A:153:PHE:N	2.86	0.43
1:A:239:VAL:HG12	1:A:240:VAL:N	2.33	0.43

Continued on next page...

Continued from previous page...

Atom-1	Atom-2	Interatomic distance (Å)	Clash overlap (Å)
1:A:369:ARG:NH2	2:B:5:DC:H5'	2.32	0.43
1:A:36:ARG:NH1	1:A:211:PRO:O	2.51	0.43
1:A:235:LEU:HD12	1:A:276:VAL:HG21	2.01	0.43
1:A:108:ALA:O	1:A:111:ILE:HG22	2.18	0.43
1:A:369:ARG:HH21	2:B:5:DC:C4'	2.31	0.43
1:A:162:ASP:OD2	1:A:162:ASP:N	2.51	0.43
1:A:238:ASP:CA	1:A:241:PRO:HG2	2.43	0.43
1:A:364:VAL:O	1:A:364:VAL:HG22	2.18	0.43
2:B:5:DC:OP2	2:B:5:DC:H6	2.01	0.43
1:A:124:LEU:HD11	1:A:126:VAL:HA	2.01	0.43
1:A:191:PHE:CD2	1:A:195:LEU:HD21	2.54	0.43
1:A:322:SER:O	1:A:323:THR:C	2.57	0.43
1:A:238:ASP:HA	1:A:241:PRO:HD2	2.00	0.43
1:A:25:LEU:HB3	1:A:26:PRO:HD2	2.01	0.42
1:A:69:LYS:HE3	4:A:1400:ADP:O2B	2.19	0.42
1:A:163:LEU:O	1:A:167:ILE:HG13	2.19	0.42
1:A:238:ASP:HA	1:A:241:PRO:CD	2.49	0.42
1:A:256:ARG:O	1:A:260:LEU:HB2	2.18	0.42
1:A:374:ARG:NH2	2:B:9:DG:OP2	2.52	0.42
1:A:381:ASP:O	1:A:384:ALA:HB3	2.18	0.42
1:A:24:LEU:CD1	1:A:262:ARG:HB2	2.49	0.42
1:A:369:ARG:HH21	2:B:5:DC:C5'	2.32	0.42
2:B:16:DG:H4'	2:B:17:DA:OP1	2.19	0.42
2:B:17:DA:H61	3:C:6:DT:H3	1.68	0.42
1:A:356:MET:C	1:A:358:GLY:N	2.72	0.42
2:B:15:DG:H2''	2:B:16:DG:C8	2.55	0.42
2:B:20:DG:C5'	2:B:20:DG:C8	3.03	0.42
1:A:189:LEU:C	1:A:191:PHE:N	2.71	0.42
1:A:192:VAL:HA	1:A:195:LEU:HD11	2.02	0.42
1:A:208:LEU:HD23	1:A:208:LEU:HA	1.67	0.42
1:A:318:GLY:O	1:A:320:PRO:CD	2.67	0.42
1:A:75:LEU:O	1:A:76:VAL:C	2.58	0.42
1:A:277:ARG:CG	1:A:278:ARG:N	2.81	0.42
3:C:2:DC:C2'	3:C:3:DC:H5'	2.33	0.42
1:A:327:TYR:HD1	1:A:347:VAL:HG21	1.84	0.41
1:A:55:LYS:HE2	1:A:171:ASN:ND2	2.34	0.41
1:A:335:SER:C	1:A:337:LEU:N	2.74	0.41
3:C:11:DT:H2''	3:C:12:DT:H5'	2.00	0.41
1:A:255:ARG:O	1:A:259:ASP:HB2	2.20	0.41
1:A:25:LEU:HD22	1:A:26:PRO:HD2	2.01	0.41
1:A:46:VAL:O	1:A:46:VAL:CG2	2.66	0.41

Continued on next page...

Continued from previous page...

Atom-1	Atom-2	Interatomic distance (Å)	Clash overlap (Å)
1:A:271:ARG:H	1:A:271:ARG:HG2	1.74	0.41
1:A:122:THR:HG23	2:B:19:DG:H1'	2.03	0.41
1:A:253:ASP:OD2	1:A:253:ASP:C	2.59	0.41
1:A:263:VAL:HG21	1:A:288:ILE:HD11	2.02	0.41
1:A:378:LEU:HD23	1:A:378:LEU:HA	1.89	0.41
1:A:397:ARG:C	1:A:399:LEU:N	2.72	0.41
1:A:75:LEU:HD23	1:A:75:LEU:C	2.40	0.41
1:A:398:LEU:H	1:A:398:LEU:HG	1.62	0.41
1:A:68:GLY:C	4:A:1400:ADP:O2A	2.58	0.41
1:A:124:LEU:HD23	3:C:6:DT:H5'	2.03	0.41
3:C:8:DC:H2''	3:C:9:DG:OP2	2.20	0.41
1:A:40:LEU:HD11	1:A:75:LEU:HD22	2.03	0.41
1:A:98:ALA:HB3	1:A:150:GLU:O	2.21	0.41
2:B:14:DC:OP2	2:B:14:DC:H2'	2.20	0.41
1:A:90:LEU:HD12	1:A:90:LEU:HA	1.98	0.41
1:A:240:VAL:N	1:A:241:PRO:HD2	2.36	0.41
1:A:75:LEU:HD21	1:A:79:ARG:CZ	2.52	0.40
1:A:192:VAL:HA	1:A:195:LEU:CD1	2.51	0.40
2:B:18:DG:O5'	2:B:18:DG:C8	2.71	0.40
1:A:392:ASP:HA	1:A:393:PRO:HD3	1.72	0.40
1:A:396:ALA:O	1:A:399:LEU:N	2.53	0.40
1:A:236:ASP:OD2	1:A:277:ARG:NH1	2.54	0.40

There are no symmetry-related clashes.

5.3 Torsion angles [i](#)

5.3.1 Protein backbone [i](#)

In the following table, the Percentiles column shows the percent Ramachandran outliers of the chain as a percentile score with respect to all X-ray entries followed by that with respect to entries of similar resolution.

The Analysed column shows the number of residues for which the backbone conformation was analysed, and the total number of residues.

Mol	Chain	Analysed	Favoured	Allowed	Outliers	Percentiles
1	A	378/387 (98%)	291 (77%)	67 (18%)	20 (5%)	2 12

All (20) Ramachandran outliers are listed below:

Mol	Chain	Res	Type
1	A	16	LYS
1	A	173	GLU
1	A	340	GLU
1	A	53	GLY
1	A	159	GLY
1	A	190	GLY
1	A	192	VAL
1	A	126	VAL
1	A	233	GLY
1	A	319	ARG
1	A	398	LEU
1	A	119	VAL
1	A	154	LEU
1	A	164	LEU
1	A	357	LEU
1	A	386	GLU
1	A	105	TYR
1	A	150	GLU
1	A	91	VAL
1	A	342	VAL

5.3.2 Protein sidechains ⓘ

In the following table, the Percentiles column shows the percent sidechain outliers of the chain as a percentile score with respect to all X-ray entries followed by that with respect to entries of similar resolution.

The Analysed column shows the number of residues for which the sidechain conformation was analysed, and the total number of residues.

Mol	Chain	Analysed	Rotameric	Outliers	Percentiles
1	A	324/328 (99%)	238 (74%)	86 (26%)	0 1

All (86) residues with a non-rotameric sidechain are listed below:

Mol	Chain	Res	Type
1	A	17	ILE
1	A	27	ASP
1	A	31	ASP
1	A	42	ARG
1	A	47	LEU
1	A	54	GLU
1	A	55	LYS

Continued on next page...

Continued from previous page...

Mol	Chain	Res	Type
1	A	61	LEU
1	A	62	TYR
1	A	74	ARG
1	A	83	ARG
1	A	94	ILE
1	A	99	ARG
1	A	105	TYR
1	A	106	ARG
1	A	113	GLU
1	A	115	VAL
1	A	119	VAL
1	A	124	LEU
1	A	125	SER
1	A	136	ARG
1	A	139	ARG
1	A	140	LEU
1	A	141	ARG
1	A	143	ILE
1	A	145	ILE
1	A	146	ILE
1	A	148	LEU
1	A	151	ILE
1	A	152	ASP
1	A	162	ASP
1	A	164	LEU
1	A	168	THR
1	A	170	ILE
1	A	180	VAL
1	A	189	LEU
1	A	195	LEU
1	A	198	ARG
1	A	201	SER
1	A	202	SER
1	A	203	LEU
1	A	207	GLU
1	A	209	VAL
1	A	227	GLU
1	A	231	ASN
1	A	234	VAL
1	A	236	ASP
1	A	239	VAL
1	A	246	LEU

Continued on next page...

Continued from previous page...

Mol	Chain	Res	Type
1	A	250	GLU
1	A	255	ARG
1	A	260	LEU
1	A	261	LEU
1	A	262	ARG
1	A	266	GLU
1	A	271	ARG
1	A	272	ARG
1	A	273	GLU
1	A	274	GLU
1	A	276	VAL
1	A	287	GLU
1	A	288	ILE
1	A	289	GLU
1	A	291	ASP
1	A	292	ARG
1	A	294	SER
1	A	310	SER
1	A	315	GLU
1	A	319	ARG
1	A	329	ARG
1	A	335	SER
1	A	339	LEU
1	A	340	GLU
1	A	344	LEU
1	A	345	ARG
1	A	359	ILE
1	A	367	ARG
1	A	369	ARG
1	A	370	TYR
1	A	373	THR
1	A	378	LEU
1	A	379	ASP
1	A	382	ARG
1	A	383	LEU
1	A	397	ARG
1	A	398	LEU

Sometimes sidechains can be flipped to improve hydrogen bonding and reduce clashes. All (3) such sidechains are listed below:

Mol	Chain	Res	Type
1	A	161	GLN

Continued on next page...

Continued from previous page...

Mol	Chain	Res	Type
1	A	231	ASN
1	A	280	HIS

5.3.3 RNA [i](#)

There are no RNA molecules in this entry.

5.4 Non-standard residues in protein, DNA, RNA chains [i](#)

There are no non-standard protein/DNA/RNA residues in this entry.

5.5 Carbohydrates [i](#)

There are no monosaccharides in this entry.

5.6 Ligand geometry [i](#)

Of 2 ligands modelled in this entry, 1 is monoatomic - leaving 1 for Mogul analysis.

In the following table, the Counts columns list the number of bonds (or angles) for which Mogul statistics could be retrieved, the number of bonds (or angles) that are observed in the model and the number of bonds (or angles) that are defined in the Chemical Component Dictionary. The Link column lists molecule types, if any, to which the group is linked. The Z score for a bond length (or angle) is the number of standard deviations the observed value is removed from the expected value. A bond length (or angle) with $|Z| > 2$ is considered an outlier worth inspection. RMSZ is the root-mean-square of all Z scores of the bond lengths (or angles).

Mol	Type	Chain	Res	Link	Bond lengths			Bond angles		
					Counts	RMSZ	$\# Z > 2$	Counts	RMSZ	$\# Z > 2$
4	ADP	A	1400	5	24,29,29	0.95	1 (4%)	29,45,45	1.51	4 (13%)

In the following table, the Chirals column lists the number of chiral outliers, the number of chiral centers analysed, the number of these observed in the model and the number defined in the Chemical Component Dictionary. Similar counts are reported in the Torsion and Rings columns. '-' means no outliers of that kind were identified.

Mol	Type	Chain	Res	Link	Chirals	Torsions	Rings
4	ADP	A	1400	5	-	2/12/32/32	0/3/3/3

All (1) bond length outliers are listed below:

Mol	Chain	Res	Type	Atoms	Z	Observed(Å)	Ideal(Å)
4	A	1400	ADP	C5-C4	2.84	1.48	1.40

All (4) bond angle outliers are listed below:

Mol	Chain	Res	Type	Atoms	Z	Observed(°)	Ideal(°)
4	A	1400	ADP	PA-O3A-PB	-3.17	121.93	132.83
4	A	1400	ADP	C3'-C2'-C1'	3.04	105.56	100.98
4	A	1400	ADP	C4-C5-N7	-3.01	106.27	109.40
4	A	1400	ADP	N3-C2-N1	-2.81	124.28	128.68

There are no chirality outliers.

All (2) torsion outliers are listed below:

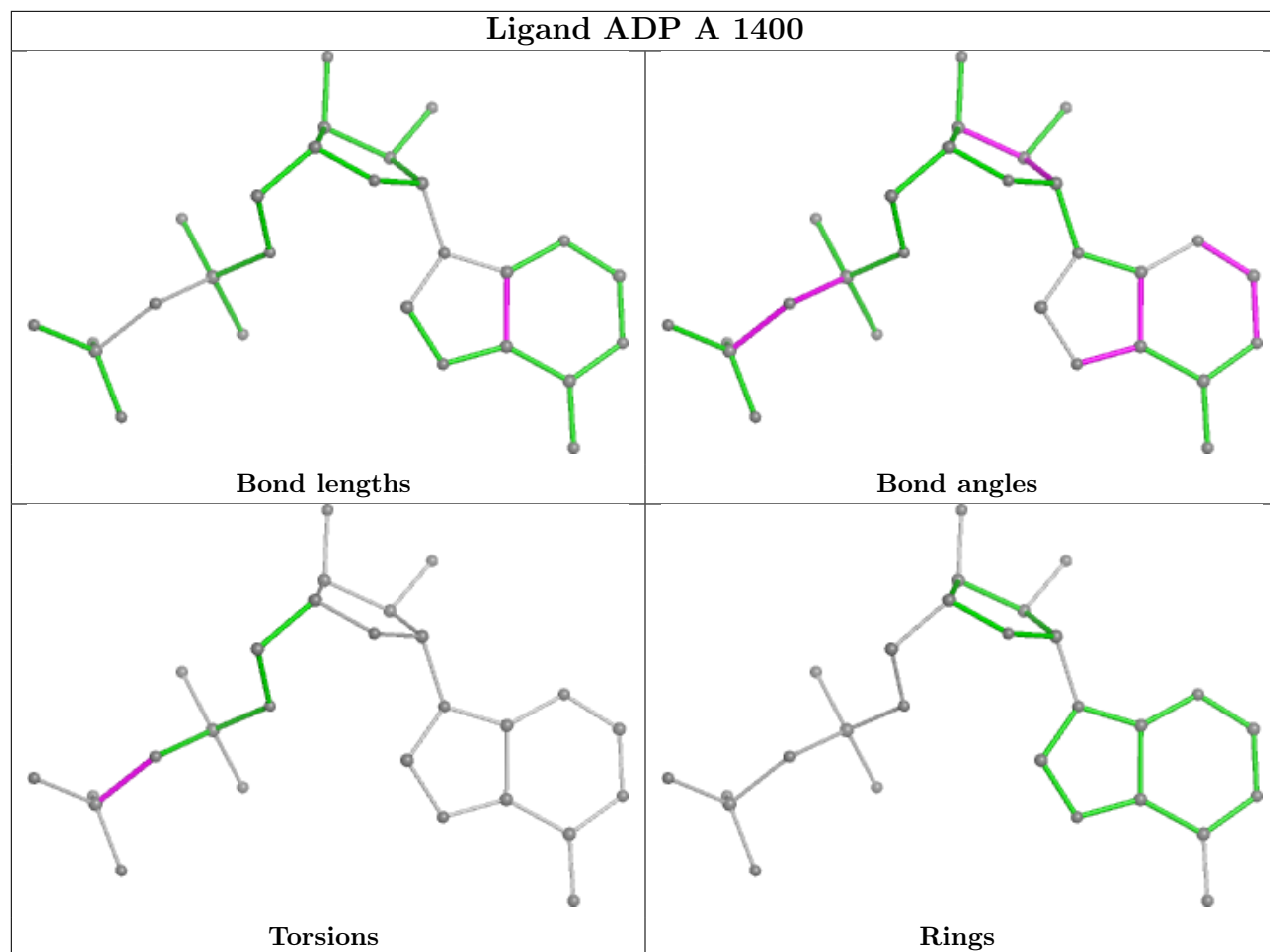
Mol	Chain	Res	Type	Atoms
4	A	1400	ADP	PA-O3A-PB-O3B
4	A	1400	ADP	PA-O3A-PB-O1B

There are no ring outliers.

1 monomer is involved in 8 short contacts:

Mol	Chain	Res	Type	Clashes	Symm-Clashes
4	A	1400	ADP	8	0

The following is a two-dimensional graphical depiction of Mogul quality analysis of bond lengths, bond angles, torsion angles, and ring geometry for all instances of the Ligand of Interest. In addition, ligands with molecular weight > 250 and outliers as shown on the validation Tables will also be included. For torsion angles, if less than 5% of the Mogul distribution of torsion angles is within 10 degrees of the torsion angle in question, then that torsion angle is considered an outlier. Any bond that is central to one or more torsion angles identified as an outlier by Mogul will be highlighted in the graph. For rings, the root-mean-square deviation (RMSD) between the ring in question and similar rings identified by Mogul is calculated over all ring torsion angles. If the average RMSD is greater than 60 degrees and the minimal RMSD between the ring in question and any Mogul-identified rings is also greater than 60 degrees, then that ring is considered an outlier. The outliers are highlighted in purple. The color gray indicates Mogul did not find sufficient equivalents in the CSD to analyse the geometry.



5.7 Other polymers [i](#)

There are no such residues in this entry.

5.8 Polymer linkage issues [i](#)

There are no chain breaks in this entry.

6 Fit of model and data

6.1 Protein, DNA and RNA chains

In the following table, the column labelled ‘#RSRZ > 2’ contains the number (and percentage) of RSRZ outliers, followed by percent RSRZ outliers for the chain as percentile scores relative to all X-ray entries and entries of similar resolution. The OWAB column contains the minimum, median, 95th percentile and maximum values of the occupancy-weighted average B-factor per residue. The column labelled ‘Q < 0.9’ lists the number of (and percentage) of residues with an average occupancy less than 0.9.

Mol	Chain	Analysed	<RSRZ>	#RSRZ > 2		OWAB(Å ²)	Q < 0.9
1	A	382/387 (98%)	0.48	24 (6%)	20 8	82, 109, 129, 155	0
2	B	22/22 (100%)	1.48	6 (27%)	0 0	102, 113, 126, 130	0
3	C	22/22 (100%)	1.21	4 (18%)	1 0	101, 113, 133, 139	0
All	All	426/431 (98%)	0.57	34 (7%)	12 5	82, 110, 129, 155	0

All (34) RSRZ outliers are listed below:

Mol	Chain	Res	Type	RSRZ
1	A	370	TYR	4.3
1	A	139	ARG	4.2
1	A	195	LEU	4.2
1	A	100	HIS	3.5
1	A	182	LEU	3.4
2	B	18	DG	3.1
1	A	196	GLU	3.0
1	A	156	LYS	2.8
1	A	62	TYR	2.8
1	A	193	GLU	2.6
2	B	11	DA	2.6
3	C	2	DC	2.5
3	C	4	DC	2.5
1	A	90	LEU	2.5
1	A	171	ASN	2.5
2	B	17	DA	2.5
1	A	183	VAL	2.5
1	A	190	GLY	2.4
1	A	244	ALA	2.4
1	A	197	PRO	2.4
1	A	147	VAL	2.4
1	A	198	ARG	2.3
1	A	319	ARG	2.3

Continued on next page...

Continued from previous page...

Mol	Chain	Res	Type	RSRZ
2	B	19	DG	2.3
3	C	22	DA	2.3
1	A	180	VAL	2.2
1	A	141	ARG	2.2
1	A	187	ASN	2.2
2	B	21	DG	2.1
1	A	371	GLY	2.1
3	C	3	DC	2.1
1	A	343	THR	2.0
2	B	14	DC	2.0
1	A	243	CYS	2.0

6.2 Non-standard residues in protein, DNA, RNA chains [i](#)

There are no non-standard protein/DNA/RNA residues in this entry.

6.3 Carbohydrates [i](#)

There are no monosaccharides in this entry.

6.4 Ligands [i](#)

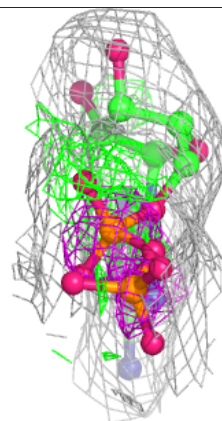
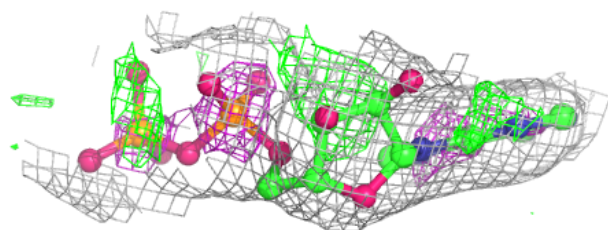
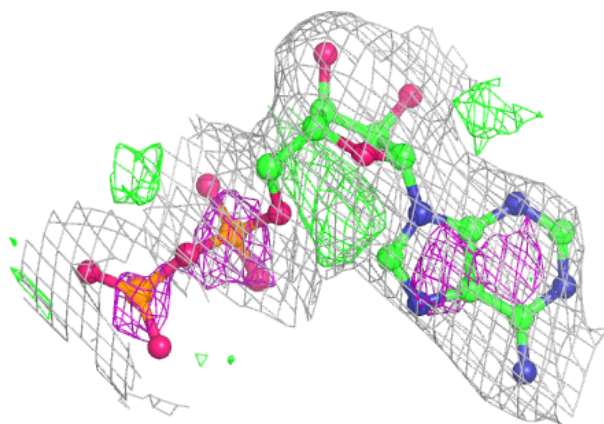
In the following table, the Atoms column lists the number of modelled atoms in the group and the number defined in the chemical component dictionary. The B-factors column lists the minimum, median, 95th percentile and maximum values of B factors of atoms in the group. The column labelled 'Q< 0.9' lists the number of atoms with occupancy less than 0.9.

Mol	Type	Chain	Res	Atoms	RSCC	RSR	B-factors(\AA^2)	Q<0.9
5	MG	A	1401	1/1	0.94	0.35	79,79,79,79	0
4	ADP	A	1400	27/27	0.95	0.16	65,84,104,121	0

The following is a graphical depiction of the model fit to experimental electron density of all instances of the Ligand of Interest. In addition, ligands with molecular weight > 250 and outliers as shown on the geometry validation Tables will also be included. Each fit is shown from different orientation to approximate a three-dimensional view.

Electron density around ADP A 1400:

$2mF_o-DF_c$ (at 0.7 rmsd) in gray
 mF_o-DF_c (at 3 rmsd) in purple (negative)
and green (positive)



6.5 Other polymers [i](#)

There are no such residues in this entry.