



Full wwPDB X-ray Structure Validation Report ⓘ

Apr 28, 2024 – 02:05 am BST

PDB ID : 2JC1
Title : CRYSTAL STRUCTURE OF HEPATITIS C VIRUS POLYMERASE IN
COMPLEX WITH INHIBITOR SB698223
Authors : Wonacott, A.; Skarzynski, T.; Singh, O.M.
Deposited on : 2006-12-18
Resolution : 2.00 Å(reported)

This is a Full wwPDB X-ray Structure Validation Report for a publicly released PDB entry.

We welcome your comments at validation@mail.wwpdb.org

A user guide is available at

<https://www.wwpdb.org/validation/2017/XrayValidationReportHelp>

with specific help available everywhere you see the ⓘ symbol.

The types of validation reports are described at

<http://www.wwpdb.org/validation/2017/FAQs#types>.

The following versions of software and data (see [references ⓘ](#)) were used in the production of this report:

MolProbity	:	4.02b-467
Mogul	:	1.8.4, CSD as541be (2020)
Xtriage (Phenix)	:	1.13
EDS	:	2.36.2
buster-report	:	1.1.7 (2018)
Percentile statistics	:	20191225.v01 (using entries in the PDB archive December 25th 2019)
Refmac	:	5.8.0158
CCP4	:	7.0.044 (Gargrove)
Ideal geometry (proteins)	:	Engh & Huber (2001)
Ideal geometry (DNA, RNA)	:	Parkinson et al. (1996)
Validation Pipeline (wwPDB-VP)	:	2.36.2

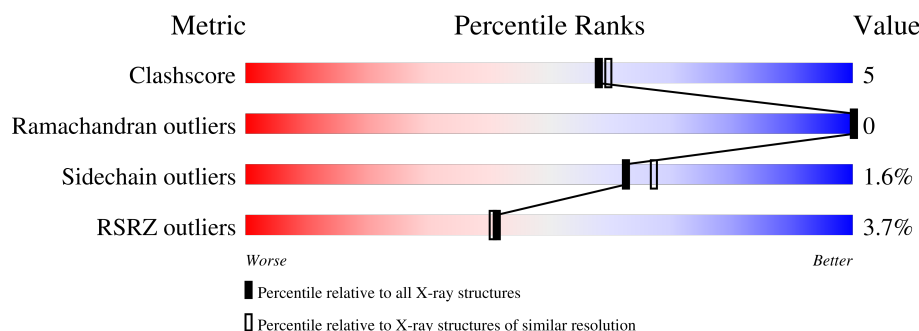
1 Overall quality at a glance

The following experimental techniques were used to determine the structure:

X-RAY DIFFRACTION

The reported resolution of this entry is 2.00 Å.

Percentile scores (ranging between 0-100) for global validation metrics of the entry are shown in the following graphic. The table shows the number of entries on which the scores are based.



Metric	Whole archive (#Entries)	Similar resolution (#Entries, resolution range(Å))
Clashscore	141614	9178 (2.00-2.00)
Ramachandran outliers	138981	9054 (2.00-2.00)
Sidechain outliers	138945	9053 (2.00-2.00)
RSRZ outliers	127900	7900 (2.00-2.00)

The table below summarises the geometric issues observed across the polymeric chains and their fit to the electron density. The red, orange, yellow and green segments of the lower bar indicate the fraction of residues that contain outliers for ≥ 3 , 2, 1 and 0 types of geometric quality criteria respectively. A grey segment represents the fraction of residues that are not modelled. The numeric value for each fraction is indicated below the corresponding segment, with a dot representing fractions $\leq 5\%$. The upper red bar (where present) indicates the fraction of residues that have poor fit to the electron density. The numeric value is given above the bar.

Mol	Chain	Length	Quality of chain
1	A	570	
1	B	570	

2 Entry composition

There are 3 unique types of molecules in this entry. The entry contains 9246 atoms, of which 0 are hydrogens and 0 are deuteriums.

In the tables below, the ZeroOcc column contains the number of atoms modelled with zero occupancy, the AltConf column contains the number of residues with at least one atom in alternate conformation and the Trace column contains the number of residues modelled with at most 2 atoms.

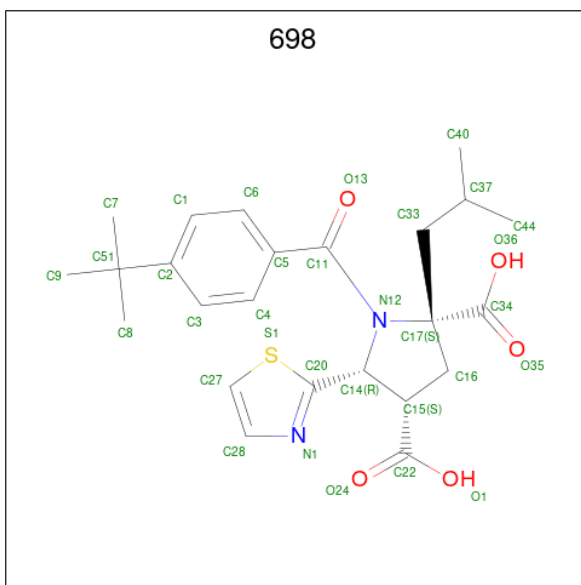
- Molecule 1 is a protein called RNA-DEPENDENT RNA-POLYMERASE.

Mol	Chain	Residues	Atoms					ZeroOcc	AltConf	Trace
1	A	549	Total	C	N	O	S	0	0	0
			4280	2704	755	790	31			
1	B	545	Total	C	N	O	S	0	0	0
			4248	2681	749	787	31			

There are 20 discrepancies between the modelled and reference sequences:

Chain	Residue	Modelled	Actual	Comment	Reference
A	120	HIS	ARG	conflict	UNP O39930
A	131	VAL	GLU	conflict	UNP O39930
A	185	VAL	ALA	conflict	UNP O39930
A	213	ASN	CYS	conflict	UNP O39930
A	254	LYS	ARG	conflict	UNP O39930
A	316	ASN	CYS	conflict	UNP O39930
A	329	VAL	THR	conflict	UNP O39930
A	338	VAL	ALA	conflict	UNP O39930
A	464	GLU	GLN	conflict	UNP O39930
A	531	LYS	ARG	conflict	UNP O39930
B	120	HIS	ARG	conflict	UNP O39930
B	131	VAL	GLU	conflict	UNP O39930
B	185	VAL	ALA	conflict	UNP O39930
B	213	ASN	CYS	conflict	UNP O39930
B	254	LYS	ARG	conflict	UNP O39930
B	316	ASN	CYS	conflict	UNP O39930
B	329	VAL	THR	conflict	UNP O39930
B	338	VAL	ALA	conflict	UNP O39930
B	464	GLU	GLN	conflict	UNP O39930
B	531	LYS	ARG	conflict	UNP O39930

- Molecule 2 is (2S,4S,5R)-1-(4-TERT-BUTYLBENZOYL)-2-ISOBUTYL-5-(1,3-THIAZOL-2-YL)PYRROLIDINE-2,4-DICARBOXYLIC ACID (three-letter code: 698) (formula: C₂₄H₃₀N₂O₅S).



Mol	Chain	Residues	Atoms					ZeroOcc	AltConf
2	A	1	Total 32	C 24	N 2	O 5	S 1	0	0
2	B	1	Total 32	C 24	N 2	O 5	S 1	0	0

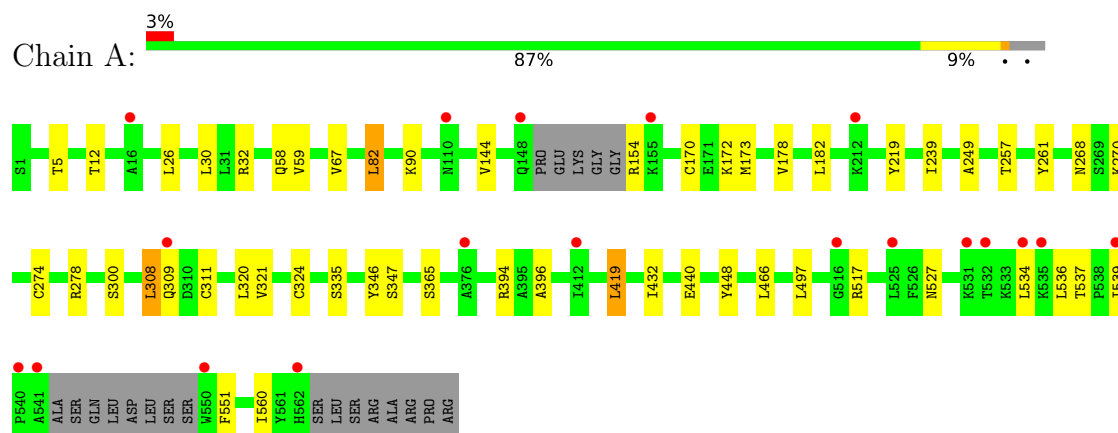
- Molecule 3 is water.

Mol	Chain	Residues	Atoms	ZeroOcc	AltConf
3	A	335	Total O 335 335	0	0
3	B	319	Total O 319 319	0	0

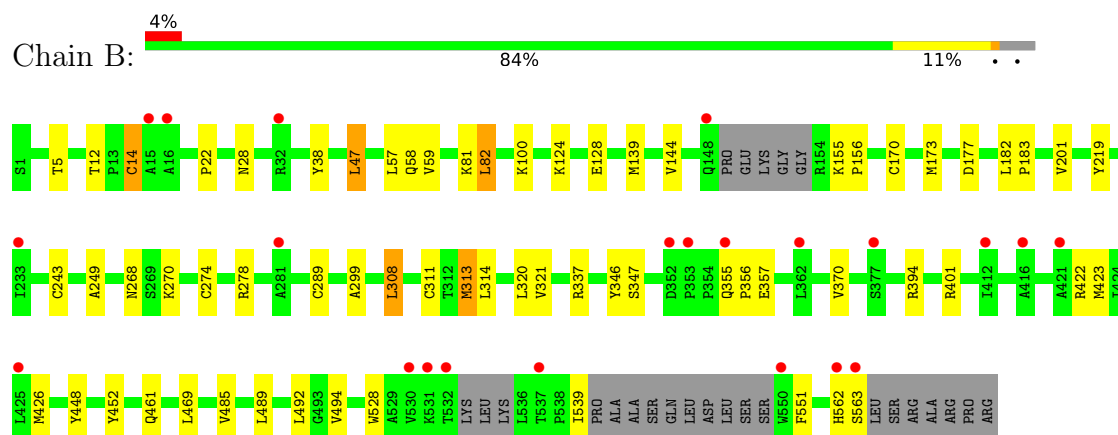
3 Residue-property plots

These plots are drawn for all protein, RNA, DNA and oligosaccharide chains in the entry. The first graphic for a chain summarises the proportions of the various outlier classes displayed in the second graphic. The second graphic shows the sequence view annotated by issues in geometry and electron density. Residues are color-coded according to the number of geometric quality criteria for which they contain at least one outlier: green = 0, yellow = 1, orange = 2 and red = 3 or more. A red dot above a residue indicates a poor fit to the electron density ($RSRZ > 2$). Stretches of 2 or more consecutive residues without any outlier are shown as a green connector. Residues present in the sample, but not in the model, are shown in grey.

• Molecule 1: RNA-DEPENDENT RNA-POLYMERASE



• Molecule 1: RNA-DEPENDENT RNA-POLYMERASE



4 Data and refinement statistics

Property	Value	Source
Space group	P 21 21 21	Depositor
Cell constants a, b, c, α , β , γ	86.24Å 106.26Å 126.40Å 90.00° 90.00° 90.00°	Depositor
Resolution (Å)	20.00 – 2.00 27.37 – 2.00	Depositor EDS
% Data completeness (in resolution range)	100.0 (20.00-2.00) 94.5 (27.37-2.00)	Depositor EDS
R_{merge}	0.07	Depositor
R_{sym}	(Not available)	Depositor
$\langle I/\sigma(I) \rangle$ ¹	2.27 (at 1.99Å)	Xtriage
Refinement program	REFMAC 5.3.0006	Depositor
R, R_{free}	0.191 , 0.233 0.198 , (Not available)	Depositor DCC
R_{free} test set	No test flags present.	wwPDB-VP
Wilson B-factor (Å ²)	21.5	Xtriage
Anisotropy	0.560	Xtriage
Bulk solvent k_{sol} (e/Å ³), B_{sol} (Å ²)	0.38 , 48.4	EDS
L-test for twinning ²	$\langle L \rangle = 0.48$, $\langle L^2 \rangle = 0.31$	Xtriage
Estimated twinning fraction	No twinning to report.	Xtriage
F_o, F_c correlation	0.95	EDS
Total number of atoms	9246	wwPDB-VP
Average B, all atoms (Å ²)	32.0	wwPDB-VP

Xtriage's analysis on translational NCS is as follows: *The analyses of the Patterson function reveals a significant off-origin peak that is 47.60 % of the origin peak, indicating pseudo-translational symmetry. The chance of finding a peak of this or larger height randomly in a structure without pseudo-translational symmetry is equal to 9.7028e-05. The detected translational NCS is most likely also responsible for the elevated intensity ratio.*

¹Intensities estimated from amplitudes.

²Theoretical values of $\langle |L| \rangle$, $\langle L^2 \rangle$ for acentric reflections are 0.5, 0.333 respectively for untwinned datasets, and 0.375, 0.2 for perfectly twinned datasets.

5 Model quality [i](#)

5.1 Standard geometry [i](#)

Bond lengths and bond angles in the following residue types are not validated in this section: 698

The Z score for a bond length (or angle) is the number of standard deviations the observed value is removed from the expected value. A bond length (or angle) with $|Z| > 5$ is considered an outlier worth inspection. RMSZ is the root-mean-square of all Z scores of the bond lengths (or angles).

Mol	Chain	Bond lengths		Bond angles	
		RMSZ	$\# Z > 5$	RMSZ	$\# Z > 5$
1	A	0.63	0/4373	0.66	0/5933
1	B	0.62	1/4339 (0.0%)	0.66	1/5886 (0.0%)
All	All	0.63	1/8712 (0.0%)	0.66	1/11819 (0.0%)

All (1) bond length outliers are listed below:

Mol	Chain	Res	Type	Atoms	Z	Observed(Å)	Ideal(Å)
1	B	14	CYS	CB-SG	-7.13	1.70	1.82

All (1) bond angle outliers are listed below:

Mol	Chain	Res	Type	Atoms	Z	Observed(°)	Ideal(°)
1	B	82	LEU	CA-CB-CG	5.23	127.32	115.30

There are no chirality outliers.

There are no planarity outliers.

5.2 Too-close contacts [i](#)

In the following table, the Non-H and H(model) columns list the number of non-hydrogen atoms and hydrogen atoms in the chain respectively. The H(added) column lists the number of hydrogen atoms added and optimized by MolProbity. The Clashes column lists the number of clashes within the asymmetric unit, whereas Symm-Clashes lists symmetry-related clashes.

Mol	Chain	Non-H	H(model)	H(added)	Clashes	Symm-Clashes
1	A	4280	0	4301	40	0
1	B	4248	0	4256	41	0
2	A	32	0	28	2	0
2	B	32	0	28	2	0

Continued on next page...

Continued from previous page...

Mol	Chain	Non-H	H(model)	H(added)	Clashes	Symm-Clashes
3	A	335	0	0	6	0
3	B	319	0	0	3	0
All	All	9246	0	8613	82	0

The all-atom clashscore is defined as the number of clashes found per 1000 atoms (including hydrogen atoms). The all-atom clashscore for this structure is 5.

All (82) close contacts within the same asymmetric unit are listed below, sorted by their clash magnitude.

Atom-1	Atom-2	Interatomic distance (Å)	Clash overlap (Å)
1:B:5:THR:HG23	1:B:278:ARG:HH12	1.39	0.88
1:B:12:THR:HG21	1:B:270:LYS:HD2	1.62	0.81
1:A:321:VAL:HG21	1:A:365:SER:HB3	1.63	0.81
1:A:321:VAL:CG2	1:A:365:SER:HB3	2.12	0.80
1:A:448:TYR:HE2	1:A:551:PHE:HD1	1.31	0.76
1:B:82:LEU:HD13	1:B:249:ALA:HB2	1.73	0.70
1:B:448:TYR:CE2	1:B:551:PHE:HD1	2.11	0.68
1:A:12:THR:HG21	1:A:270:LYS:HD2	1.77	0.66
1:B:308:LEU:HB3	1:B:311:CYS:SG	2.35	0.66
1:A:448:TYR:CE2	1:A:551:PHE:HD1	2.14	0.66
1:A:154:ARG:N	3:A:2132:HOH:O	2.31	0.64
1:A:5:THR:HG23	1:A:278:ARG:HH12	1.61	0.64
1:A:219:TYR:HB3	1:A:320:LEU:HD23	1.80	0.63
1:B:22:PRO:HG2	1:B:401:ARG:HG3	1.79	0.63
1:B:448:TYR:HE2	1:B:551:PHE:HD1	1.48	0.62
1:B:346:TYR:O	1:B:347:SER:HB3	2.00	0.62
1:B:100:LYS:HG3	3:B:2128:HOH:O	2.00	0.61
1:B:299:ALA:HB1	1:B:313:MET:HE3	1.81	0.61
1:A:527:ASN:HD21	1:A:534:LEU:H	1.50	0.60
1:A:321:VAL:HG21	1:A:365:SER:CB	2.32	0.59
1:A:82:LEU:HD13	1:A:249:ALA:HB2	1.84	0.58
1:A:448:TYR:HE2	1:A:551:PHE:CD1	2.17	0.57
1:B:58:GLN:HG3	1:B:347:SER:HB2	1.86	0.57
1:B:182:LEU:HD12	1:B:243:CYS:SG	2.45	0.56
1:A:440:GLU:HB2	3:A:2286:HOH:O	2.05	0.56
1:B:124:LYS:O	1:B:128:GLU:HG3	2.05	0.56
1:A:448:TYR:CE2	1:A:551:PHE:CD1	2.92	0.56
1:A:58:GLN:HG3	1:A:347:SER:HB2	1.88	0.55
1:A:308:LEU:HB3	1:A:311:CYS:SG	2.47	0.55
1:A:321:VAL:CG2	1:A:365:SER:CB	2.84	0.54
1:B:448:TYR:CE2	1:B:551:PHE:CD1	2.95	0.53

Continued on next page...

Continued from previous page...

Atom-1	Atom-2	Interatomic distance (Å)	Clash overlap (Å)
2:B:600:698:H6	2:B:600:698:H402	1.90	0.53
1:B:170:CYS:HA	1:B:173:MET:HE3	1.91	0.53
1:B:144:VAL:HB	1:B:394:ARG:HG2	1.90	0.52
2:A:600:698:H6	2:A:600:698:H402	1.91	0.52
1:A:178:VAL:HG23	3:A:2148:HOH:O	2.08	0.52
1:B:14:CYS:HB2	1:B:139:MET:HE1	1.93	0.51
1:B:355:GLN:NE2	1:B:357:GLU:OE2	2.43	0.51
1:A:172:LYS:HE3	1:A:560:ILE:HD13	1.92	0.51
1:B:219:TYR:HB3	1:B:320:LEU:HD23	1.91	0.51
2:B:600:698:H402	2:B:600:698:C11	2.42	0.50
1:A:309:GLN:O	1:A:324:CYS:HB2	2.13	0.49
1:B:47:LEU:HD13	1:B:156:PRO:HG3	1.96	0.48
1:A:268:ASN:HB3	1:A:274:CYS:SG	2.54	0.47
1:B:38:TYR:OH	1:B:155:LYS:HG2	2.15	0.46
1:B:170:CYS:HA	1:B:173:MET:CE	2.45	0.46
1:A:59:VAL:CG1	1:B:59:VAL:HG13	2.46	0.46
1:B:346:TYR:O	1:B:347:SER:CB	2.63	0.45
1:B:14:CYS:HB2	1:B:139:MET:CE	2.46	0.45
1:A:257:THR:HA	1:A:261:TYR:HB2	1.97	0.45
1:A:346:TYR:O	1:A:347:SER:HB3	2.16	0.45
1:B:183:PRO:HG3	1:B:289:CYS:SG	2.57	0.45
1:B:278:ARG:NE	3:B:2201:HOH:O	2.41	0.45
1:A:32:ARG:HD3	3:A:2309:HOH:O	2.17	0.44
1:A:308:LEU:CD1	1:A:335:SER:HB3	2.47	0.44
1:A:144:VAL:HB	1:A:394:ARG:HG2	1.99	0.44
1:B:423:MET:HA	1:B:528:TRP:CZ2	2.53	0.43
1:B:201:VAL:HG23	1:B:370:VAL:HG22	1.99	0.43
1:B:461:GLN:NE2	1:B:539:ILE:HG21	2.33	0.43
1:B:489:LEU:HD22	1:B:494:VAL:HG11	2.00	0.43
1:A:90:LYS:NZ	3:A:2089:HOH:O	2.49	0.43
1:A:170:CYS:HA	1:A:173:MET:HE3	2.00	0.43
1:B:268:ASN:HB3	1:B:274:CYS:SG	2.59	0.43
1:A:59:VAL:HG13	1:B:59:VAL:HG13	2.01	0.42
1:A:466:LEU:HD22	1:A:551:PHE:HE2	1.84	0.42
2:A:600:698:H28	3:A:2248:HOH:O	2.18	0.42
1:A:30:LEU:HD23	1:A:396:ALA:HA	2.02	0.42
1:A:59:VAL:HG13	1:B:59:VAL:CG1	2.49	0.42
1:B:355:GLN:HA	1:B:356:PRO:HD3	1.85	0.42
1:A:182:LEU:HD23	1:A:182:LEU:C	2.40	0.41
1:B:314:LEU:HB3	1:B:321:VAL:CG1	2.50	0.41
1:A:321:VAL:HG23	1:A:365:SER:HB3	1.99	0.41

Continued on next page...

Continued from previous page...

Atom-1	Atom-2	Interatomic distance (Å)	Clash overlap (Å)
1:A:26:LEU:HD13	1:A:432:ILE:HG12	2.02	0.41
1:A:419:LEU:HD11	1:A:497:LEU:HD13	2.03	0.41
1:A:170:CYS:HA	1:A:173:MET:CE	2.51	0.41
1:B:28:ASN:ND2	3:B:2028:HOH:O	2.53	0.41
1:B:81:LYS:HG2	1:B:177:ASP:OD2	2.21	0.41
1:A:182:LEU:HD11	1:A:239:ILE:HG22	2.02	0.40
1:B:422:ARG:O	1:B:426:MET:HB2	2.21	0.40
1:B:452:TYR:CE2	1:B:562:HIS:CG	3.09	0.40
1:B:485:VAL:O	1:B:489:LEU:HG	2.22	0.40
1:A:67:VAL:HG11	1:A:300:SER:HB2	2.03	0.40

There are no symmetry-related clashes.

5.3 Torsion angles ⓘ

5.3.1 Protein backbone ⓘ

In the following table, the Percentiles column shows the percent Ramachandran outliers of the chain as a percentile score with respect to all X-ray entries followed by that with respect to entries of similar resolution.

The Analysed column shows the number of residues for which the backbone conformation was analysed, and the total number of residues.

Mol	Chain	Analysed	Favoured	Allowed	Outliers	Percentiles	
1	A	543/570 (95%)	536 (99%)	7 (1%)	0	100	100
1	B	537/570 (94%)	530 (99%)	7 (1%)	0	100	100
All	All	1080/1140 (95%)	1066 (99%)	14 (1%)	0	100	100

There are no Ramachandran outliers to report.

5.3.2 Protein sidechains ⓘ

In the following table, the Percentiles column shows the percent sidechain outliers of the chain as a percentile score with respect to all X-ray entries followed by that with respect to entries of similar resolution.

The Analysed column shows the number of residues for which the sidechain conformation was analysed, and the total number of residues.

Mol	Chain	Analysed	Rotameric	Outliers	Percentiles	
1	A	469/487 (96%)	462 (98%)	7 (2%)	65	69
1	B	466/487 (96%)	458 (98%)	8 (2%)	60	65
All	All	935/974 (96%)	920 (98%)	15 (2%)	62	67

All (15) residues with a non-rotameric sidechain are listed below:

Mol	Chain	Res	Type
1	A	82	LEU
1	A	308	LEU
1	A	419	LEU
1	A	517	ARG
1	A	536	LEU
1	A	537	THR
1	A	539	ILE
1	B	47	LEU
1	B	57	LEU
1	B	308	LEU
1	B	313	MET
1	B	337	ARG
1	B	469	LEU
1	B	492	LEU
1	B	563	SER

Sometimes sidechains can be flipped to improve hydrogen bonding and reduce clashes. All (8) such sidechains are listed below:

Mol	Chain	Res	Type
1	A	49	GLN
1	A	118	HIS
1	A	273	ASN
1	A	309	GLN
1	A	527	ASN
1	B	49	GLN
1	B	117	ASN
1	B	355	GLN

5.3.3 RNA ⓘ

There are no RNA molecules in this entry.

5.4 Non-standard residues in protein, DNA, RNA chains [i](#)

There are no non-standard protein/DNA/RNA residues in this entry.

5.5 Carbohydrates [i](#)

There are no monosaccharides in this entry.

5.6 Ligand geometry [i](#)

2 ligands are modelled in this entry.

In the following table, the Counts columns list the number of bonds (or angles) for which Mogul statistics could be retrieved, the number of bonds (or angles) that are observed in the model and the number of bonds (or angles) that are defined in the Chemical Component Dictionary. The Link column lists molecule types, if any, to which the group is linked. The Z score for a bond length (or angle) is the number of standard deviations the observed value is removed from the expected value. A bond length (or angle) with $|Z| > 2$ is considered an outlier worth inspection. RMSZ is the root-mean-square of all Z scores of the bond lengths (or angles).

Mol	Type	Chain	Res	Link	Bond lengths			Bond angles		
					Counts	RMSZ	$\# Z > 2$	Counts	RMSZ	$\# Z > 2$
2	698	B	600	-	32,34,34	1.02	2 (6%)	33,52,52	0.97	0
2	698	A	600	-	32,34,34	1.05	3 (9%)	33,52,52	0.88	2 (6%)

In the following table, the Chirals column lists the number of chiral outliers, the number of chiral centers analysed, the number of these observed in the model and the number defined in the Chemical Component Dictionary. Similar counts are reported in the Torsion and Rings columns. '-' means no outliers of that kind were identified.

Mol	Type	Chain	Res	Link	Chirals	Torsions	Rings
2	698	B	600	-	-	0/29/52/52	0/3/3/3
2	698	A	600	-	-	0/29/52/52	0/3/3/3

All (5) bond length outliers are listed below:

Mol	Chain	Res	Type	Atoms	Z	Observed(Å)	Ideal(Å)
2	A	600	698	C17-C34	2.59	1.57	1.53
2	B	600	698	C17-C34	2.38	1.56	1.53
2	B	600	698	O36-C34	-2.13	1.22	1.30
2	A	600	698	O36-C34	-2.07	1.22	1.30
2	A	600	698	C15-C22	2.01	1.54	1.51

All (2) bond angle outliers are listed below:

Mol	Chain	Res	Type	Atoms	Z	Observed(°)	Ideal(°)
2	A	600	698	C7-C51-C2	-2.26	104.94	110.36
2	A	600	698	C9-C51-C2	2.01	115.17	110.36

There are no chirality outliers.

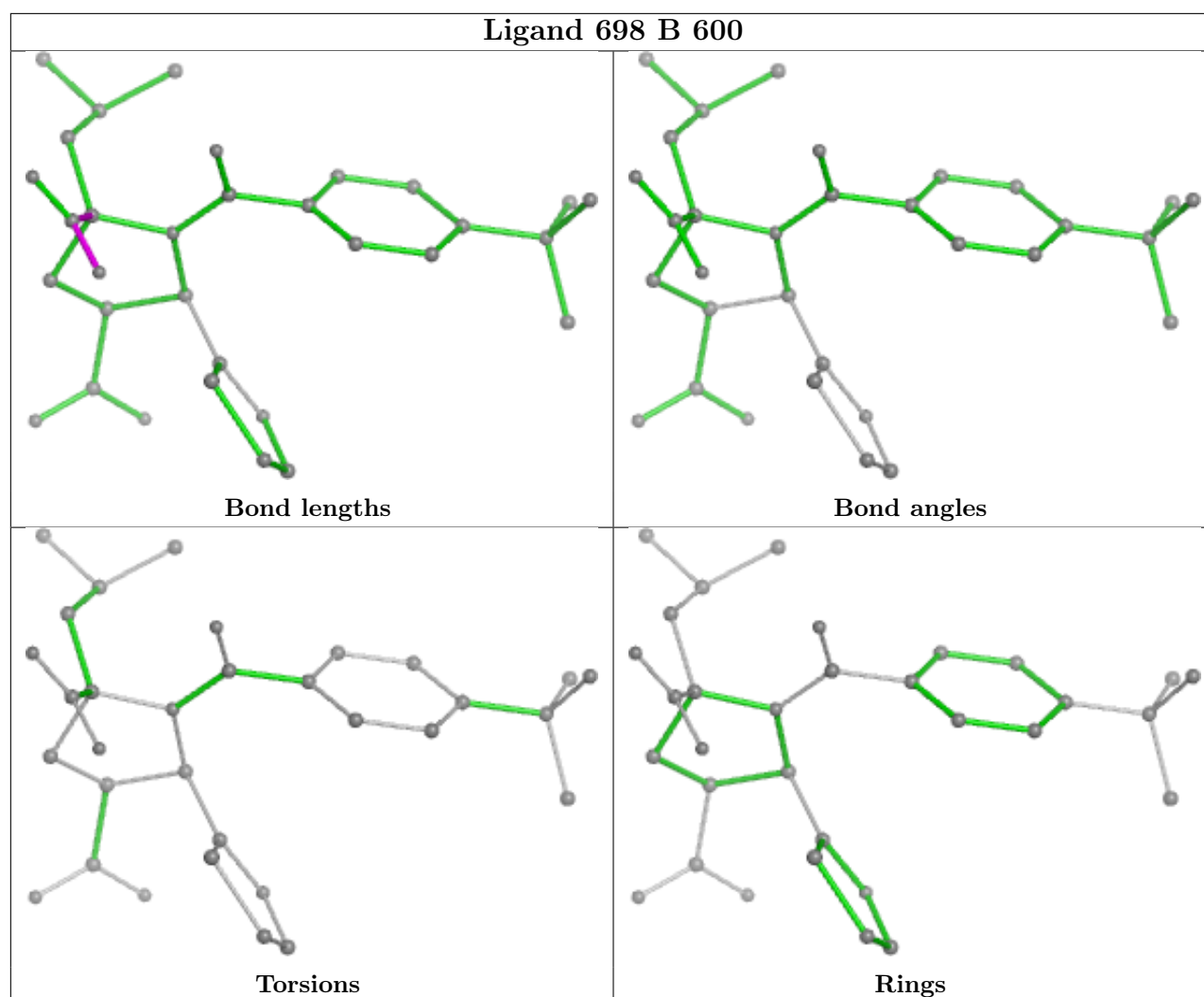
There are no torsion outliers.

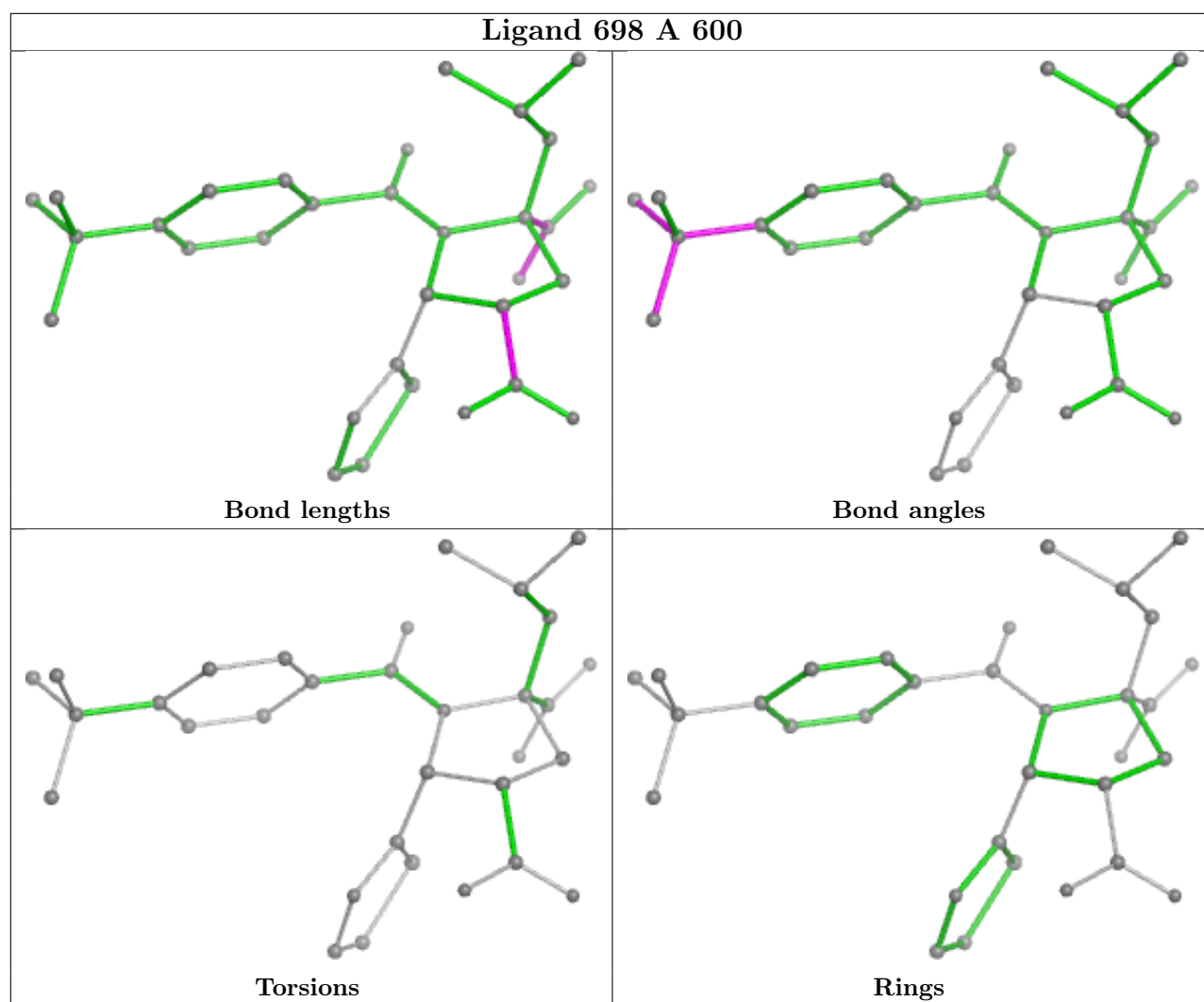
There are no ring outliers.

2 monomers are involved in 4 short contacts:

Mol	Chain	Res	Type	Clashes	Symm-Clashes
2	B	600	698	2	0
2	A	600	698	2	0

The following is a two-dimensional graphical depiction of Mogul quality analysis of bond lengths, bond angles, torsion angles, and ring geometry for all instances of the Ligand of Interest. In addition, ligands with molecular weight > 250 and outliers as shown on the validation Tables will also be included. For torsion angles, if less than 5% of the Mogul distribution of torsion angles is within 10 degrees of the torsion angle in question, then that torsion angle is considered an outlier. Any bond that is central to one or more torsion angles identified as an outlier by Mogul will be highlighted in the graph. For rings, the root-mean-square deviation (RMSD) between the ring in question and similar rings identified by Mogul is calculated over all ring torsion angles. If the average RMSD is greater than 60 degrees and the minimal RMSD between the ring in question and any Mogul-identified rings is also greater than 60 degrees, then that ring is considered an outlier. The outliers are highlighted in purple. The color gray indicates Mogul did not find sufficient equivalents in the CSD to analyse the geometry.





5.7 Other polymers [i](#)

There are no such residues in this entry.

5.8 Polymer linkage issues [i](#)

There are no chain breaks in this entry.

6 Fit of model and data

6.1 Protein, DNA and RNA chains

In the following table, the column labelled ‘#RSRZ> 2’ contains the number (and percentage) of RSRZ outliers, followed by percent RSRZ outliers for the chain as percentile scores relative to all X-ray entries and entries of similar resolution. The OWAB column contains the minimum, median, 95th percentile and maximum values of the occupancy-weighted average B-factor per residue. The column labelled ‘Q< 0.9’ lists the number of (and percentage) of residues with an average occupancy less than 0.9.

Mol	Chain	Analysed	<RSRZ>	#RSRZ>2	OWAB(Å ²)	Q<0.9
1	A	549/570 (96%)	0.20	19 (3%) 44 43	21, 30, 43, 63	0
1	B	545/570 (95%)	0.25	22 (4%) 38 37	23, 32, 44, 56	0
All	All	1094/1140 (95%)	0.22	41 (3%) 41 41	21, 31, 44, 63	0

All (41) RSRZ outliers are listed below:

Mol	Chain	Res	Type	RSRZ
1	A	535	LYS	5.1
1	B	532	THR	5.1
1	B	563	SER	4.8
1	B	16	ALA	4.4
1	A	540	PRO	4.3
1	A	539	ILE	4.2
1	A	534	LEU	4.1
1	A	550	TRP	4.0
1	A	376	ALA	3.9
1	B	531	LYS	3.9
1	B	352	ASP	3.6
1	A	16	ALA	3.6
1	A	562	HIS	3.5
1	A	516	GLY	3.4
1	A	541	ALA	3.4
1	B	15	ALA	3.1
1	B	425	LEU	3.0
1	A	309	GLN	3.0
1	B	421	ALA	2.8
1	A	212	LYS	2.7
1	A	155	LYS	2.6
1	A	532	THR	2.6
1	A	531	LYS	2.6
1	B	233	ILE	2.6

Continued on next page...

Continued from previous page...

Mol	Chain	Res	Type	RSRZ
1	B	377	SER	2.6
1	B	355	GLN	2.5
1	B	353	PRO	2.5
1	A	412	ILE	2.4
1	B	530	VAL	2.3
1	B	32	ARG	2.3
1	B	362	LEU	2.3
1	B	412	ILE	2.2
1	B	537	THR	2.2
1	B	562	HIS	2.2
1	B	550	TRP	2.2
1	B	416	ALA	2.2
1	A	525	LEU	2.1
1	B	281	ALA	2.1
1	A	148	GLN	2.1
1	B	148	GLN	2.1
1	A	110	ASN	2.0

6.2 Non-standard residues in protein, DNA, RNA chains [i](#)

There are no non-standard protein/DNA/RNA residues in this entry.

6.3 Carbohydrates [i](#)

There are no monosaccharides in this entry.

6.4 Ligands [i](#)

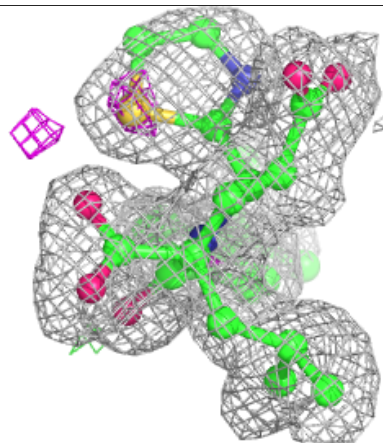
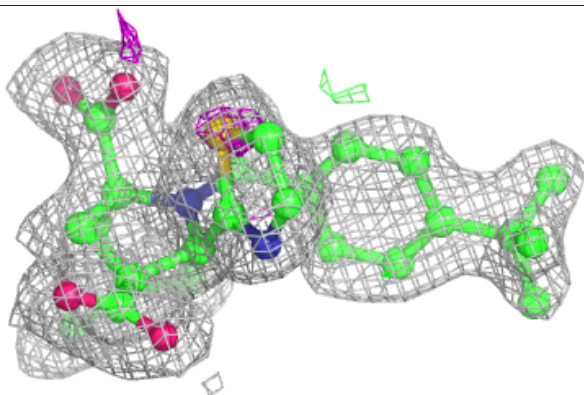
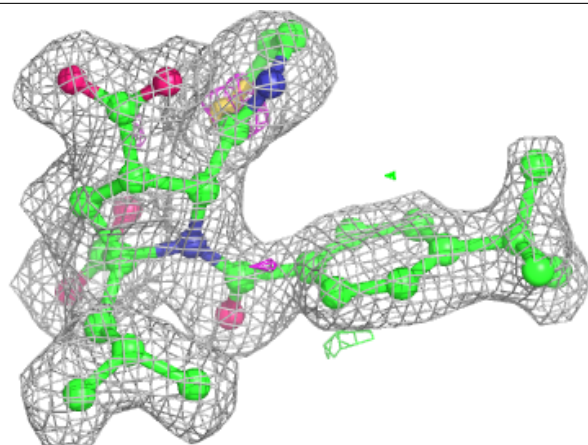
In the following table, the Atoms column lists the number of modelled atoms in the group and the number defined in the chemical component dictionary. The B-factors column lists the minimum, median, 95th percentile and maximum values of B factors of atoms in the group. The column labelled 'Q< 0.9' lists the number of atoms with occupancy less than 0.9.

Mol	Type	Chain	Res	Atoms	RSCC	RSR	B-factors(\AA^2)	Q<0.9
2	698	B	600	32/32	0.87	0.17	34,38,46,51	0
2	698	A	600	32/32	0.88	0.16	32,36,41,47	0

The following is a graphical depiction of the model fit to experimental electron density of all instances of the Ligand of Interest. In addition, ligands with molecular weight > 250 and outliers as shown on the geometry validation Tables will also be included. Each fit is shown from different orientation to approximate a three-dimensional view.

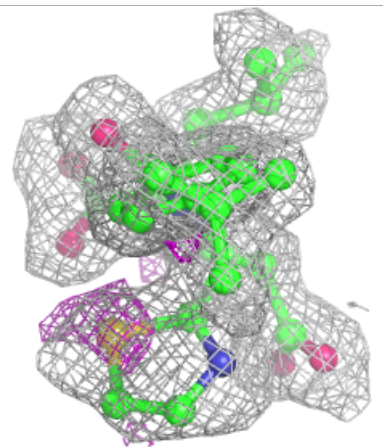
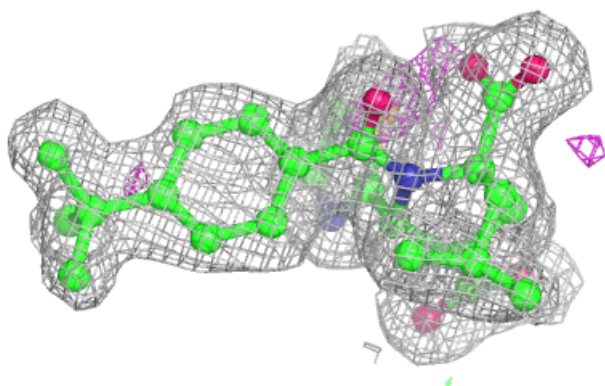
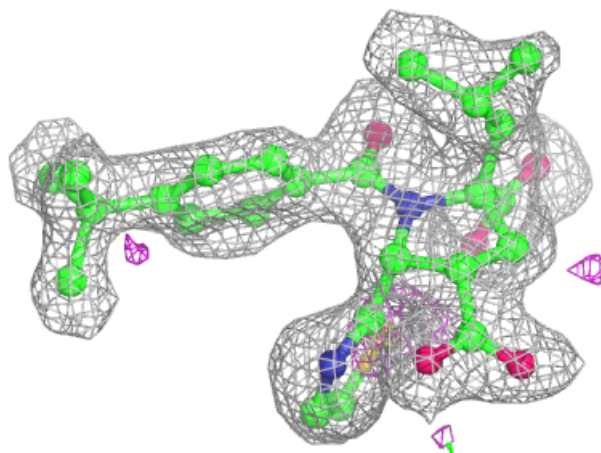
Electron density around 698 B 600:

$2mF_o-DF_c$ (at 0.7 rmsd) in gray
 mF_o-DF_c (at 3 rmsd) in purple (negative)
and green (positive)



Electron density around 698 A 600:

$2mF_o-DF_c$ (at 0.7 rmsd) in gray
 mF_o-DF_c (at 3 rmsd) in purple (negative)
and green (positive)



6.5 Other polymers [i](#)

There are no such residues in this entry.