



wwPDB NMR Structure Validation Summary Report ⓘ

Jun 6, 2023 – 07:55 pm BST

PDB ID : 6GE1
BMRB ID : 34265
Title : Solution structure of the r(UGGUGGU)4 RNA quadruplex
Authors : Andralojc, W.; Gdaniec, Z.
Deposited on : 2018-04-25

This is a wwPDB NMR Structure Validation Summary Report for a publicly released PDB entry.

We welcome your comments at validation@mail.wwpdb.org

A user guide is available at

<https://www.wwpdb.org/validation/2017/NMRValidationReportHelp>

with specific help available everywhere you see the ⓘ symbol.

The types of validation reports are described at

<http://www.wwpdb.org/validation/2017/FAQs#types>.

The following versions of software and data (see [references ⓘ](#)) were used in the production of this report:

MolProbity : 4.02b-467
Percentile statistics : 20191225.v01 (using entries in the PDB archive December 25th 2019)
wwPDB-RCI : v_1n_11_5_13_A (Berjanski et al., 2005)
PANAV : Wang et al. (2010)
wwPDB-ShiftChecker : v1.2
BMRB Restraints Analysis : v1.2
Ideal geometry (proteins) : Engh & Huber (2001)
Ideal geometry (DNA, RNA) : Parkinson et al. (1996)
Validation Pipeline (wwPDB-VP) : 2.33

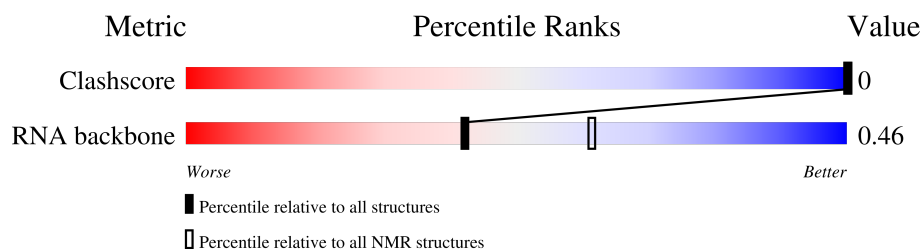
1 Overall quality at a glance

The following experimental techniques were used to determine the structure:

SOLUTION NMR

The overall completeness of chemical shifts assignment is 20%.

Percentile scores (ranging between 0-100) for global validation metrics of the entry are shown in the following graphic. The table shows the number of entries on which the scores are based.



Metric	Whole archive (#Entries)	NMR archive (#Entries)
Clashscore	158937	12864
RNA backbone	4643	676

The table below summarises the geometric issues observed across the polymeric chains and their fit to the experimental data. The red, orange, yellow and green segments indicate the fraction of residues that contain outliers for ≥ 3 , 2, 1 and 0 types of geometric quality criteria. A cyan segment indicates the fraction of residues that are not part of the well-defined cores, and a grey segment represents the fraction of residues that are not modelled. The numeric value for each fraction is indicated below the corresponding segment, with a dot representing fractions $\leq 5\%$

Mol	Chain	Length	Quality of chain
1	A	7	
1	B	7	
1	C	7	
1	D	7	

2 Ensemble composition and analysis ⓘ

This entry contains 15 models. This entry does not contain polypeptide chains, therefore identification of well-defined residues and clustering analysis are not possible. All residues are included in the validation scores.

3 Entry composition [i](#)

There is only 1 type of molecule in this entry. The entry contains 900 atoms, of which 304 are hydrogens and 0 are deuteriums.

- Molecule 1 is a RNA chain called RNA (5'-R(*UP*GP*GP*UP*GP*GP*U)-3').

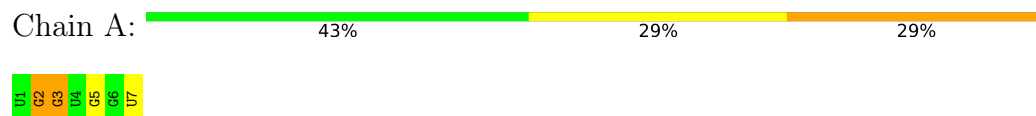
Mol	Chain	Residues	Atoms						Trace
1	A	7	Total	C	H	N	O	P	0
			225	67	76	26	50	6	
1	B	7	Total	C	H	N	O	P	0
			225	67	76	26	50	6	
1	C	7	Total	C	H	N	O	P	0
			225	67	76	26	50	6	
1	D	7	Total	C	H	N	O	P	0
			225	67	76	26	50	6	

4 Residue-property plots [i](#)

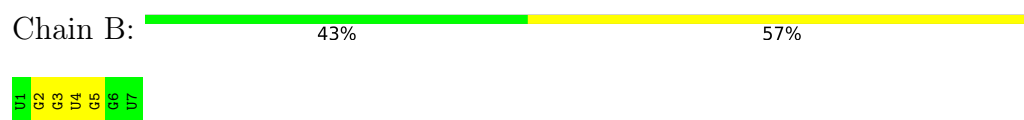
4.1 Average score per residue in the NMR ensemble

These plots are provided for all protein, RNA, DNA and oligosaccharide chains in the entry. The first graphic is the same as shown in the summary in section 1 of this report. The second graphic shows the sequence where residues are colour-coded according to the number of geometric quality criteria for which they contain at least one outlier: green = 0, yellow = 1, orange = 2 and red = 3 or more. Stretches of 2 or more consecutive residues without any outliers are shown as green connectors. Residues which are classified as ill-defined in the NMR ensemble, are shown in cyan with an underline colour-coded according to the previous scheme. Residues which were present in the experimental sample, but not modelled in the final structure are shown in grey.

- Molecule 1: RNA (5'-R(*UP*GP*GP*UP*GP*GP*U)-3')



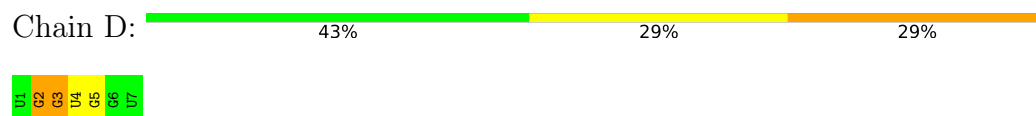
- Molecule 1: RNA (5'-R(*UP*GP*GP*UP*GP*GP*U)-3')



- Molecule 1: RNA (5'-R(*UP*GP*GP*UP*GP*GP*U)-3')



- Molecule 1: RNA (5'-R(*UP*GP*GP*UP*GP*GP*U)-3')



4.2 Residue scores for the representative (author defined) model from the NMR ensemble

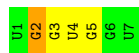
The representative model is number 1. Colouring as in section 4.1 above.

- Molecule 1: RNA (5'-R(*UP*GP*GP*UP*GP*GP*U)-3')





- Molecule 1: RNA (5'-R(*UP*GP*GP*UP*GP*GP*U)-3')



- Molecule 1: RNA (5'-R(*UP*GP*GP*UP*GP*GP*U)-3')



- Molecule 1: RNA (5'-R(*UP*GP*GP*UP*GP*GP*U)-3')



5 Refinement protocol and experimental data overview

The models were refined using the following method: *molecular dynamics, simulated annealing*.

Of the 400 calculated structures, 15 were deposited, based on the following criterion: *target function*.

The following table shows the software used for structure solution, optimisation and refinement.

Software name	Classification	Version
Amber	refinement	
Xplor-NIH	structure calculation	

The following table shows chemical shift validation statistics as aggregates over all chemical shift files. Detailed validation can be found in section 7 of this report.

Chemical shift file(s)	working_cs.cif
Number of chemical shift lists	3
Total number of shifts	220
Number of shifts mapped to atoms	219
Number of unparsed shifts	0
Number of shifts with mapping errors	1
Number of shifts with mapping warnings	0
Assignment completeness (well-defined parts)	20%

6 Model quality

6.1 Standard geometry

The Z score for a bond length (or angle) is the number of standard deviations the observed value is removed from the expected value. A bond length (or angle) with $|Z| > 5$ is considered an outlier worth inspection. RMSZ is the (average) root-mean-square of all Z scores of the bond lengths (or angles).

Mol	Chain	Bond lengths		Bond angles	
		RMSZ	#Z>5	RMSZ	#Z>5
1	A	1.34±0.02	0±0/166 (0.0± 0.0%)	1.93±0.06	2±1/258 (0.7± 0.5%)
1	B	1.35±0.02	0±0/166 (0.0± 0.0%)	1.93±0.05	2±1/258 (0.7± 0.4%)
1	C	1.34±0.02	0±0/166 (0.0± 0.0%)	1.91±0.04	2±1/258 (0.7± 0.4%)
1	D	1.34±0.02	0±0/166 (0.0± 0.0%)	1.93±0.04	2±1/258 (0.7± 0.4%)
All	All	1.34	0/9960 (0.0%)	1.93	111/15480 (0.7%)

Chiral center outliers are detected by calculating the chiral volume of a chiral center and verifying if the center is modelled as a planar moiety or with the opposite hand. A planarity outlier is detected by checking planarity of atoms in a peptide group, atoms in a mainchain group or atoms of a sidechain that are expected to be planar.

Mol	Chain	Chirality	Planarity
1	A	0.0±0.0	3.3±0.9
1	B	0.0±0.0	2.9±0.8
1	C	0.0±0.0	2.7±0.8
1	D	0.0±0.0	3.1±0.6
All	All	0	182

There are no bond-length outliers.

5 of 33 unique angle outliers are listed below. They are sorted according to the Z-score of the worst occurrence in the ensemble.

Mol	Chain	Res	Type	Atoms	Z	Observed(°)	Ideal(°)	Models	
								Worst	Total
1	A	2	G	O4'-C1'-N9	9.44	115.75	108.20	8	7
1	C	2	G	O4'-C1'-N9	8.60	115.08	108.20	10	8
1	B	2	G	O4'-C1'-N9	8.58	115.06	108.20	5	6
1	A	4	U	O4'-C1'-N1	7.48	114.19	108.20	8	5
1	D	7	U	O4'-C1'-N1	6.61	113.49	108.20	6	5

There are no chirality outliers.

5 of 25 unique planar outliers are listed below. They are sorted by the frequency of occurrence in the ensemble.

Mol	Chain	Res	Type	Group	Models (Total)
1	A	2	G	Sidechain	15
1	B	2	G	Sidechain	15
1	C	2	G	Sidechain	15
1	D	2	G	Sidechain	15
1	D	5	G	Sidechain	15

6.2 Too-close contacts [i](#)

In the following table, the Non-H and H(model) columns list the number of non-hydrogen atoms and hydrogen atoms in each chain respectively. The H(added) column lists the number of hydrogen atoms added and optimized by MolProbity. The Clashes column lists the number of clashes averaged over the ensemble.

Mol	Chain	Non-H	H(model)	H(added)	Clashes
All	All	8940	4560	4560	-

The all-atom clashscore is defined as the number of clashes found per 1000 atoms (including hydrogen atoms). The all-atom clashscore for this structure is -.

There are no clashes.

6.3 Torsion angles [i](#)

6.3.1 Protein backbone [i](#)

There are no protein molecules in this entry.

6.3.2 Protein sidechains [i](#)

There are no protein molecules in this entry.

6.3.3 RNA [i](#)

Mol	Chain	Analysed	Backbone Outliers	Pucker Outliers	Suiteness
1	A	6/7 (86%)	1±0 (14±8%)	0±0 (0±0%)	0.47±0.06
1	B	6/7 (86%)	1±1 (9±10%)	0±0 (0±0%)	0.47±0.10
1	C	6/7 (86%)	1±0 (11±8%)	0±0 (1±4%)	0.46±0.07
1	D	6/7 (86%)	1±0 (13±7%)	0±0 (0±0%)	0.45±0.07
All	All	360/420 (86%)	43 (12%)	1 (0%)	0.46

The overall RNA backbone suiteness is 0.46.

5 of 6 unique RNA backbone outliers are listed below:

Mol	Chain	Res	Type	Models (Total)
1	A	3	G	12
1	D	3	G	12
1	C	3	G	10
1	B	3	G	7
1	B	7	U	1

All unique RNA pucker outliers are listed below:

Mol	Chain	Res	Type	Models (Total)
1	C	2	G	1

6.4 Non-standard residues in protein, DNA, RNA chains [i](#)

There are no non-standard protein/DNA/RNA residues in this entry.

6.5 Carbohydrates [i](#)

There are no monosaccharides in this entry.

6.6 Ligand geometry [i](#)

There are no ligands in this entry.

6.7 Other polymers [i](#)

There are no such molecules in this entry.

6.8 Polymer linkage issues [i](#)

There are no chain breaks in this entry.

7 Chemical shift validation

The completeness of assignment taking into account all chemical shift lists is 20% for the well-defined parts and 20% for the entire structure.

7.1 Chemical shift list 1

File name: working_cs.cif

Chemical shift list name: *assigned_chem_shift_list_1*

7.1.1 Bookkeeping

The following table shows the results of parsing the chemical shift list and reports the number of nuclei with statistically unusual chemical shifts.

Total number of shifts	102
Number of shifts mapped to atoms	101
Number of unparsed shifts	0
Number of shifts with mapping errors	1
Number of shifts with mapping warnings	0
Number of shift outliers (ShiftChecker)	0

The following assigned chemical shifts were not mapped to the molecules present in the coordinate file.

- No matching atom found in the structure. All 1 occurrences are reported below.

List ID	Chain	Res	Type	Atom	Shift Data		
					Value	Uncertainty	Ambiguity
1	A	1	U	P	-1.237	0.05	1

7.1.2 Chemical shift referencing

No chemical shift referencing corrections were calculated (not enough data).

7.1.3 Completeness of resonance assignments

The following table shows the completeness of the chemical shift assignments for the well-defined regions of the structure. The overall completeness is 17%, i.e. 89 atoms were assigned a chemical shift out of a possible 524. 0 out of 0 assigned methyl groups (LEU and VAL) were assigned stereospecifically.

	Total	¹ H	¹³ C	¹⁵ N
Sugar	76/308 (25%)	41/168 (24%)	35/140 (25%)	0/0 (—%)
Base	13/216 (6%)	7/132 (5%)	6/40 (15%)	0/44 (0%)
Overall	89/524 (17%)	48/300 (16%)	41/180 (23%)	0/44 (0%)

7.1.4 Statistically unusual chemical shifts [i](#)

There are no statistically unusual chemical shifts.

7.1.5 Random Coil Index (RCI) plots [i](#)

No *random coil index*(RCI) plot could be generated from the current chemical shift list. RCI is only applicable to proteins

7.2 Chemical shift list 2

File name: working_cs.cif

Chemical shift list name: *NMRstar_5C_K_assigned_chem_shift_list_1*

7.2.1 Bookkeeping [i](#)

The following table shows the results of parsing the chemical shift list and reports the number of nuclei with statistically unusual chemical shifts.

Total number of shifts	67
Number of shifts mapped to atoms	67
Number of unparsed shifts	0
Number of shifts with mapping errors	0
Number of shifts with mapping warnings	0
Number of shift outliers (ShiftChecker)	0

7.2.2 Chemical shift referencing [i](#)

No chemical shift referencing corrections were calculated (not enough data).

7.2.3 Completeness of resonance assignments [i](#)

The following table shows the completeness of the chemical shift assignments for the well-defined regions of the structure. The overall completeness is 11%, i.e. 60 atoms were assigned a chemical shift out of a possible 524. 0 out of 0 assigned methyl groups (LEU and VAL) were assigned stereospecifically.

	Total	¹ H	¹³ C	¹⁵ N
Sugar	39/308 (13%)	39/168 (23%)	0/140 (0%)	0/0 (—%)
Base	21/216 (10%)	21/132 (16%)	0/40 (0%)	0/44 (0%)
Overall	60/524 (11%)	60/300 (20%)	0/180 (0%)	0/44 (0%)

7.2.4 Statistically unusual chemical shifts [i](#)

There are no statistically unusual chemical shifts.

7.2.5 Random Coil Index (RCI) plots [i](#)

No *random coil index*(RCI) plot could be generated from the current chemical shift list. RCI is only applicable to proteins

7.3 Chemical shift list 3

File name: working_cs.cif

Chemical shift list name: *NMRstar_25C_K_assigned_chem_shift_list_1*

7.3.1 Bookkeeping [i](#)

The following table shows the results of parsing the chemical shift list and reports the number of nuclei with statistically unusual chemical shifts.

Total number of shifts	51
Number of shifts mapped to atoms	51
Number of unparsed shifts	0
Number of shifts with mapping errors	0
Number of shifts with mapping warnings	0
Number of shift outliers (ShiftChecker)	0

7.3.2 Chemical shift referencing [i](#)

No chemical shift referencing corrections were calculated (not enough data).

7.3.3 Completeness of resonance assignments [i](#)

The following table shows the completeness of the chemical shift assignments for the well-defined regions of the structure. The overall completeness is 9%, i.e. 48 atoms were assigned a chemical shift out of a possible 524. 0 out of 0 assigned methyl groups (LEU and VAL) were assigned stereospecifically.

	Total	¹H	¹³C	¹⁵N
Sugar	41/308 (13%)	41/168 (24%)	0/140 (0%)	0/0 (—%)
Base	7/216 (3%)	7/132 (5%)	0/40 (0%)	0/44 (0%)
Overall	48/524 (9%)	48/300 (16%)	0/180 (0%)	0/44 (0%)

7.3.4 Statistically unusual chemical shifts ⓘ

There are no statistically unusual chemical shifts.

7.3.5 Random Coil Index (RCI) plots ⓘ

No *random coil index*(RCI) plot could be generated from the current chemical shift list. RCI is only applicable to proteins

8 NMR restraints analysis [i](#)

8.1 Conformationally restricting restraints [i](#)

The following table provides the summary of experimentally observed NMR restraints in different categories. Restraints are classified into different categories based on the sequence separation of the atoms involved.

Description	Value
Total distance restraints	160
Intra-residue ($ i-j =0$)	78
Sequential ($ i-j =1$)	79
Medium range ($ i-j >1$ and $ i-j <5$)	0
Long range ($ i-j \geq 5$)	0
Inter-chain	3
Hydrogen bond restraints	0
Disulfide bond restraints	0
Total dihedral-angle restraints	96
Number of unmapped restraints	0
Number of restraints per residue	9.1
Number of long range restraints per residue ¹	0.0

¹Long range hydrogen bonds and disulfide bonds are counted as long range restraints while calculating the number of long range restraints per residue

8.2 Residual restraint violations [i](#)

This section provides the overview of the restraint violations analysis. The violations are binned as small, medium and large violations based on its absolute value. Average number of violations per model is calculated by dividing the total number of violations in each bin by the size of the ensemble.

8.2.1 Average number of distance violations per model [i](#)

Distance violations less than 0.1 Å are not included in the calculation.

Bins (Å)	Average number of violations per model	Max (Å)
0.1-0.2 (Small)	6.7	0.2
0.2-0.5 (Medium)	8.0	0.5
>0.5 (Large)	4.5	4.83

8.2.2 Average number of dihedral-angle violations per model [i](#)

Dihedral-angle violations less than 1° are not included in the calculation.

Bins (°)	Average number of violations per model	Max (°)
1.0-10.0 (Small)	11.0	9.9
10.0-20.0 (Medium)	0.2	19.5
>20.0 (Large)	0.1	26.3

9 Distance violation analysis ⓘ

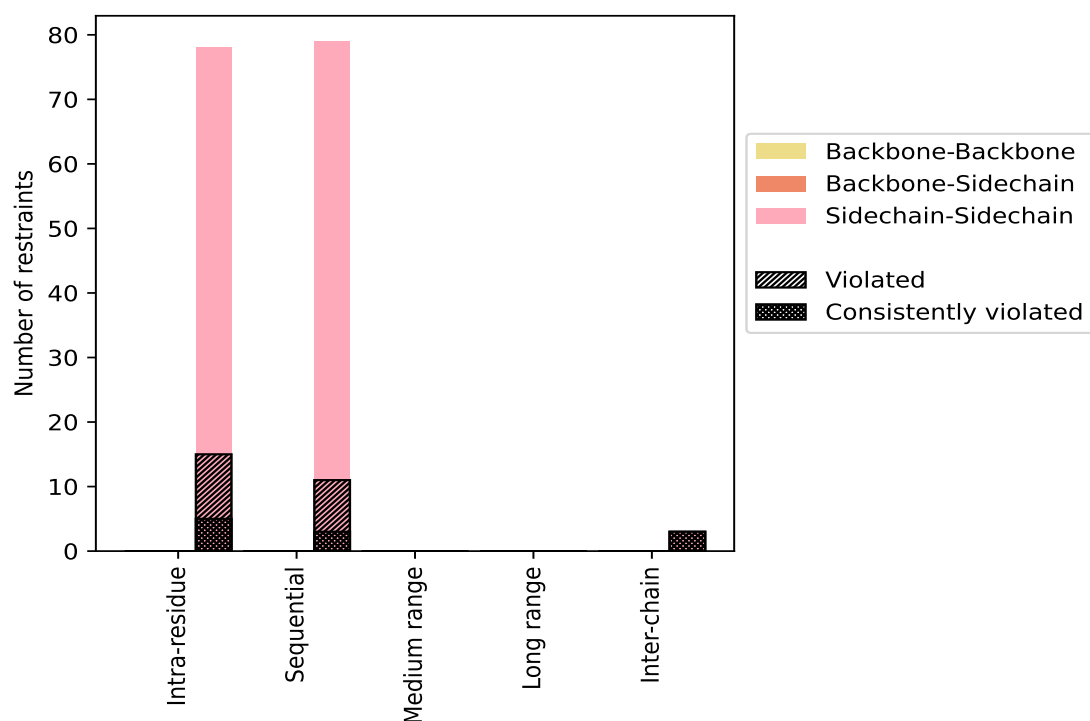
9.1 Summary of distance violations ⓘ

The following table shows the summary of distance violations in different restraint categories based on the sequence separation of the atoms involved. Each category is further sub-divided into three sub-categories based on the atoms involved. Violations less than 0.1 Å are not included in the statistics.

Restrains type	Count	% ¹	Violated ³			Consistently Violated ⁴		
			Count	% ²	% ¹	Count	% ²	% ¹
Intra-residue (i-j =0)	78	48.8	15	19.2	9.4	5	6.4	3.1
Backbone-Backbone	0	0.0	0	0.0	0.0	0	0.0	0.0
Backbone-Sidechain	0	0.0	0	0.0	0.0	0	0.0	0.0
Sidechain-Sidechain	78	48.8	15	19.2	9.4	5	6.4	3.1
Sequential (i-j =1)	79	49.4	11	13.9	6.9	3	3.8	1.9
Backbone-Backbone	0	0.0	0	0.0	0.0	0	0.0	0.0
Backbone-Sidechain	0	0.0	0	0.0	0.0	0	0.0	0.0
Sidechain-Sidechain	79	49.4	11	13.9	6.9	3	3.8	1.9
Medium range (i-j >1 & i-j <5)	0	0.0	0	0.0	0.0	0	0.0	0.0
Backbone-Backbone	0	0.0	0	0.0	0.0	0	0.0	0.0
Backbone-Sidechain	0	0.0	0	0.0	0.0	0	0.0	0.0
Sidechain-Sidechain	0	0.0	0	0.0	0.0	0	0.0	0.0
Long range (i-j ≥5)	0	0.0	0	0.0	0.0	0	0.0	0.0
Backbone-Backbone	0	0.0	0	0.0	0.0	0	0.0	0.0
Backbone-Sidechain	0	0.0	0	0.0	0.0	0	0.0	0.0
Sidechain-Sidechain	0	0.0	0	0.0	0.0	0	0.0	0.0
Inter-chain	3	1.9	3	100.0	1.9	3	100.0	1.9
Backbone-Backbone	0	0.0	0	0.0	0.0	0	0.0	0.0
Backbone-Sidechain	0	0.0	0	0.0	0.0	0	0.0	0.0
Sidechain-Sidechain	3	1.9	3	100.0	1.9	3	100.0	1.9
Hydrogen bond	0	0.0	0	0.0	0.0	0	0.0	0.0
Disulfide bond	0	0.0	0	0.0	0.0	0	0.0	0.0
Total	160	100.0	29	18.1	18.1	11	6.9	6.9
Backbone-Backbone	0	0.0	0	0.0	0.0	0	0.0	0.0
Backbone-Sidechain	0	0.0	0	0.0	0.0	0	0.0	0.0
Sidechain-Sidechain	160	100.0	29	18.1	18.1	11	6.9	6.9

¹ percentage calculated with respect to the total number of distance restraints, ² percentage calculated with respect to the number of restraints in a particular restraint category, ³ violated in at least one model, ⁴ violated in all the models

9.1.1 Bar chart : Distribution of distance restraints and violations [i](#)



Violated and consistently violated restraints are shown using different hatch patterns in their respective categories. The hydrogen bonds and disulfied bonds are counted in their appropriate category on the x-axis

9.2 Distance violation statistics for each model [i](#)

The following table provides the distance violation statistics for each model in the ensemble. Violations less than 0.1 Å are not included in the statistics.

Model ID	Number of violations						Mean (Å)	Max (Å)	SD ⁶ (Å)	Median (Å)
	IR ¹	SQ ²	MR ³	LR ⁴	IC ⁵	Total				
1	11	6	0	0	3	20	0.86	4.7	1.48	0.23
2	11	6	0	0	3	20	0.86	4.72	1.49	0.24
3	10	5	0	0	3	18	0.94	4.7	1.55	0.24
4	11	5	0	0	3	19	0.91	4.74	1.55	0.22
5	12	5	0	0	3	20	0.87	4.81	1.49	0.25
6	10	5	0	0	3	18	0.96	4.78	1.56	0.28
7	9	5	0	0	3	17	0.98	4.63	1.57	0.27
8	8	7	0	0	3	18	0.98	4.79	1.56	0.28
9	10	6	0	0	3	19	0.93	4.83	1.52	0.28
10	12	7	0	0	3	22	0.81	4.74	1.43	0.26
11	11	6	0	0	3	20	0.85	4.78	1.46	0.24

Continued on next page...

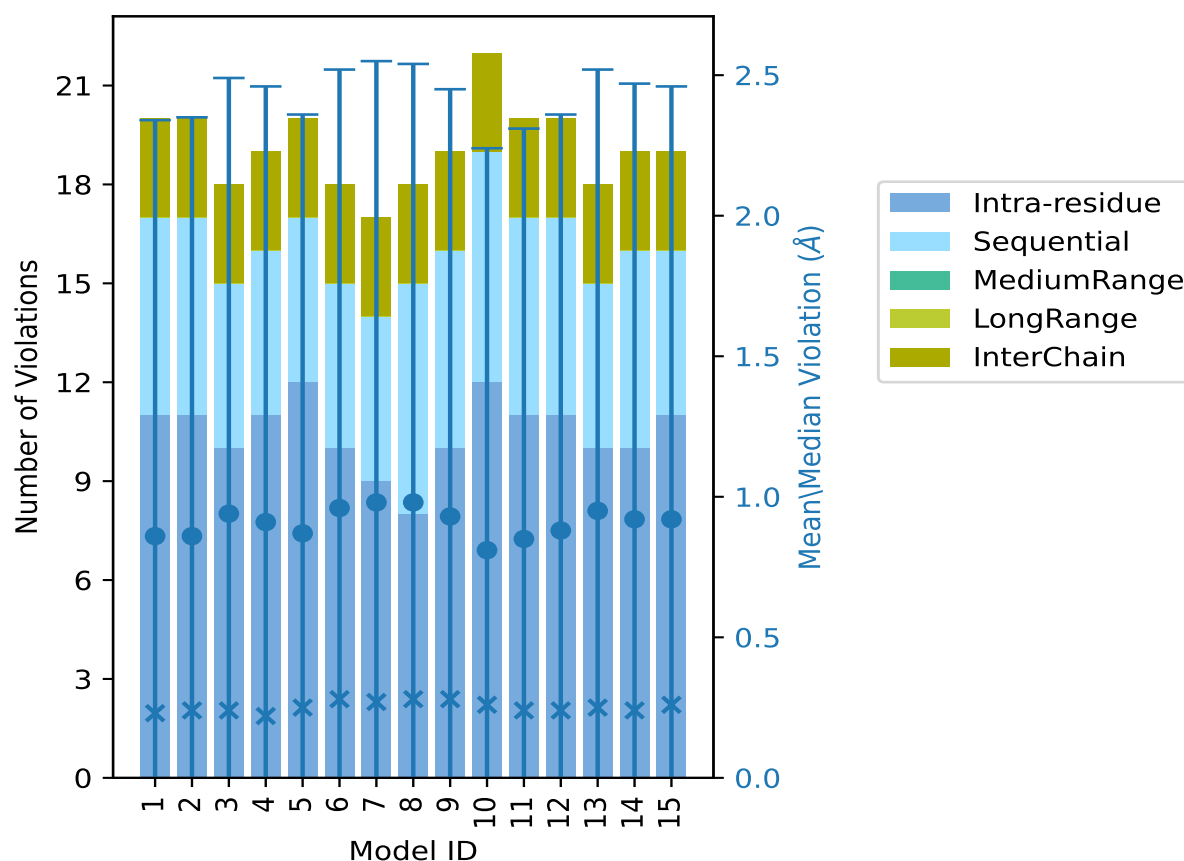
Continued from previous page...

Model ID	Number of violations						Mean (Å)	Max (Å)	SD ⁶ (Å)	Median (Å)
	IR ¹	SQ ²	MR ³	LR ⁴	IC ⁵	Total				
12	11	6	0	0	3	20	0.88	4.78	1.48	0.24
13	10	5	0	0	3	18	0.95	4.81	1.57	0.25
14	10	6	0	0	3	19	0.92	4.83	1.55	0.24
15	11	5	0	0	3	19	0.92	4.8	1.54	0.26

¹Intra-residue restraints, ²Sequential restraints, ³Medium range restraints, ⁴Long range restraints,

⁵Inter-chain restraints, ⁶Standard deviation

9.2.1 Bar graph : Distance Violation statistics for each model [i](#)



The mean(dot),median(x) and the standard deviation are shown in blue with respect to the y axis on the right

9.3 Distance violation statistics for the ensemble [i](#)

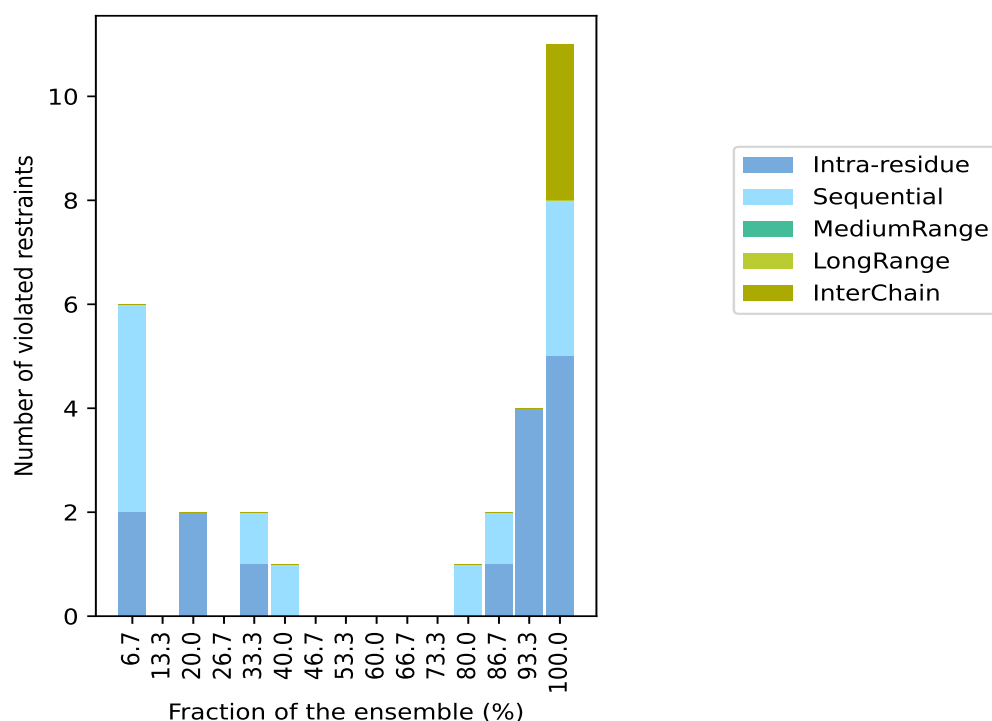
Violation analysis may find that some restraints are violated in few models and some are violated in most of models. The following table provides this information as number of violated restraints

for a given fraction of the ensemble. In total, 131(IR:63, SQ:68, MR:0, LR:0, IC:0) restraints are not violated in the ensemble.

Number of violated restraints						Fraction of the ensemble	
IR ¹	SQ ²	MR ³	LR ⁴	IC ⁵	Total	Count ⁶	%
2	4	0	0	0	6	1	6.7
0	0	0	0	0	0	2	13.3
2	0	0	0	0	2	3	20.0
0	0	0	0	0	0	4	26.7
1	1	0	0	0	2	5	33.3
0	1	0	0	0	1	6	40.0
0	0	0	0	0	0	7	46.7
0	0	0	0	0	0	8	53.3
0	0	0	0	0	0	9	60.0
0	0	0	0	0	0	10	66.7
0	0	0	0	0	0	11	73.3
0	1	0	0	0	1	12	80.0
1	1	0	0	0	2	13	86.7
4	0	0	0	0	4	14	93.3
5	3	0	0	3	11	15	100.0

¹Intra-residue restraints, ²Sequential restraints, ³Medium range restraints, ⁴Long range restraints, ⁵Inter-chain restraints, ⁶ Number of models with violations

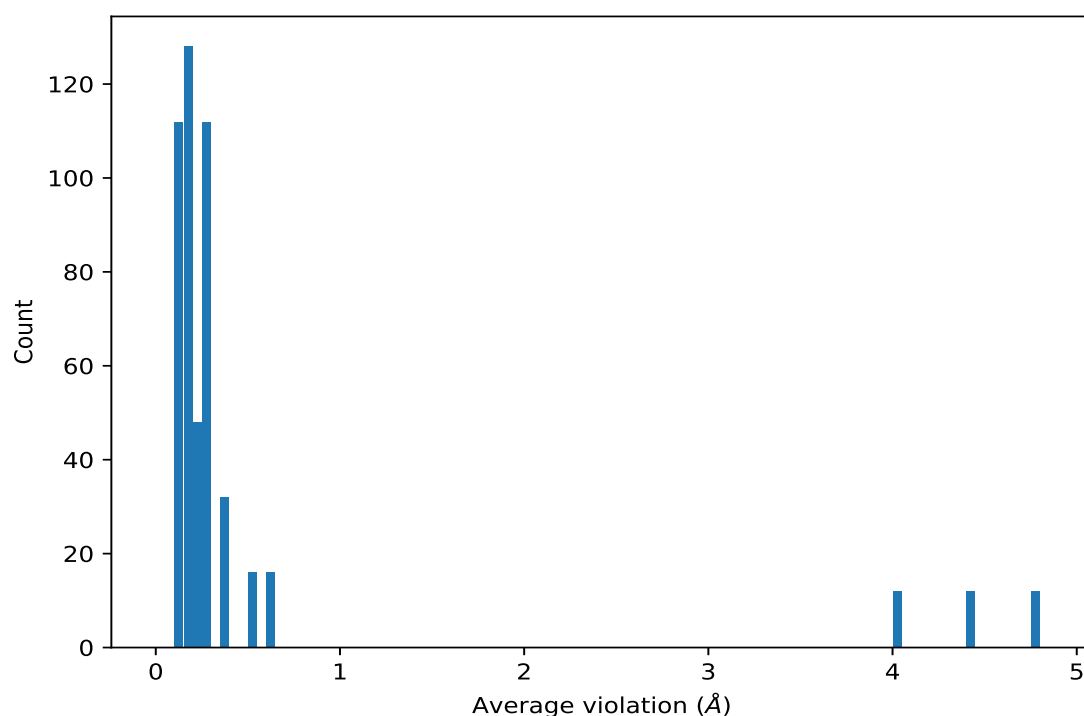
9.3.1 Bar graph : Distance violation statistics for the ensemble [i](#)



9.4 Most violated distance restraints in the ensemble [i](#)

9.4.1 Histogram : Distribution of mean distance violations [i](#)

The following histogram shows the distribution of the average value of the violation. The average is calculated for each restraint that is violated in more than one model over all the violated models in the ensemble



9.4.2 Table: Most violated distance restraints [i](#)

The following table provides the mean and the standard deviation of the violations for the 10 worst performing restraints, sorted by number of violated models and the mean violation value. The Key (restraint list ID, restraint ID) is the unique identifier for a given restraint. Rows with same key represent combinatorial or ambiguous restraints and are counted as a single restraint.

Key	Atom-1	Atom-2	Models ¹	Mean (Å)	SD ¹ (Å)	Median (Å)
(2,29)	1:A:5:G:H2'	1:B:5:G:H2'	15	4.76	0.05	4.78
(2,29)	1:A:5:G:H2'	1:C:5:G:H2'	15	4.76	0.05	4.78
(2,29)	1:A:5:G:H2'	1:D:5:G:H2'	15	4.76	0.05	4.78
(2,29)	1:B:5:G:H2'	1:A:5:G:H2'	15	4.76	0.05	4.78
(2,29)	1:B:5:G:H2'	1:C:5:G:H2'	15	4.76	0.05	4.78
(2,29)	1:B:5:G:H2'	1:D:5:G:H2'	15	4.76	0.05	4.78
(2,29)	1:C:5:G:H2'	1:A:5:G:H2'	15	4.76	0.05	4.78
(2,29)	1:C:5:G:H2'	1:B:5:G:H2'	15	4.76	0.05	4.78
(2,29)	1:C:5:G:H2'	1:D:5:G:H2'	15	4.76	0.05	4.78
(2,29)	1:D:5:G:H2'	1:A:5:G:H2'	15	4.76	0.05	4.78
(2,29)	1:D:5:G:H2'	1:B:5:G:H2'	15	4.76	0.05	4.78
(2,29)	1:D:5:G:H2'	1:C:5:G:H2'	15	4.76	0.05	4.78
(2,65)	1:A:7:U:H2'	1:B:7:U:H2'	15	4.41	0.06	4.43
(2,65)	1:A:7:U:H2'	1:C:7:U:H2'	15	4.41	0.06	4.43
(2,65)	1:A:7:U:H2'	1:D:7:U:H2'	15	4.41	0.06	4.43
(2,65)	1:B:7:U:H2'	1:A:7:U:H2'	15	4.41	0.06	4.43

Continued on next page...

Continued from previous page...

Key	Atom-1	Atom-2	Models ¹	Mean (Å)	SD ¹ (Å)	Median (Å)
(2,65)	1:B:7:U:H2'	1:C:7:U:H2'	15	4.41	0.06	4.43
(2,65)	1:B:7:U:H2'	1:D:7:U:H2'	15	4.41	0.06	4.43
(2,65)	1:C:7:U:H2'	1:A:7:U:H2'	15	4.41	0.06	4.43
(2,65)	1:C:7:U:H2'	1:B:7:U:H2'	15	4.41	0.06	4.43
(2,65)	1:C:7:U:H2'	1:D:7:U:H2'	15	4.41	0.06	4.43
(2,65)	1:D:7:U:H2'	1:A:7:U:H2'	15	4.41	0.06	4.43
(2,65)	1:D:7:U:H2'	1:B:7:U:H2'	15	4.41	0.06	4.43
(2,65)	1:D:7:U:H2'	1:C:7:U:H2'	15	4.41	0.06	4.43
(2,42)	1:A:6:G:H2'	1:B:6:G:H2'	15	4.04	0.12	4.05
(2,42)	1:A:6:G:H2'	1:C:6:G:H2'	15	4.04	0.12	4.05
(2,42)	1:A:6:G:H2'	1:D:6:G:H2'	15	4.04	0.12	4.05
(2,42)	1:B:6:G:H2'	1:A:6:G:H2'	15	4.04	0.12	4.05
(2,42)	1:B:6:G:H2'	1:C:6:G:H2'	15	4.04	0.12	4.05
(2,42)	1:B:6:G:H2'	1:D:6:G:H2'	15	4.04	0.12	4.05
(2,42)	1:C:6:G:H2'	1:A:6:G:H2'	15	4.04	0.12	4.05
(2,42)	1:C:6:G:H2'	1:B:6:G:H2'	15	4.04	0.12	4.05
(2,42)	1:C:6:G:H2'	1:D:6:G:H2'	15	4.04	0.12	4.05
(2,42)	1:D:6:G:H2'	1:A:6:G:H2'	15	4.04	0.12	4.05
(2,42)	1:D:6:G:H2'	1:B:6:G:H2'	15	4.04	0.12	4.05
(2,42)	1:D:6:G:H2'	1:C:6:G:H2'	15	4.04	0.12	4.05
(2,44)	1:A:6:G:H3'	1:A:6:G:H2'	15	0.6	0.01	0.6
(2,44)	1:A:6:G:H3'	1:B:6:G:H2'	15	0.6	0.01	0.6
(2,44)	1:A:6:G:H3'	1:C:6:G:H2'	15	0.6	0.01	0.6
(2,44)	1:A:6:G:H3'	1:D:6:G:H2'	15	0.6	0.01	0.6
(2,44)	1:B:6:G:H3'	1:A:6:G:H2'	15	0.6	0.01	0.6
(2,44)	1:B:6:G:H3'	1:B:6:G:H2'	15	0.6	0.01	0.6
(2,44)	1:B:6:G:H3'	1:C:6:G:H2'	15	0.6	0.01	0.6
(2,44)	1:B:6:G:H3'	1:D:6:G:H2'	15	0.6	0.01	0.6
(2,44)	1:C:6:G:H3'	1:A:6:G:H2'	15	0.6	0.01	0.6
(2,44)	1:C:6:G:H3'	1:B:6:G:H2'	15	0.6	0.01	0.6
(2,44)	1:C:6:G:H3'	1:C:6:G:H2'	15	0.6	0.01	0.6
(2,44)	1:C:6:G:H3'	1:D:6:G:H2'	15	0.6	0.01	0.6
(2,44)	1:D:6:G:H3'	1:A:6:G:H2'	15	0.6	0.01	0.6
(2,44)	1:D:6:G:H3'	1:B:6:G:H2'	15	0.6	0.01	0.6
(2,44)	1:D:6:G:H3'	1:C:6:G:H2'	15	0.6	0.01	0.6
(2,44)	1:D:6:G:H3'	1:D:6:G:H2'	15	0.6	0.01	0.6
(2,14)	1:A:2:G:H22	1:A:3:G:H1'	15	0.5	0.05	0.5
(2,14)	1:A:2:G:H22	1:B:3:G:H1'	15	0.5	0.05	0.5
(2,14)	1:A:2:G:H22	1:C:3:G:H1'	15	0.5	0.05	0.5
(2,14)	1:A:2:G:H22	1:D:3:G:H1'	15	0.5	0.05	0.5
(2,14)	1:B:2:G:H22	1:A:3:G:H1'	15	0.5	0.05	0.5
(2,14)	1:B:2:G:H22	1:B:3:G:H1'	15	0.5	0.05	0.5

Continued on next page...

Continued from previous page...

Key	Atom-1	Atom-2	Models ¹	Mean (Å)	SD ¹ (Å)	Median (Å)
(2,14)	1:B:2:G:H22	1:C:3:G:H1'	15	0.5	0.05	0.5
(2,14)	1:B:2:G:H22	1:D:3:G:H1'	15	0.5	0.05	0.5
(2,14)	1:C:2:G:H22	1:A:3:G:H1'	15	0.5	0.05	0.5
(2,14)	1:C:2:G:H22	1:B:3:G:H1'	15	0.5	0.05	0.5
(2,14)	1:C:2:G:H22	1:C:3:G:H1'	15	0.5	0.05	0.5
(2,14)	1:C:2:G:H22	1:D:3:G:H1'	15	0.5	0.05	0.5
(2,14)	1:D:2:G:H22	1:A:3:G:H1'	15	0.5	0.05	0.5
(2,14)	1:D:2:G:H22	1:B:3:G:H1'	15	0.5	0.05	0.5
(2,14)	1:D:2:G:H22	1:C:3:G:H1'	15	0.5	0.05	0.5
(2,14)	1:D:2:G:H22	1:D:3:G:H1'	15	0.5	0.05	0.5
(1,69)	1:A:2:G:H4'	1:A:2:G:H5''	15	0.27	0.01	0.27
(1,69)	1:A:2:G:H4'	1:B:2:G:H5''	15	0.27	0.01	0.27
(1,69)	1:A:2:G:H4'	1:C:2:G:H5''	15	0.27	0.01	0.27
(1,69)	1:A:2:G:H4'	1:D:2:G:H5''	15	0.27	0.01	0.27
(1,69)	1:B:2:G:H4'	1:A:2:G:H5''	15	0.27	0.01	0.27
(1,69)	1:B:2:G:H4'	1:B:2:G:H5''	15	0.27	0.01	0.27
(1,69)	1:B:2:G:H4'	1:C:2:G:H5''	15	0.27	0.01	0.27
(1,69)	1:B:2:G:H4'	1:D:2:G:H5''	15	0.27	0.01	0.27
(1,69)	1:C:2:G:H4'	1:A:2:G:H5''	15	0.27	0.01	0.27
(1,69)	1:C:2:G:H4'	1:B:2:G:H5''	15	0.27	0.01	0.27
(1,69)	1:C:2:G:H4'	1:C:2:G:H5''	15	0.27	0.01	0.27
(1,69)	1:C:2:G:H4'	1:D:2:G:H5''	15	0.27	0.01	0.27
(1,69)	1:D:2:G:H4'	1:A:2:G:H5''	15	0.27	0.01	0.27
(1,69)	1:D:2:G:H4'	1:B:2:G:H5''	15	0.27	0.01	0.27
(1,69)	1:D:2:G:H4'	1:C:2:G:H5''	15	0.27	0.01	0.27
(1,69)	1:D:2:G:H4'	1:D:2:G:H5''	15	0.27	0.01	0.27
(1,69)	1:A:2:G:H4'	1:A:2:G:H5'	15	0.27	0.01	0.27
(1,69)	1:A:2:G:H4'	1:B:2:G:H5'	15	0.27	0.01	0.27
(1,69)	1:A:2:G:H4'	1:C:2:G:H5'	15	0.27	0.01	0.27
(1,69)	1:A:2:G:H4'	1:D:2:G:H5'	15	0.27	0.01	0.27
(1,69)	1:B:2:G:H4'	1:A:2:G:H5'	15	0.27	0.01	0.27
(1,69)	1:B:2:G:H4'	1:B:2:G:H5'	15	0.27	0.01	0.27
(1,69)	1:B:2:G:H4'	1:C:2:G:H5'	15	0.27	0.01	0.27
(1,69)	1:B:2:G:H4'	1:D:2:G:H5'	15	0.27	0.01	0.27
(1,69)	1:C:2:G:H4'	1:A:2:G:H5'	15	0.27	0.01	0.27
(1,69)	1:C:2:G:H4'	1:B:2:G:H5'	15	0.27	0.01	0.27
(1,69)	1:C:2:G:H4'	1:C:2:G:H5'	15	0.27	0.01	0.27
(1,69)	1:C:2:G:H4'	1:D:2:G:H5'	15	0.27	0.01	0.27
(1,69)	1:D:2:G:H4'	1:A:2:G:H5'	15	0.27	0.01	0.27
(1,69)	1:D:2:G:H4'	1:B:2:G:H5'	15	0.27	0.01	0.27
(1,69)	1:D:2:G:H4'	1:C:2:G:H5'	15	0.27	0.01	0.27
(1,69)	1:D:2:G:H4'	1:D:2:G:H5'	15	0.27	0.01	0.27

Continued on next page...

Continued from previous page...

Key	Atom-1	Atom-2	Models ¹	Mean (Å)	SD ¹ (Å)	Median (Å)
(1,75)	1:A:6:G:H4'	1:A:6:G:H5''	15	0.27	0.0	0.27
(1,75)	1:A:6:G:H4'	1:B:6:G:H5''	15	0.27	0.0	0.27
(1,75)	1:A:6:G:H4'	1:C:6:G:H5''	15	0.27	0.0	0.27
(1,75)	1:A:6:G:H4'	1:D:6:G:H5''	15	0.27	0.0	0.27
(1,75)	1:B:6:G:H4'	1:A:6:G:H5''	15	0.27	0.0	0.27
(1,75)	1:B:6:G:H4'	1:B:6:G:H5''	15	0.27	0.0	0.27
(1,75)	1:B:6:G:H4'	1:C:6:G:H5''	15	0.27	0.0	0.27
(1,75)	1:B:6:G:H4'	1:D:6:G:H5''	15	0.27	0.0	0.27
(1,75)	1:C:6:G:H4'	1:A:6:G:H5''	15	0.27	0.0	0.27
(1,75)	1:C:6:G:H4'	1:B:6:G:H5''	15	0.27	0.0	0.27
(1,75)	1:C:6:G:H4'	1:C:6:G:H5''	15	0.27	0.0	0.27
(1,75)	1:C:6:G:H4'	1:D:6:G:H5''	15	0.27	0.0	0.27
(1,75)	1:D:6:G:H4'	1:A:6:G:H5''	15	0.27	0.0	0.27
(1,75)	1:D:6:G:H4'	1:B:6:G:H5''	15	0.27	0.0	0.27
(1,75)	1:D:6:G:H4'	1:C:6:G:H5''	15	0.27	0.0	0.27
(1,75)	1:D:6:G:H4'	1:D:6:G:H5''	15	0.27	0.0	0.27
(1,75)	1:A:6:G:H4'	1:A:6:G:H5'	15	0.27	0.0	0.27
(1,75)	1:A:6:G:H4'	1:B:6:G:H5'	15	0.27	0.0	0.27
(1,75)	1:A:6:G:H4'	1:C:6:G:H5'	15	0.27	0.0	0.27
(1,75)	1:A:6:G:H4'	1:D:6:G:H5'	15	0.27	0.0	0.27
(1,75)	1:B:6:G:H4'	1:A:6:G:H5'	15	0.27	0.0	0.27
(1,75)	1:B:6:G:H4'	1:B:6:G:H5'	15	0.27	0.0	0.27
(1,75)	1:B:6:G:H4'	1:C:6:G:H5'	15	0.27	0.0	0.27
(1,75)	1:B:6:G:H4'	1:D:6:G:H5'	15	0.27	0.0	0.27
(1,75)	1:C:6:G:H4'	1:A:6:G:H5'	15	0.27	0.0	0.27
(1,75)	1:C:6:G:H4'	1:B:6:G:H5'	15	0.27	0.0	0.27
(1,75)	1:C:6:G:H4'	1:C:6:G:H5'	15	0.27	0.0	0.27
(1,75)	1:C:6:G:H4'	1:D:6:G:H5'	15	0.27	0.0	0.27
(1,75)	1:D:6:G:H4'	1:A:6:G:H5'	15	0.27	0.0	0.27
(1,75)	1:D:6:G:H4'	1:B:6:G:H5'	15	0.27	0.0	0.27
(1,75)	1:D:6:G:H4'	1:C:6:G:H5'	15	0.27	0.0	0.27
(1,75)	1:D:6:G:H4'	1:D:6:G:H5'	15	0.27	0.0	0.27
(2,27)	1:A:4:U:H3	1:A:5:G:H1	15	0.26	0.03	0.26
(2,27)	1:A:4:U:H3	1:B:5:G:H1	15	0.26	0.03	0.26
(2,27)	1:A:4:U:H3	1:C:5:G:H1	15	0.26	0.03	0.26
(2,27)	1:A:4:U:H3	1:D:5:G:H1	15	0.26	0.03	0.26
(2,27)	1:B:4:U:H3	1:A:5:G:H1	15	0.26	0.03	0.26
(2,27)	1:B:4:U:H3	1:B:5:G:H1	15	0.26	0.03	0.26
(2,27)	1:B:4:U:H3	1:C:5:G:H1	15	0.26	0.03	0.26
(2,27)	1:B:4:U:H3	1:D:5:G:H1	15	0.26	0.03	0.26
(2,27)	1:C:4:U:H3	1:A:5:G:H1	15	0.26	0.03	0.26
(2,27)	1:C:4:U:H3	1:B:5:G:H1	15	0.26	0.03	0.26

Continued on next page...

Continued from previous page...

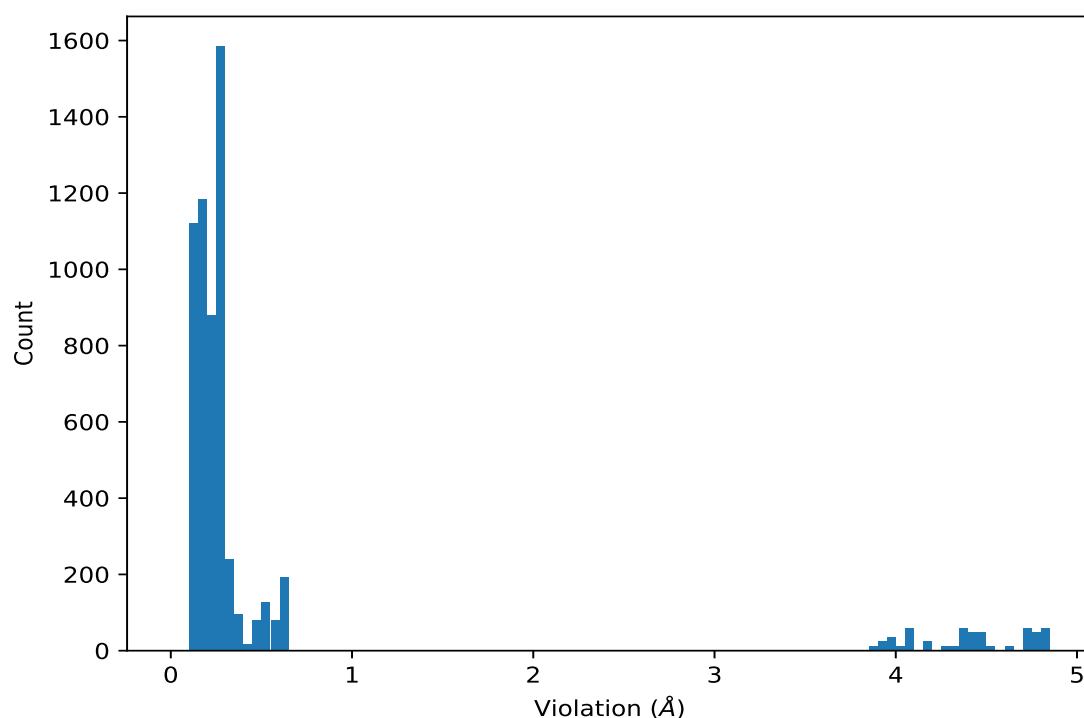
Key	Atom-1	Atom-2	Models ¹	Mean (Å)	SD ¹ (Å)	Median (Å)
(2,27)	1:C:4:U:H3	1:C:5:G:H1	15	0.26	0.03	0.26
(2,27)	1:C:4:U:H3	1:D:5:G:H1	15	0.26	0.03	0.26
(2,27)	1:D:4:U:H3	1:A:5:G:H1	15	0.26	0.03	0.26
(2,27)	1:D:4:U:H3	1:B:5:G:H1	15	0.26	0.03	0.26
(2,27)	1:D:4:U:H3	1:C:5:G:H1	15	0.26	0.03	0.26
(2,27)	1:D:4:U:H3	1:D:5:G:H1	15	0.26	0.03	0.26
(2,18)	1:A:3:G:H1	1:A:4:U:H3	15	0.25	0.04	0.24
(2,18)	1:A:3:G:H1	1:B:4:U:H3	15	0.25	0.04	0.24
(2,18)	1:A:3:G:H1	1:C:4:U:H3	15	0.25	0.04	0.24
(2,18)	1:A:3:G:H1	1:D:4:U:H3	15	0.25	0.04	0.24
(2,18)	1:B:3:G:H1	1:A:4:U:H3	15	0.25	0.04	0.24
(2,18)	1:B:3:G:H1	1:B:4:U:H3	15	0.25	0.04	0.24
(2,18)	1:B:3:G:H1	1:C:4:U:H3	15	0.25	0.04	0.24
(2,18)	1:B:3:G:H1	1:D:4:U:H3	15	0.25	0.04	0.24
(2,18)	1:C:3:G:H1	1:A:4:U:H3	15	0.25	0.04	0.24
(2,18)	1:C:3:G:H1	1:B:4:U:H3	15	0.25	0.04	0.24
(2,18)	1:C:3:G:H1	1:C:4:U:H3	15	0.25	0.04	0.24
(2,18)	1:C:3:G:H1	1:D:4:U:H3	15	0.25	0.04	0.24
(2,18)	1:D:3:G:H1	1:A:4:U:H3	15	0.25	0.04	0.24
(2,18)	1:D:3:G:H1	1:B:4:U:H3	15	0.25	0.04	0.24
(2,18)	1:D:3:G:H1	1:C:4:U:H3	15	0.25	0.04	0.24
(2,18)	1:D:3:G:H1	1:D:4:U:H3	15	0.25	0.04	0.24
(2,70)	1:A:7:U:H5'	1:A:7:U:H2'	15	0.24	0.04	0.23

¹Number of violated models, ²Standard deviation

9.5 All violated distance restraints [i](#)

9.5.1 Histogram : Distribution of distance violations [i](#)

The following histogram shows the distribution of the absolute value of the violation for all violated restraints in the ensemble.



9.5.2 Table : All distance violations [i](#)

The following table provides the 10 worst performing restraints, sorted by the violation value. The Key (restraint list ID, restraint ID) is the unique identifier for a given restraint. Rows with same key represent combinatorial or ambiguous restraints and are counted as a single restraint.

Key	Atom-1	Atom-2	Model ID	Violation (Å)
(2,29)	1:A:5:G:H2'	1:B:5:G:H2'	9	4.83
(2,29)	1:A:5:G:H2'	1:C:5:G:H2'	9	4.83
(2,29)	1:A:5:G:H2'	1:D:5:G:H2'	9	4.83
(2,29)	1:B:5:G:H2'	1:A:5:G:H2'	9	4.83
(2,29)	1:B:5:G:H2'	1:C:5:G:H2'	9	4.83
(2,29)	1:B:5:G:H2'	1:D:5:G:H2'	9	4.83
(2,29)	1:C:5:G:H2'	1:A:5:G:H2'	9	4.83
(2,29)	1:C:5:G:H2'	1:B:5:G:H2'	9	4.83
(2,29)	1:C:5:G:H2'	1:D:5:G:H2'	9	4.83
(2,29)	1:D:5:G:H2'	1:A:5:G:H2'	9	4.83
(2,29)	1:D:5:G:H2'	1:B:5:G:H2'	9	4.83
(2,29)	1:D:5:G:H2'	1:C:5:G:H2'	9	4.83
(2,29)	1:A:5:G:H2'	1:B:5:G:H2'	14	4.83
(2,29)	1:A:5:G:H2'	1:C:5:G:H2'	14	4.83
(2,29)	1:A:5:G:H2'	1:D:5:G:H2'	14	4.83
(2,29)	1:B:5:G:H2'	1:A:5:G:H2'	14	4.83
(2,29)	1:B:5:G:H2'	1:C:5:G:H2'	14	4.83

Continued on next page...

Continued from previous page...

Key	Atom-1	Atom-2	Model ID	Violation (Å)
(2,29)	1:B:5:G:H2'	1:D:5:G:H2'	14	4.83
(2,29)	1:C:5:G:H2'	1:A:5:G:H2'	14	4.83
(2,29)	1:C:5:G:H2'	1:B:5:G:H2'	14	4.83
(2,29)	1:C:5:G:H2'	1:D:5:G:H2'	14	4.83
(2,29)	1:D:5:G:H2'	1:A:5:G:H2'	14	4.83
(2,29)	1:D:5:G:H2'	1:B:5:G:H2'	14	4.83
(2,29)	1:D:5:G:H2'	1:C:5:G:H2'	14	4.83
(2,29)	1:A:5:G:H2'	1:B:5:G:H2'	5	4.81
(2,29)	1:A:5:G:H2'	1:C:5:G:H2'	5	4.81
(2,29)	1:A:5:G:H2'	1:D:5:G:H2'	5	4.81
(2,29)	1:B:5:G:H2'	1:A:5:G:H2'	5	4.81
(2,29)	1:B:5:G:H2'	1:C:5:G:H2'	5	4.81
(2,29)	1:B:5:G:H2'	1:D:5:G:H2'	5	4.81
(2,29)	1:C:5:G:H2'	1:A:5:G:H2'	5	4.81
(2,29)	1:C:5:G:H2'	1:B:5:G:H2'	5	4.81
(2,29)	1:C:5:G:H2'	1:D:5:G:H2'	5	4.81
(2,29)	1:D:5:G:H2'	1:A:5:G:H2'	5	4.81
(2,29)	1:D:5:G:H2'	1:B:5:G:H2'	5	4.81
(2,29)	1:D:5:G:H2'	1:C:5:G:H2'	5	4.81
(2,29)	1:A:5:G:H2'	1:B:5:G:H2'	13	4.81
(2,29)	1:A:5:G:H2'	1:C:5:G:H2'	13	4.81
(2,29)	1:A:5:G:H2'	1:D:5:G:H2'	13	4.81
(2,29)	1:B:5:G:H2'	1:A:5:G:H2'	13	4.81
(2,29)	1:B:5:G:H2'	1:C:5:G:H2'	13	4.81
(2,29)	1:B:5:G:H2'	1:D:5:G:H2'	13	4.81
(2,29)	1:C:5:G:H2'	1:A:5:G:H2'	13	4.81
(2,29)	1:C:5:G:H2'	1:B:5:G:H2'	13	4.81
(2,29)	1:C:5:G:H2'	1:D:5:G:H2'	13	4.81
(2,29)	1:D:5:G:H2'	1:A:5:G:H2'	13	4.81
(2,29)	1:D:5:G:H2'	1:B:5:G:H2'	13	4.81
(2,29)	1:D:5:G:H2'	1:C:5:G:H2'	13	4.81
(2,29)	1:A:5:G:H2'	1:B:5:G:H2'	15	4.8
(2,29)	1:A:5:G:H2'	1:C:5:G:H2'	15	4.8
(2,29)	1:A:5:G:H2'	1:D:5:G:H2'	15	4.8
(2,29)	1:B:5:G:H2'	1:A:5:G:H2'	15	4.8
(2,29)	1:B:5:G:H2'	1:C:5:G:H2'	15	4.8
(2,29)	1:B:5:G:H2'	1:D:5:G:H2'	15	4.8
(2,29)	1:C:5:G:H2'	1:A:5:G:H2'	15	4.8
(2,29)	1:C:5:G:H2'	1:B:5:G:H2'	15	4.8
(2,29)	1:C:5:G:H2'	1:D:5:G:H2'	15	4.8
(2,29)	1:D:5:G:H2'	1:A:5:G:H2'	15	4.8
(2,29)	1:D:5:G:H2'	1:B:5:G:H2'	15	4.8

Continued on next page...

Continued from previous page...

Key	Atom-1	Atom-2	Model ID	Violation (Å)
(2,29)	1:D:5:G:H2'	1:C:5:G:H2'	15	4.8
(2,29)	1:A:5:G:H2'	1:B:5:G:H2'	8	4.79
(2,29)	1:A:5:G:H2'	1:C:5:G:H2'	8	4.79
(2,29)	1:A:5:G:H2'	1:D:5:G:H2'	8	4.79
(2,29)	1:B:5:G:H2'	1:A:5:G:H2'	8	4.79
(2,29)	1:B:5:G:H2'	1:C:5:G:H2'	8	4.79
(2,29)	1:B:5:G:H2'	1:D:5:G:H2'	8	4.79
(2,29)	1:C:5:G:H2'	1:A:5:G:H2'	8	4.79
(2,29)	1:C:5:G:H2'	1:B:5:G:H2'	8	4.79
(2,29)	1:C:5:G:H2'	1:D:5:G:H2'	8	4.79
(2,29)	1:D:5:G:H2'	1:A:5:G:H2'	8	4.79
(2,29)	1:D:5:G:H2'	1:B:5:G:H2'	8	4.79
(2,29)	1:D:5:G:H2'	1:C:5:G:H2'	8	4.79
(2,29)	1:A:5:G:H2'	1:B:5:G:H2'	6	4.78
(2,29)	1:A:5:G:H2'	1:C:5:G:H2'	6	4.78
(2,29)	1:A:5:G:H2'	1:D:5:G:H2'	6	4.78
(2,29)	1:B:5:G:H2'	1:A:5:G:H2'	6	4.78
(2,29)	1:B:5:G:H2'	1:C:5:G:H2'	6	4.78
(2,29)	1:B:5:G:H2'	1:D:5:G:H2'	6	4.78
(2,29)	1:C:5:G:H2'	1:A:5:G:H2'	6	4.78
(2,29)	1:C:5:G:H2'	1:B:5:G:H2'	6	4.78
(2,29)	1:C:5:G:H2'	1:D:5:G:H2'	6	4.78
(2,29)	1:D:5:G:H2'	1:A:5:G:H2'	6	4.78
(2,29)	1:D:5:G:H2'	1:B:5:G:H2'	6	4.78
(2,29)	1:D:5:G:H2'	1:C:5:G:H2'	6	4.78
(2,29)	1:A:5:G:H2'	1:B:5:G:H2'	11	4.78
(2,29)	1:A:5:G:H2'	1:C:5:G:H2'	11	4.78
(2,29)	1:A:5:G:H2'	1:D:5:G:H2'	11	4.78
(2,29)	1:B:5:G:H2'	1:A:5:G:H2'	11	4.78
(2,29)	1:B:5:G:H2'	1:C:5:G:H2'	11	4.78
(2,29)	1:B:5:G:H2'	1:D:5:G:H2'	11	4.78
(2,29)	1:C:5:G:H2'	1:A:5:G:H2'	11	4.78
(2,29)	1:C:5:G:H2'	1:B:5:G:H2'	11	4.78
(2,29)	1:C:5:G:H2'	1:D:5:G:H2'	11	4.78
(2,29)	1:D:5:G:H2'	1:A:5:G:H2'	11	4.78
(2,29)	1:D:5:G:H2'	1:B:5:G:H2'	11	4.78
(2,29)	1:D:5:G:H2'	1:C:5:G:H2'	11	4.78
(2,29)	1:A:5:G:H2'	1:B:5:G:H2'	12	4.78
(2,29)	1:A:5:G:H2'	1:C:5:G:H2'	12	4.78
(2,29)	1:A:5:G:H2'	1:D:5:G:H2'	12	4.78
(2,29)	1:B:5:G:H2'	1:A:5:G:H2'	12	4.78
(2,29)	1:B:5:G:H2'	1:C:5:G:H2'	12	4.78

Continued on next page...

Continued from previous page...

Key	Atom-1	Atom-2	Model ID	Violation (Å)
(2,29)	1:B:5:G:H2'	1:D:5:G:H2'	12	4.78
(2,29)	1:C:5:G:H2'	1:A:5:G:H2'	12	4.78
(2,29)	1:C:5:G:H2'	1:B:5:G:H2'	12	4.78
(2,29)	1:C:5:G:H2'	1:D:5:G:H2'	12	4.78
(2,29)	1:D:5:G:H2'	1:A:5:G:H2'	12	4.78
(2,29)	1:D:5:G:H2'	1:B:5:G:H2'	12	4.78
(2,29)	1:D:5:G:H2'	1:C:5:G:H2'	12	4.78
(2,29)	1:A:5:G:H2'	1:B:5:G:H2'	4	4.74

10 Dihedral-angle violation analysis [i](#)

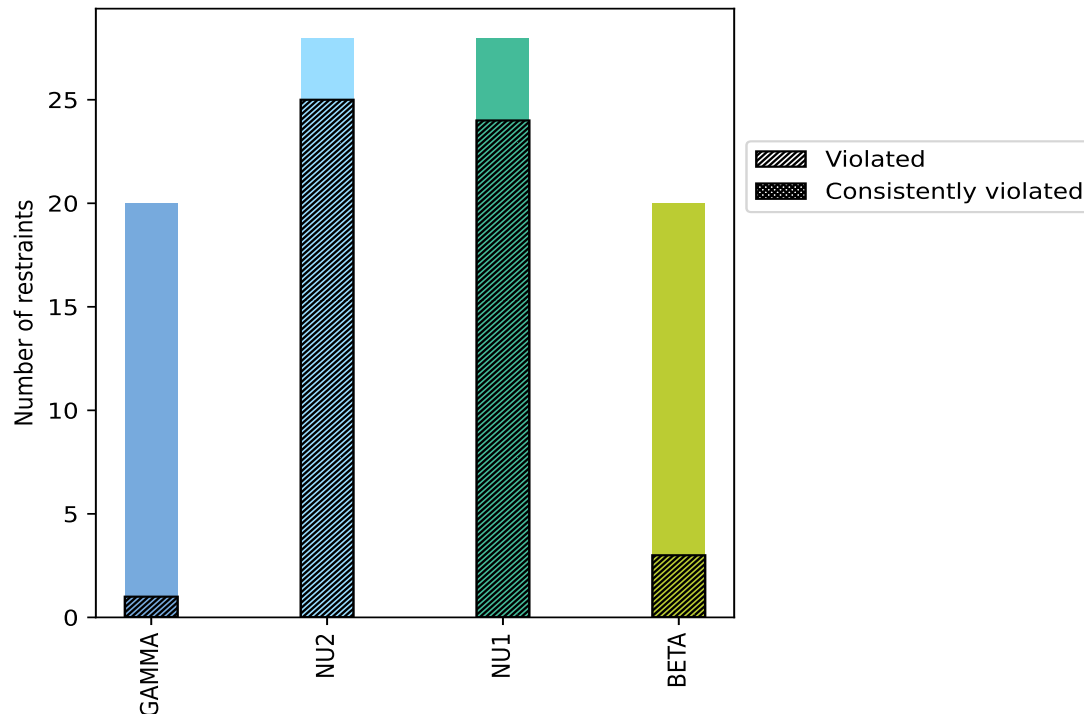
10.1 Summary of dihedral-angle violations [i](#)

The following table provides the summary of dihedral-angle violations in different dihedral-angle types. Violations less than 1° are not included in the calculation.

Angle type	Count	% ¹	Violated ³			Consistently Violated ⁴		
			Count	% ²	% ¹	Count	% ²	% ¹
GAMMA	20	20.8	1	5.0	1.0	0	0.0	0.0
NU2	28	29.2	25	89.3	26.0	0	0.0	0.0
NU1	28	29.2	24	85.7	25.0	0	0.0	0.0
BETA	20	20.8	3	15.0	3.1	0	0.0	0.0
Total	96	100.0	53	55.2	55.2	0	0.0	0.0

¹ percentage calculated with respect to total number of dihedral-angle restraints, ² percentage calculated with respect to number of restraints in a particular dihedral-angle type, ³ violated in at least one model, ⁴ violated in all the models

10.1.1 Bar chart : Distribution of dihedral-angles and violations [i](#)



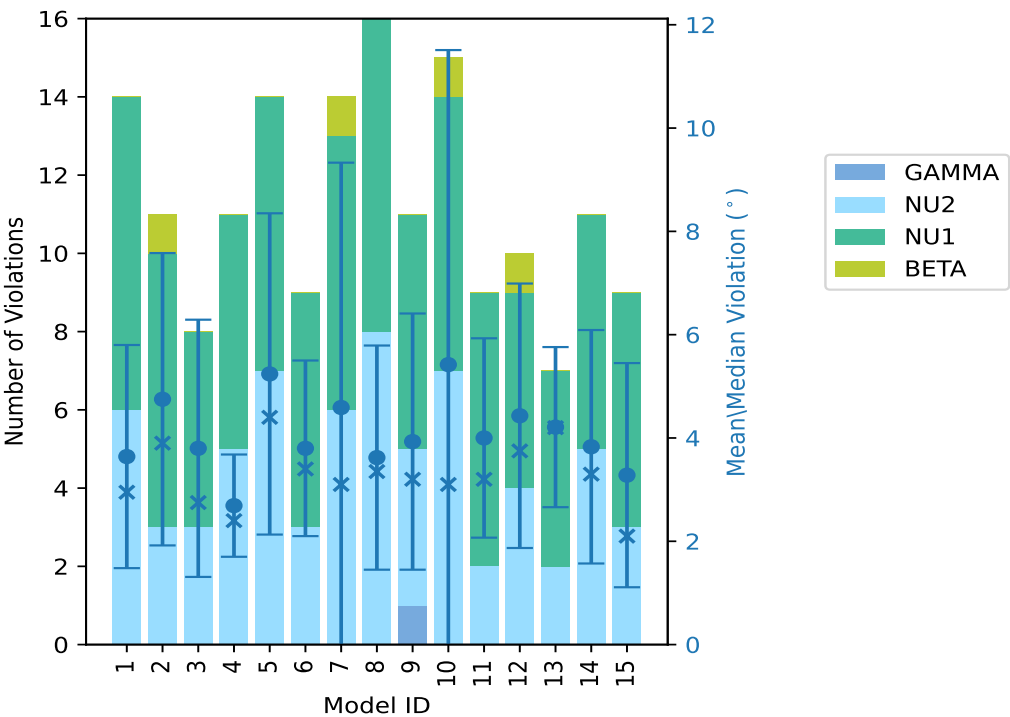
Violated and consistently violated restraints are shown using different hatch patterns in their respective categories

10.2 Dihedral-angle violation statistics for each model ⓘ

The following table provides the dihedral-angle violation statistics for each model in the ensemble. Violations less than 1° are not included in the statistics.

Model ID	Number of violations					Mean (°)	Max (°)	SD (°)	Median (°)
	GAMMA	NU2	NU1	BETA	Total				
1	0	6	8	0	14	3.64	7.2	2.16	2.95
2	0	3	7	1	11	4.75	9.9	2.83	3.9
3	0	3	5	0	8	3.8	7.7	2.49	2.75
4	0	5	6	0	11	2.69	4.9	0.99	2.4
5	0	7	7	0	14	5.24	11.5	3.11	4.4
6	0	3	6	0	9	3.8	8.1	1.7	3.4
7	0	6	7	1	14	4.59	19.5	4.74	3.1
8	0	8	8	0	16	3.62	9.7	2.17	3.35
9	1	4	6	0	11	3.93	9.2	2.48	3.2
10	0	7	7	1	15	5.42	26.3	6.09	3.1
11	0	2	7	0	9	4.0	7.0	1.93	3.2
12	0	4	5	1	10	4.43	9.4	2.56	3.75
13	0	2	5	0	7	4.21	6.4	1.55	4.2
14	0	5	6	0	11	3.83	9.2	2.26	3.3
15	0	3	6	0	9	3.28	7.8	2.17	2.1

10.2.1 Bar graph : Dihedral violation statistics for each model ⓘ



The mean(dot),median(x) and the standard deviation are shown in blue with respect to the y axis on the right

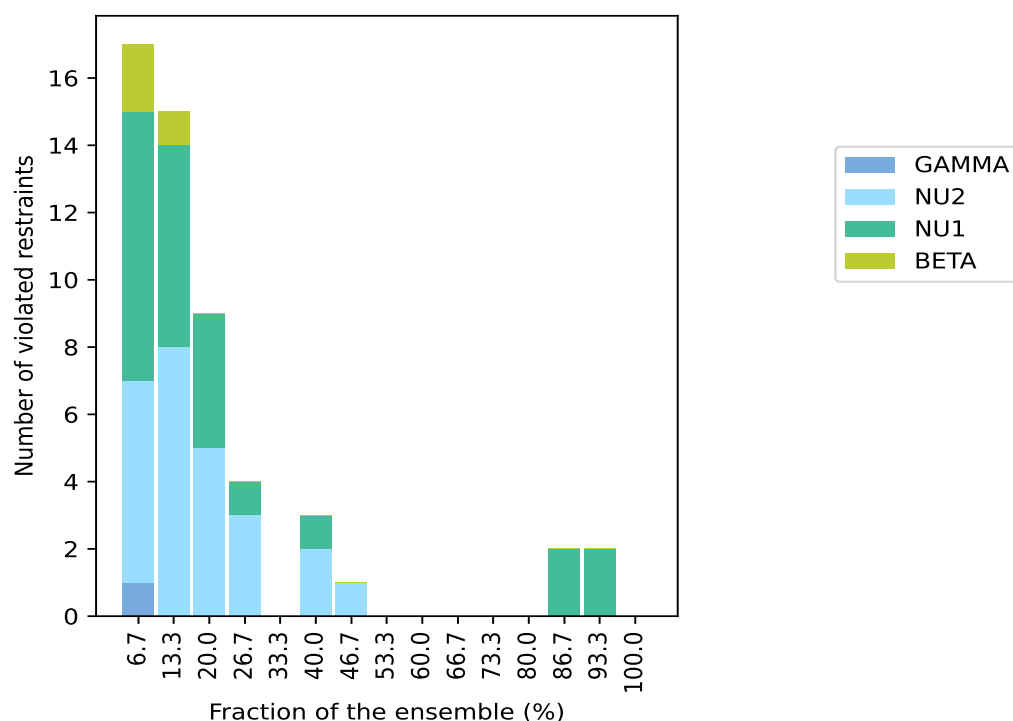
10.3 Dihedral-angle violation statistics for the ensemble [i](#)

Violation analysis may find that some restraints are violated in very few models and some are violated in most of models. The following table provides this information as number of violated restraints for a given fraction of ensemble.

Number of violated restraints					Fraction of the ensemble	
GAMMA	NU2	NU1	BETA	Total	Count ¹	%
1	6	8	2	17	1	6.7
0	8	6	1	15	2	13.3
0	5	4	0	9	3	20.0
0	3	1	0	4	4	26.7
0	0	0	0	0	5	33.3
0	2	1	0	3	6	40.0
0	1	0	0	1	7	46.7
0	0	0	0	0	8	53.3
0	0	0	0	0	9	60.0
0	0	0	0	0	10	66.7
0	0	0	0	0	11	73.3
0	0	0	0	0	12	80.0
0	0	2	0	2	13	86.7
0	0	2	0	2	14	93.3
0	0	0	0	0	15	100.0

¹ Number of models with violations

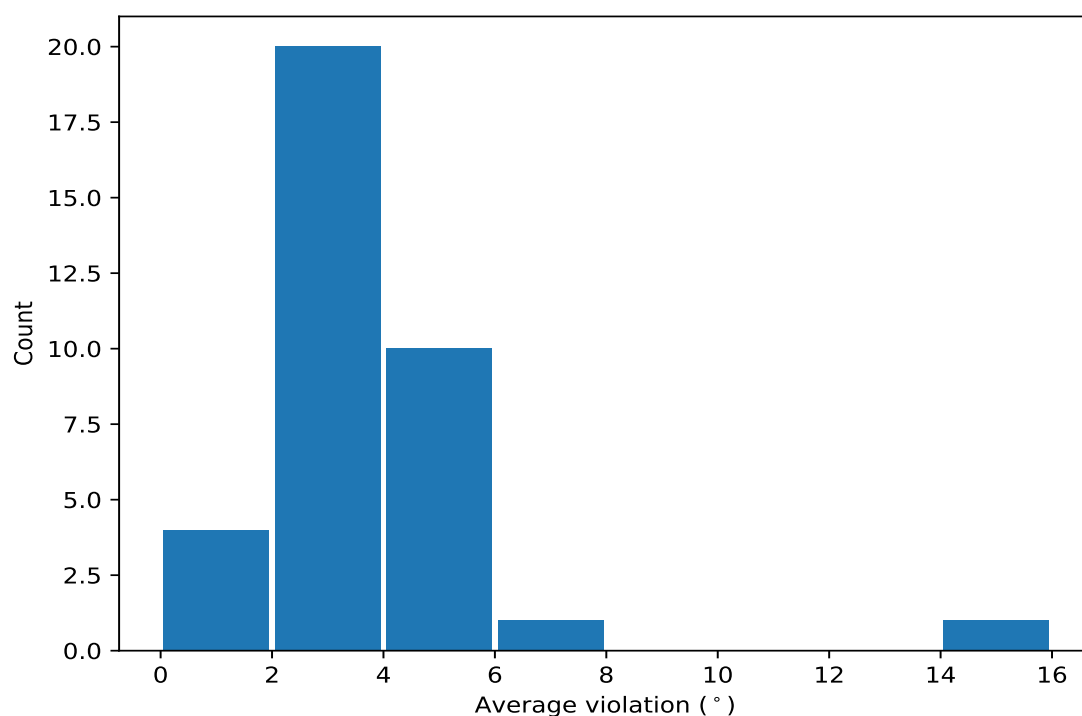
10.3.1 Bar graph : Dihedral-angle Violation statistics for the ensemble [i](#)



10.4 Most violated dihedral-angle restraints in the ensemble [i](#)

10.4.1 Histogram : Distribution of mean dihedral-angle violations [i](#)

The following histogram shows the distribution of the average value of the violation. The average is calculated for each restraint that is violated in more than one model over all the violated models in the ensemble



10.4.2 Table: Most violated dihedral-angle restraints [i](#)

The following table provides the mean and the standard deviation of the violations for the 10 worst performing restraints, sorted by number of violated models and the mean violation value. The Key (restraint list ID, restraint ID) is the unique identifier for a given restraint.

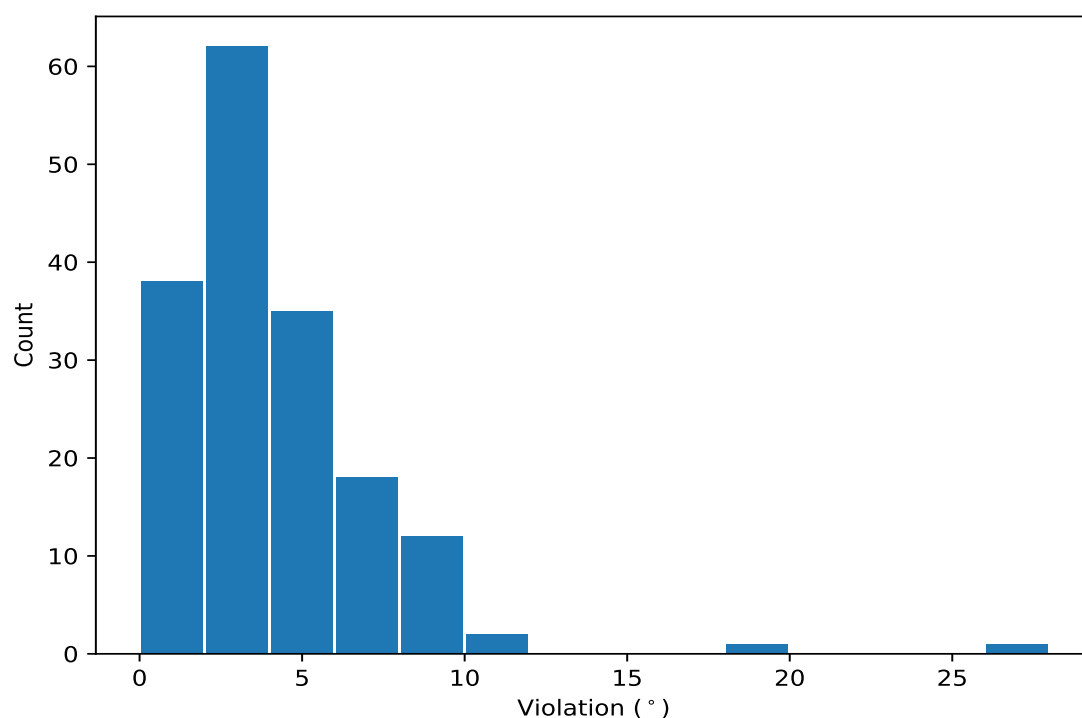
Key	Atom-1	Atom-2	Atom-3	Atom-4	Models ¹	Mean	SD ²	Median
(1,19)	1:C:3:G:O4'	1:C:3:G:C1'	1:C:3:G:C2'	1:C:3:G:C3'	14	5.07	2.42	5.05
(1,17)	1:A:3:G:O4'	1:A:3:G:C1'	1:A:3:G:C2'	1:A:3:G:C3'	14	5.03	1.99	4.85
(1,20)	1:D:3:G:O4'	1:D:3:G:C1'	1:D:3:G:C2'	1:D:3:G:C3'	13	6.29	2.83	6.5
(1,18)	1:B:3:G:O4'	1:B:3:G:C1'	1:B:3:G:C2'	1:B:3:G:C3'	13	5.15	2.8	4.2
(1,31)	1:C:4:U:C1'	1:C:4:U:C2'	1:C:4:U:C3'	1:C:4:U:C4'	7	4.11	1.91	3.4
(1,32)	1:D:4:U:C1'	1:D:4:U:C2'	1:D:4:U:C3'	1:D:4:U:C4'	6	4.97	1.54	4.5
(1,30)	1:B:4:U:C1'	1:B:4:U:C2'	1:B:4:U:C3'	1:B:4:U:C4'	6	2.98	1.2	2.8
(1,1)	1:A:1:U:O4'	1:A:1:U:C1'	1:A:1:U:C2'	1:A:1:U:C3'	6	2.47	1.16	2.05
(1,56)	1:D:7:U:C1'	1:D:7:U:C2'	1:D:7:U:C3'	1:D:7:U:C4'	4	4.12	2.14	3.95
(1,29)	1:A:4:U:C1'	1:A:4:U:C2'	1:A:4:U:C3'	1:A:4:U:C4'	4	3.58	2.57	2.4

¹ Number of violated models, ²Standard deviation, All angle values are in degree (°)

10.5 All violated dihedral-angle restraints [i](#)

10.5.1 Histogram : Distribution of violations [i](#)

The following histogram shows the distribution of the absolute value of the violation for all violated restraints in the ensemble.



10.5.2 Table: All violated dihedral-angle restraints [i](#)

The following table provides the list of violations for the 10 worst performing restraints, sorted by the violation value. The Key (restraint list ID, restraint ID) is the unique identifier for a given restraint.

Key	Atom-1	Atom-2	Atom-3	Atom-4	Model ID	Violation (°)
(1,76)	1:D:7:U:P	1:D:7:U:O5'	1:D:7:U:C5'	1:D:7:U:C4'	10	26.3
(1,75)	1:C:7:U:P	1:C:7:U:O5'	1:C:7:U:C5'	1:C:7:U:C4'	7	19.5
(1,18)	1:B:3:G:O4'	1:B:3:G:C1'	1:B:3:G:C2'	1:B:3:G:C3'	5	11.5
(1,20)	1:D:3:G:O4'	1:D:3:G:C1'	1:D:3:G:C2'	1:D:3:G:C3'	5	11.0
(1,75)	1:C:7:U:P	1:C:7:U:O5'	1:C:7:U:C5'	1:C:7:U:C4'	2	9.9
(1,7)	1:C:1:U:C1'	1:C:1:U:C2'	1:C:1:U:C3'	1:C:1:U:C4'	8	9.7
(1,17)	1:A:3:G:O4'	1:A:3:G:C1'	1:A:3:G:C2'	1:A:3:G:C3'	10	9.6
(1,5)	1:A:1:U:C1'	1:A:1:U:C2'	1:A:1:U:C3'	1:A:1:U:C4'	5	9.5
(1,20)	1:D:3:G:O4'	1:D:3:G:C1'	1:D:3:G:C2'	1:D:3:G:C3'	12	9.4
(1,19)	1:C:3:G:O4'	1:C:3:G:C1'	1:C:3:G:C2'	1:C:3:G:C3'	9	9.2